

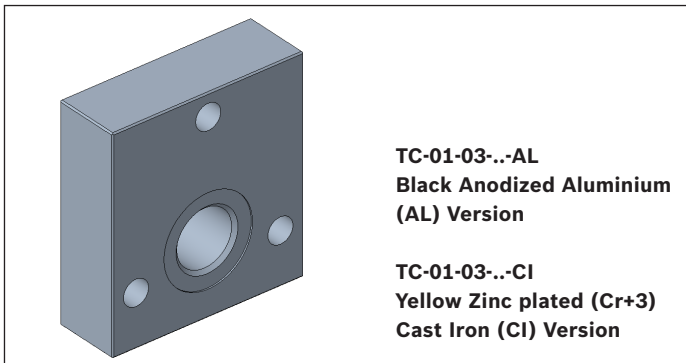
## Outlet Elements additional tank port T1

TC-01-\_\_-

**RE 18301-71**

Edition: 05.2024

Replaces: 06.2020



### Description

The outlet elements TC-01-\_\_ are employed to connect the P and T channels of the ED elements of the Directional Valve Assembly, and to provide an extra tank port T1, either size G 3/8 or G 1/2.

The TC-01-\_\_ elements are available with body made of Black Anodized Aluminium (Al).

### Technical data

General		
Weight	kg (lbs)	0.16 (0.35)
TC-01-02-...-AL-F.. element		
Weight	kg (lbs)	0.26 (0.56)
TC-01-03-...-AL element		
Weight	kg (lbs)	0.64 (1.41)
TC-01-03-...-CI element		
Ambient Temperature	°C (°F)	-20....+50 (-4....+122) (NBR seals)
Hydraulic		
Maximum flow in T	l/min (gpm)	50 (13.2)
Maximum pressure for aluminium version (AL)	bar (psi)	250 (3625)
Maximum pressure for Cast Iron version (CI)	bar (psi)	310 (4500)
Hydraulic fluid	Mineral oil based hydraulic fluids HL (DIN 51524 part 1).	
General properties: it must have physical lubricating and chemical properties suitable for use in hydraulic systems such as, for example:	Mineral oil based hydraulic fluids HLP (DIN 51524 part 2).	
	For use of environmentally acceptable fluids (vegetable or polyglycol base) please consult us.	
Fluid Temperature	°C (°F)	-20....+100 (-4....+212) (NBR)
Permissible degree of fluid contamination	ISO 4572: $\beta_{x \geq 75} X = 12 \dots 15$ ISO 4406: class 20/18/15 NAS 1638: class 9	
Viscosity range	mm <sup>2</sup> /s	5....420

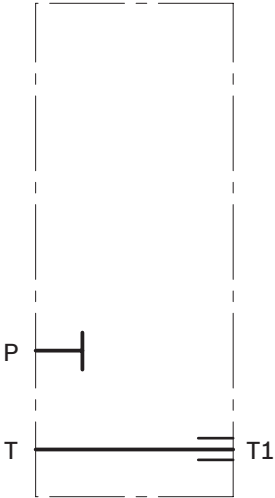
### Note

For applications with different specifications consult us

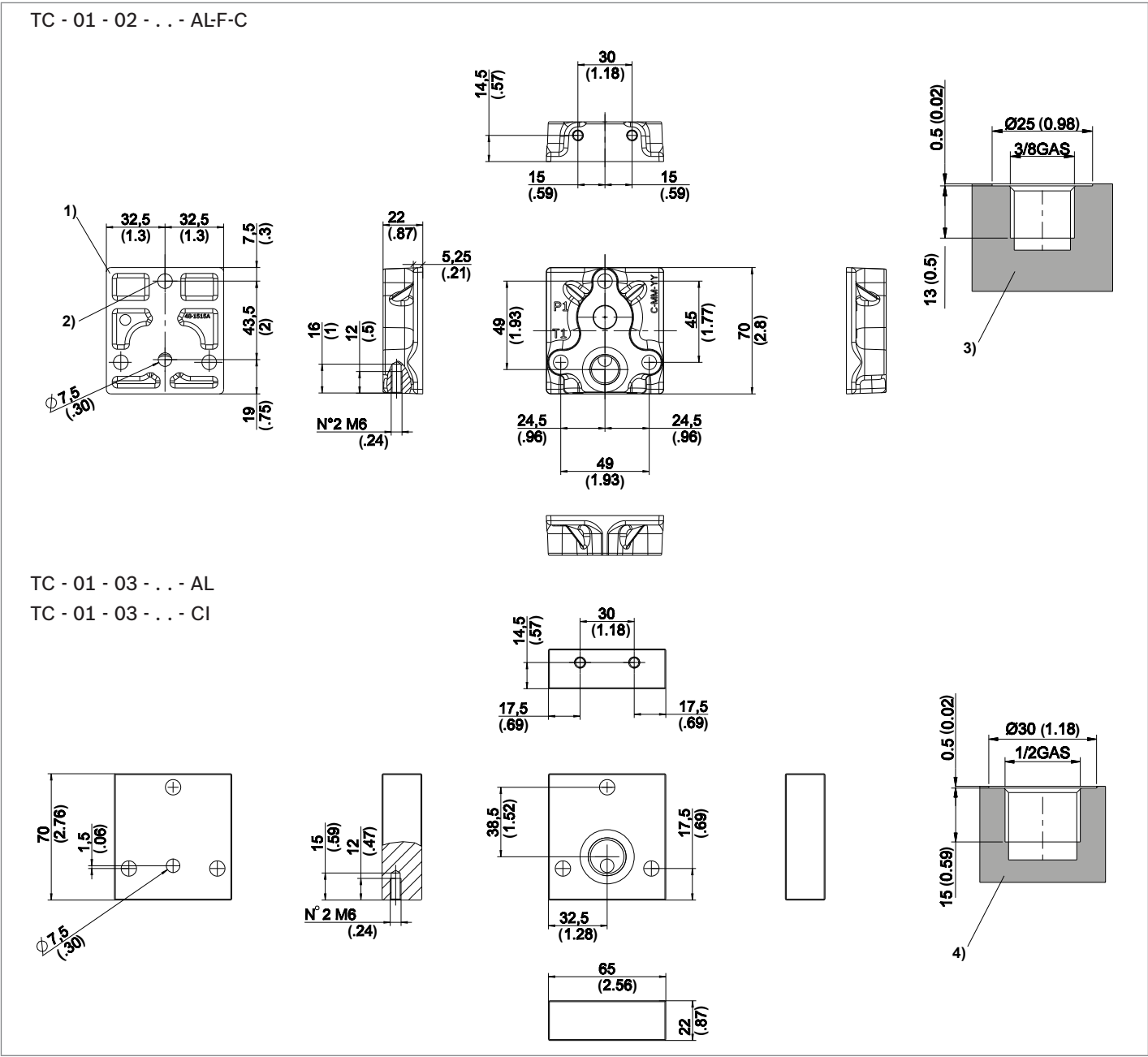
Ordering details

01	02	03	04					
TC	-	01	-		-	00	-	
Family								
01	Outlet Elements							TC
Configuration								
02	with additional tank port T1							01
Ports								
03	G 3/8 DIN 3852							02
	G 1/2 DIN 3852							03
	3/4-16 UNF 2-B (SAE8)							56
Material								
04	Forged Aluminum (only for G 3/8 port size)							AL-F-C
	Forged Aluminum (only for SAE8 port size)							AL-F-F
	Aluminum from solid bar (only for G 1/2 port size)							AL
	Cast Iron (all port sizes)							CI

Symbol



External dimensions and fittings



- 1 Flange specifications for coupling to the ED Directional Valve Elements.
- 2 For tie rod and tightening torque information see data sheet RE 18301-90.

- 3 Hydraulic Port T1 size G 3/8, for TC-01-02-...
- 4 Hydraulic Port T1 size G 1/2, for TC-01-03-...

Part Code	Material Number	Description	Port Size	Material
48-1510N	R930067926	TC-01-02-00-AL-F-C	G 3/8 DIN 3852	Forged Aluminum
48-1511	R933003328	TC-01-03-00-AL	G 1/2 DIN 3852	Aluminum from solid bar

**Bosch Rexroth Oil Control S.p.A.**

Oleodinamica LC Division  
Via Artigianale Sedrio, 12  
42030 Vezzano sul Crostolo  
Reggio Emilia - Italy  
Tel. +39 0522 601 801  
Fax +39 0522 606 226 / 601 802  
compact-hydraulics-cdv@boschrexroth.com  
[www.boschrexroth.com/compacthydraulics](http://www.boschrexroth.com/compacthydraulics)

© This document, as well as the data, specifications and other information set forth in it, are the exclusive property of Bosch Rexroth Oil Control S.p.a.. It may not be reproduced or given to third parties without its consent. The data specified above only serve to describe the product. No statements concerning a certain condition or suitability for a certain application can be derived from our information. The information given does not release the user from the obligation of own judgment and verification. It must be remembered that our products are subject to a natural process of wear and aging.  
Subject to change.