

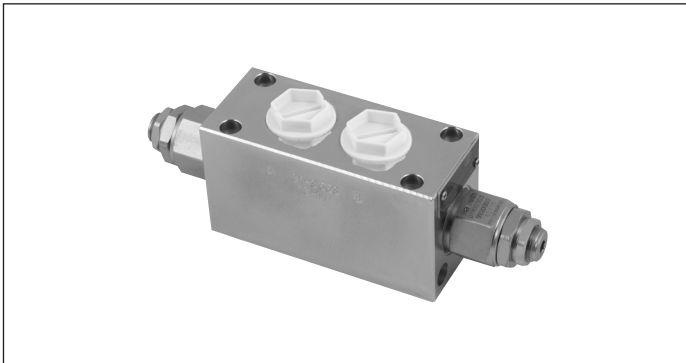
## Flangeable elements with secondary pressure relief valves single or double

EDCM/EDCMF-VM5

**RE 18301-47**

Edition: 02.2016

Replaces: 07.2012



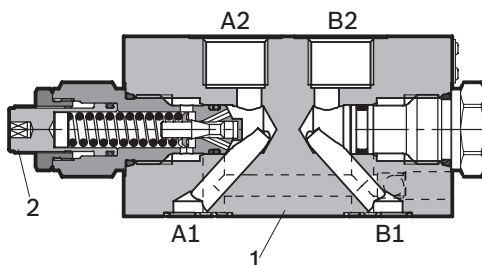
### Description

These modular secondary elements can be flange mounted on top of the EDC elements machined with the interfacing surface.

They let through free flow to the A (or B) port until pressure increases and reaches the pressure setting; then they release flow into the Tank channels (T).

The maximum secondary pressure in line A, or B, can be adjusted through the adjuster screw (2).

The body (1) is made of Yellow Zinc Plated (Cr+3) Cast Iron (CI). Hydraulic Ports A2 and B2 are size G3/8 and G1/2; with the modular version (M) is possible to flange the others type of EDCM-modular-elements available..



### Technical data

General		
Weight	kg (lbs)	2.0 (4.4)
Ambient Temperature	°C (°F)	-20....+50 (-4....+122) (NBR seals)
Hydraulic		
Maximum pressure	bar (psi)	310 (4496)
Maximum flow	l/min (gpm)	50 (13.2)
Hydraulic fluid	Mineral oil based hydraulic fluids HL (DIN 51524 part 1).	
General properties: it must have physical lubricating and chemical properties suitable for use in hydraulic systems such as, for example:	Mineral oil based hydraulic fluids HLP (DIN 51524 part 2). For use of environmentally acceptable fluids (vegetable or polyglycol base) please consult us.	
Fluid Temperature	°C (°F)	-20....+80 (-4....+176) (NBR)
Permissible degree of fluid contamination	ISO 4572: $\beta_{x \geq 75} X=10...12$ ISO 4406: class 19/17/14 NAS 1638: class 8	
Viscosity range	mm <sup>2</sup> /s	5....420

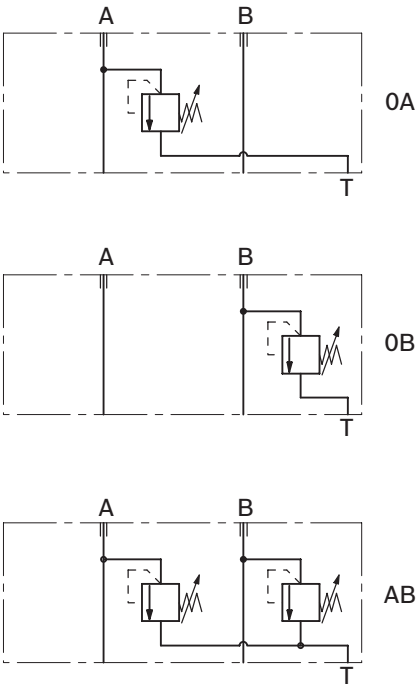
### Note

For applications with different specifications consult us

Ordering details

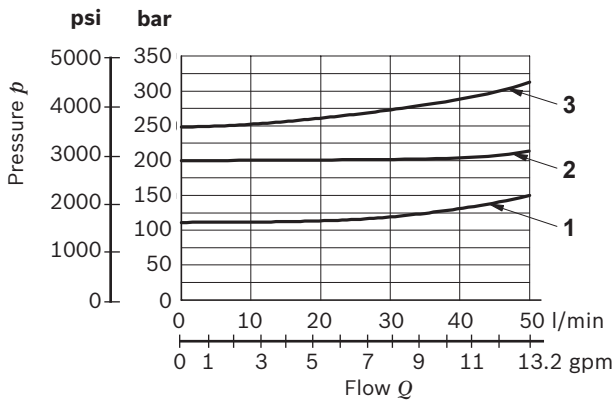
01	02	03	04	05	06	07	08
L	85	61				0	0
Family							
01	Directional Valve						L
Model							
02	Flangeable element for EDC valves						85
Type							
03	Flangeable elements with secondary pressure relief valves single or double						61
Configuration							
04	Pressure relief for both A and B ports						05AB
	Pressure relief for port A only						050A
	Pressure relief for port B only						050B
Pressure adjustment							
05	Relief cartridge with adjuster screw						S
Pressure range on port A							
06	Not present						0
	25-120 bar (360-1740 psi)						N
	40-200 bar (580-2900 psi)						B
	150-350 bar (2175-5075 psi)						V
Pressure range on port B							
07	Not present						0
	25-120 bar (360-1740 psi)						N
	40-200 bar (580-2900 psi)						B
	150-350 bar (2175-5075 psi)						V
Ports							
08	G 3/8 DIN 3852						0
	G 1/2 DIN 3852						2
	3/4-16 UNF 2-B (SAE8)						3
	Machined for interfacing to modular elements						M

Symbols

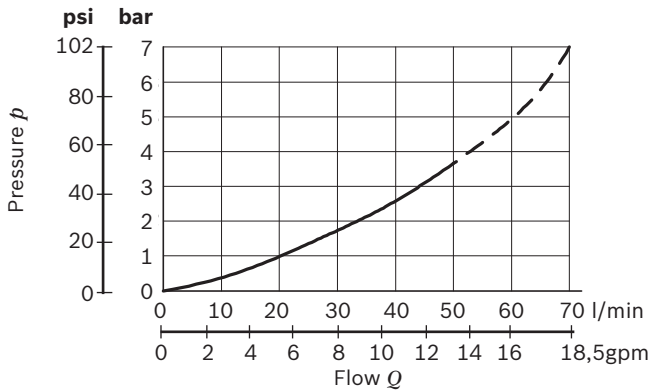


## Characteristic curves

### Pressure relieving



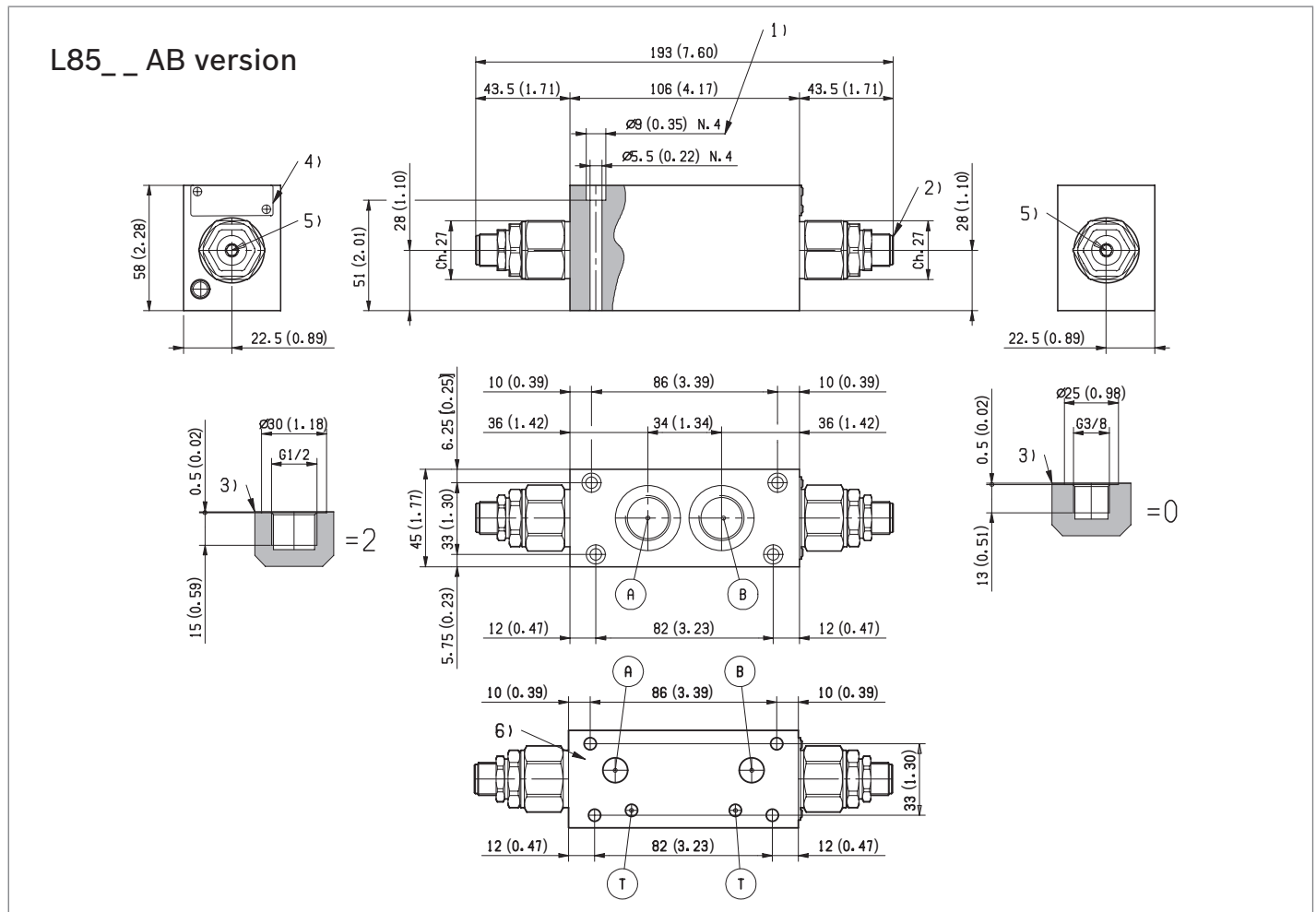
### Pressure drop of the modular element alone



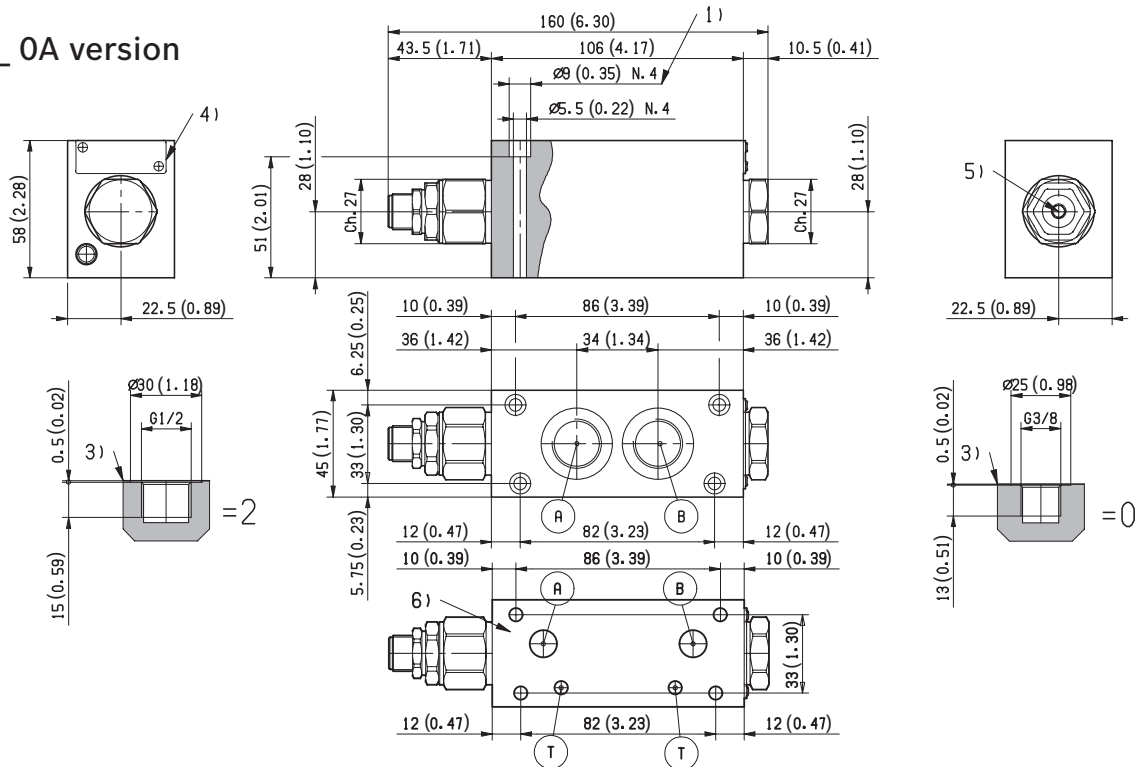
Cracking pressure	Curve no.
VMD1040SN setted at 120bar at 5l/min (1740 psi)	1
VMD1040SB setted at 200bar at 5l/min (2900 psi)	2
VMD1040SV setted at 250bar at 5l/min (3625 psi)	3

Measured with hydraulic fluid ISO-VG32 at 45° ±5 °C (113° ±9 °F); ambient temperature 20 °C (68 °F).

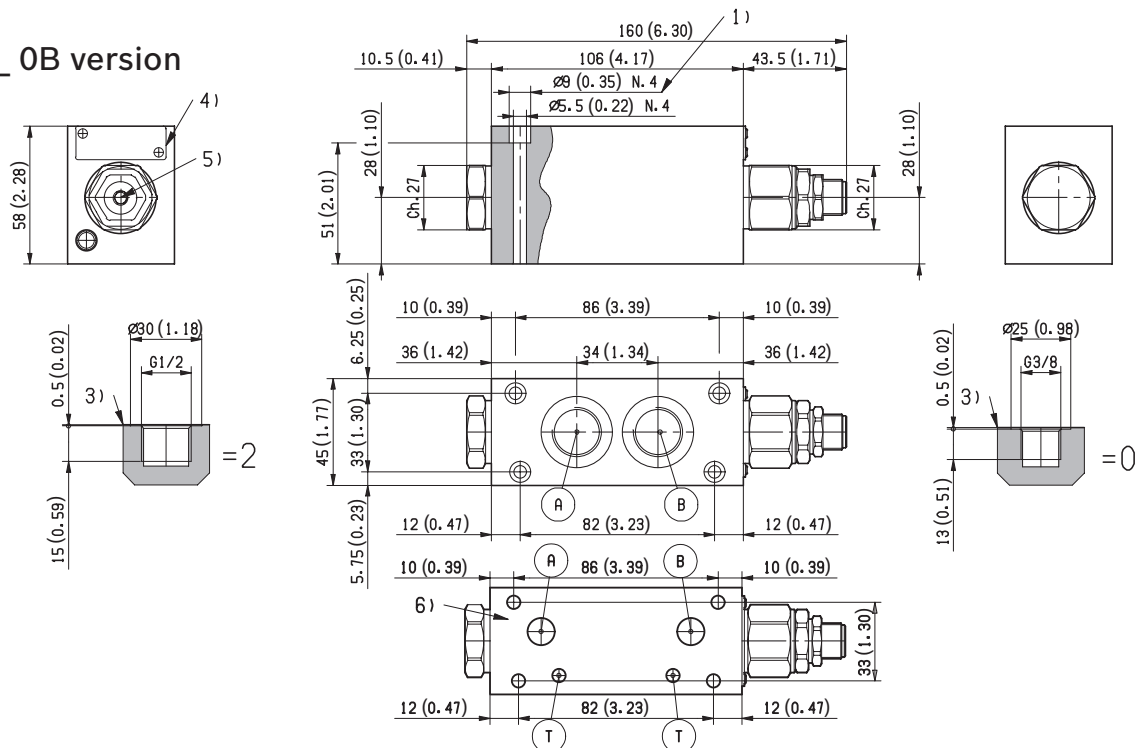
## External dimensions and fittings



### L85\_ \_ 0A version



### L85\_ \_ 0B version



- 1 Four through holes  $\varnothing 5.5$  mm (0.216 inch) for screws and tightening torques see data sheet RE 18301-90.
- 2 Pressure relief cartridge with adjuster screw VMD1040 refer to RE 18301-91.

- 3 A and B ports for the actuator.
- 4 Identification label.
- 5 Adjuster screw.: 5mm (0.2 inch).
- 6 Machined for interfacing to modular elements (=M ports version).

**Bosch Rexroth Oil Control S.p.A.**

Oleodinamica LC Division  
Via Artigianale Sedrio, 12  
42030 Vezzano sul Crostolo  
Reggio Emilia - Italy  
Tel. +39 0522 601 801  
Fax +39 0522 606 226 / 601 802  
compact-hydraulics-cdv@boschrexroth.com  
[www.boschrexroth.com/compacthydraulics](http://www.boschrexroth.com/compacthydraulics)

© This document, as well as the data, specifications and other information set forth in it, are the exclusive property of Bosch Rexroth Oil Control S.p.a.. It may not be reproduced or given to third parties without its consent. The data specified above only serve to describe the product. No statements concerning a certain condition or suitability for a certain application can be derived from our information. The information given does not release the user from the obligation of own judgment and verification. It must be remembered that our products are subject to a natural process of wear and aging.  
Subject to change.