

Flangeable elements with single or double acting Cross Piloted Check Valves

EDM-VR

RE 18301-40

Edition: 02.2016

Replaces: 07.2012



Description

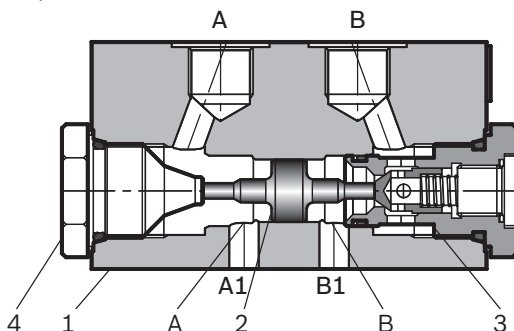
The secondary flangeable elements EDM-VR-__ can be interfaced and bolted on top of the A and B ports of the ED elements of the Directional Valve Assembly.

They incorporate two Cross Piloted Check Valves which allow free flow toward the A and B outlet ports, and lock in a leak free mode the flow returning from the actuator, until sufficient pilot pressure is built up in the opposite line and the check valve is opened.

Depending on the version selected (AB, or OA, or OB), the PO Check Valve is in both A and B ports, or in A port only, or in B port only (see hydraulic symbols).

The Pilot Ratio is 4:1, consequently, the pilot pressure needs to be at least 1/4, or 25% of the load induced pressure in the actuator before the Check Valve opens, and oil can return to tank.

The body of the EDM-VR- elements is made of Black Anodized Aluminium (AL). Hydraulic Ports A2 and B2 are size G 3/8.



Technical data

General		
Weight	kg (lbs)	0.8 (1.76)
EDM-VR AB and A/B		
Ambient Temperature	°C (°F)	-20....+50 (-4....+122) (NBR seals)
Hydraulic		
Maximum pressure	bar (psi)	250 (3625)
Maximum flow	l/min (gpm)	50 (13.2)
Hydraulic fluid	Mineral oil based hydraulic fluids HL (DIN 51524 part 1).	
General properties: it must have physical lubricating and chemical properties suitable for use in hydraulic systems such as, for example:	Mineral oil based hydraulic fluids HLP (DIN 51524 part 2). For use of environmentally acceptable fluids (vegetable or polyglycol base) please consult us.	
Fluid Temperature	°C (°F)	-20....+80 (-4....+176) (NBR)
Permissible degree of fluid contamination	ISO 4572: $\beta_{x \geq 75} X = 12 \dots 15$ ISO 4406: class 20/18/15 NAS 1638: class 9	
Viscosity range	mm ² /s	5....420

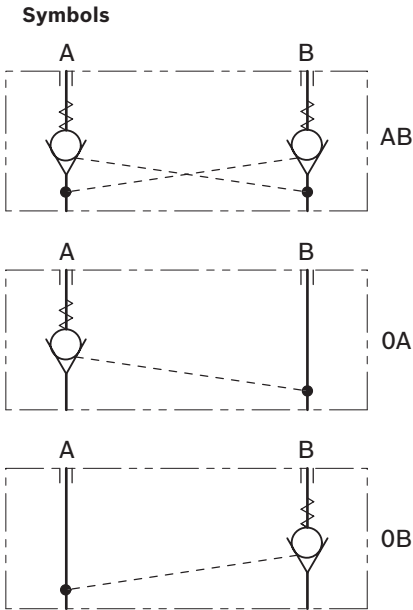
Note

For applications with different specifications consult us

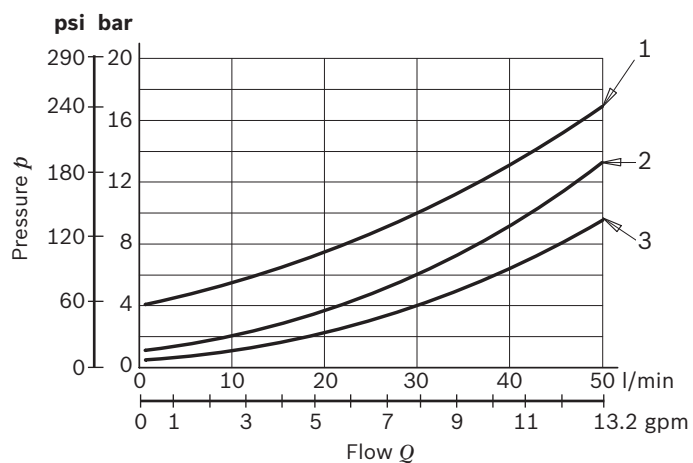
Ordering details

01	02	03	04	05	06		
L	88	40			00		0
Family							
01	Directional Valve elements ED						L
Model							
02	Flangeable element secondary valves						88
Type							
03	Cross Piloted Check Valves						40
Configuration							
04	Check Valves for both A and B ports						00AB
	Check Valve for port A only						000A
	Check Valve for port B only						000B
Cracking Pressure							
05	0.5 bar (7.3 psi)						01
	4 bar (58 psi)						04
Ports ¹⁾							
06	G 3/8 DIN 3852, flangeable on G 3/8 ports						0
	9/16-18 UNF 2-B (SAE6), flangeable on G 3/8 ports						1
	3/4-16 UNF 2-B (SAE8), flangeable on G 3/8 ports						3
	3/4-16 UNF 2-B (SAE8), flangeable on SAE8 ports						A

1) Modular elements can be flanged on standard G 3/8 or SAE8 valve body.



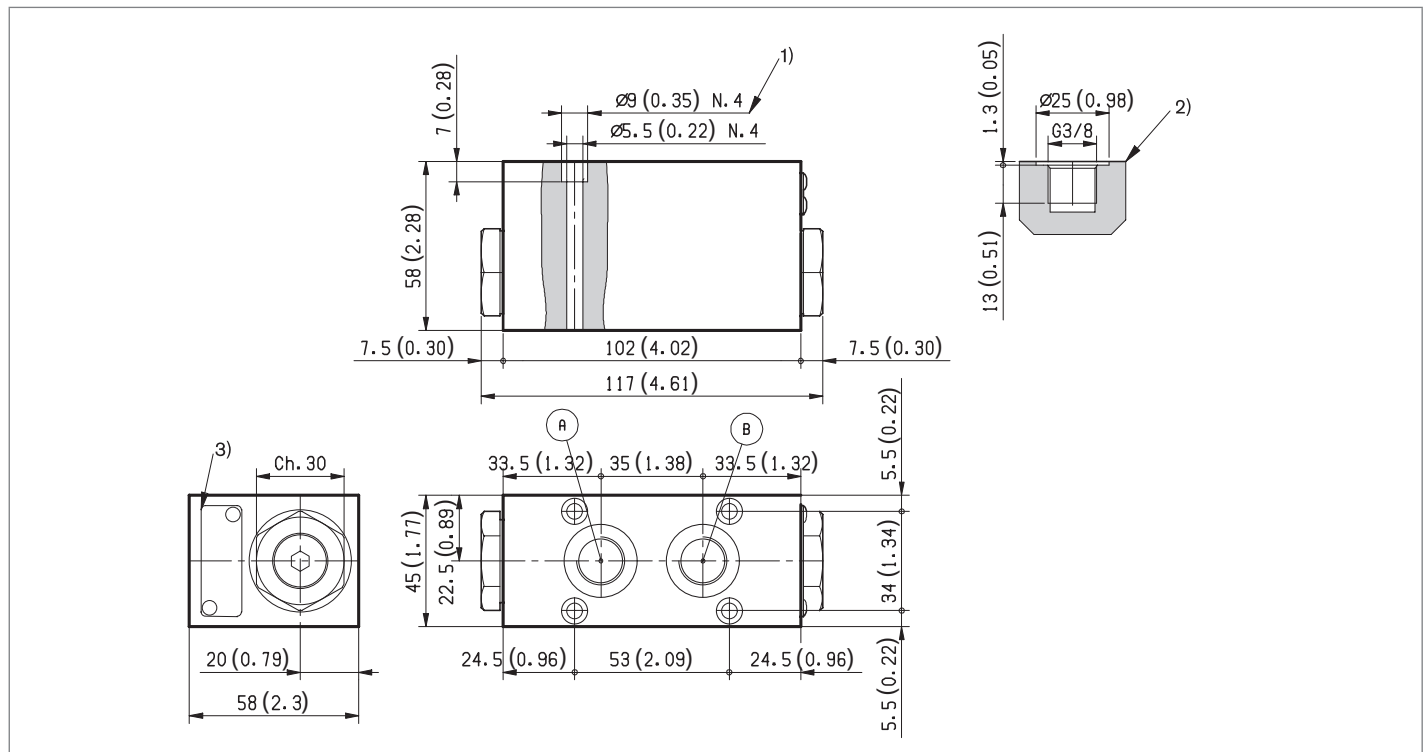
Characteristic curves



Cracking pressure	Curve no.
4 bar (58 psi) free flow either $A1 > A2$ or $B1 > B2$	1
0.5 bar (7.3 psi) free flow either $A1 > A2$ or $B1 > B2$	2
Returning flow, fully piloted, either $A2 > A1$ or $B2 > B1$	3

Measured with hydraulic fluid ISO-VG32 at $45^\circ \pm 5^\circ \text{C}$
 $(113^\circ \pm 9^\circ \text{F})$; ambient temperature 20°C (68°F).

External dimensions and fittings



- 1 Four through holes $\varnothing 5.5$ mm (0.217 inch) for screws and tightening torques see data sheet RE 18301-90.
- 2 A and B ports for the actuator.
- 3 Identification label.

Bosch Rexroth Oil Control S.p.A.

Oleodinamica LC Division
Via Artigianale Sedrio, 12
42030 Vezzano sul Crostolo
Reggio Emilia - Italy
Tel. +39 0522 601 801
Fax +39 0522 606 226 / 601 802
compact-hydraulics-cdv@boschrexroth.com
www.boschrexroth.com/compacthydraulics

© This document, as well as the data, specifications and other information set forth in it, are the exclusive property of Bosch Rexroth Oil Control S.p.A.. It may not be reproduced or given to third parties without its consent. The data specified above only serve to describe the product. No statements concerning a certain condition or suitability for a certain application can be derived from our information. The information given does not release the user from the obligation of own judgment and verification. It must be remembered that our products are subject to a natural process of wear and aging.
Subject to change.