

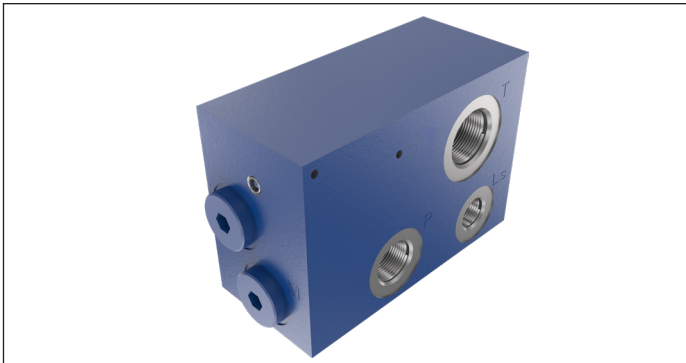
EDG Inlet Elements

TEG-00/20

RE 18300-17

Edition: 09.2024

Replaces: 07.2024



Description

The inlet elements have threaded ports and connect the external P, T and LS lines to the P, T and LS channels of the EDG Directional Valve Elements.

Port sizes configurations are listed at page 2.

Material: the body can be made of Black Anodized Aluminium (AL), or of Yellow Zinc plated (Cr+3) Cast Iron (CI).

Technical data

General		
Weight	kg (lbs)	2.00 (4.40)
TEG-00/20 - CI element		
Weight	kg (lbs)	0.80 (1.76)
TEG-00/20 - AL element		
Ambient Temperature	°C (°F)	-20....+90 (-4....+194) (NBR seals)
Hydraulic		
Maximum pressure for aluminium version (AL)	bar (psi)	250 (3625)
Maximum pressure for Cast Iron version (CI)	bar (psi)	350 (5000)
Hydraulic fluid	Mineral oil based hydraulic fluids HL (DIN 51524 part 1). Mineral oil based hydraulic fluids HLP (DIN 51524 part 2). For use of environmentally acceptable fluids (vegetable or polyglycol base) please consult us.	
General properties: it must have physical lubricating and chemical properties suitable for use in hydraulic systems.		
Fluid Temperature	°C (°F)	-30....+100 (-22....+212) (NBR)
Permissible degree of fluid contamination	ISO 4572: $\beta_{x \geq 75}$ $X=12...15$ ISO 4406: class 20/18/15 NAS 1638: class 9	
Viscosity range	mm ² /s	5....420

Note

For applications with different specifications consult us.

Ordering details

Symbol

00	01	02	03	04	05					
TEG	-	00	/	2	0	-	--	00	-	--

Family

00	Inlet Elements for EDG family	TEG
----	-------------------------------	-----

Configuration

01	With P, T and LS connections	00
----	------------------------------	----

Flange

02	With P-TA-TB-LS-YA-YB-X-Y lines	2
----	---------------------------------	---

Pilot oil supply option

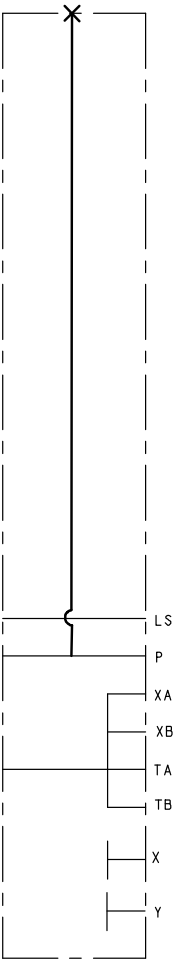
03	No pilot oil supply option: without valve cavity (not drilled) for pressure reducing and relieving valve, without external oil supply	0
----	---	---

Ports

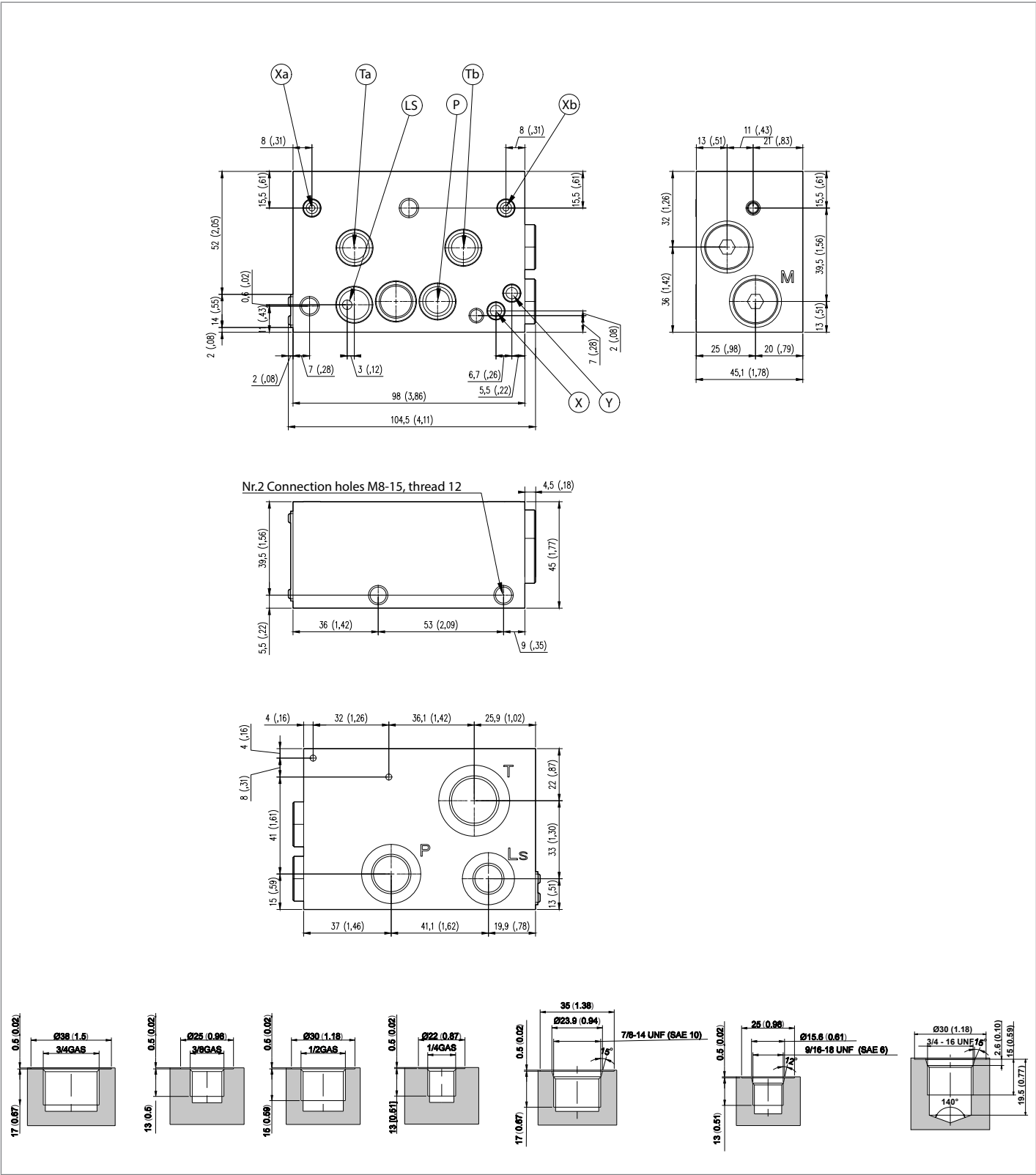
04	P G 1/2 DIN 3852; T G 3/4 DIN 3852; LS G 1/4 DIN 3852; MP G 1/4 DIN 3852	01
	P G 1/2 DIN 3852; T G 1/2 DIN 3852; LS G 1/4 DIN 3852; MP G 1/4 DIN 3852	02
	P SAE10; T SAE12; LS SAE4; MP SAE4	04
	P SAE8; T SAE10; LS SAE6; MP SAE6	06

Material

05	Aluminium	AL
	Cast Iron	CI



External dimensions and fittings



Note
For flange pattern, please refer to RE18301-19.

Bosch Rexroth Oil Control S.p.A.

Oleodinamica LC Division
Via Artigianale Sedrio, 12
42030 Vezzano sul Crostolo
Reggio Emilia - Italy
Tel. +39 0522 601 801
Fax +39 0522 606 226 / 601 802
compact-hydraulics-cdv@boschrexroth.com
www.boschrexroth.com/compacthydraulics

© This document, as well as the data, specifications and other information set forth in it, are the exclusive property of Bosch Rexroth Oil Control S.p.a.. It may not be reproduced or given to third parties without its consent. The data specified above only serve to describe the product. No statements concerning a certain condition or suitability for a certain application can be derived from our information. The information given does not release the user from the obligation of own judgment and verification. It must be remembered that our products are subject to a natural process of wear and aging.
Subject to change.