

Inlet Elements

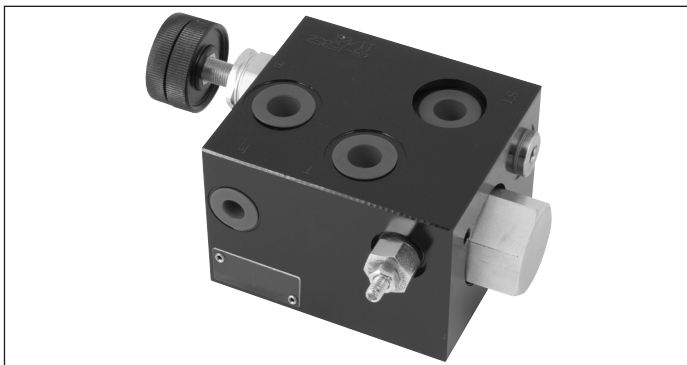
with limitation of primary pressure, LS compensated flow control and solenoid operated unloading

TE-07-__-

RE 18300-07

Edition: 05.2022

Replaces: 02.2016



Description

The inlet elements TE-07-__ are employed to connect the external P, T lines to the P, T channels inside the ED elements of the Directional Valve Assembly and to connect to the LS ports of the elements equipped with LS channels. The main functions are: to provide LS controlled pressure compensated flow to the Directional Valve Elements, to limit the primary pressure in the P channels and to unload to Tank the inlet flow when all hydraulic operations must be inhibited, by de-energizing the VEI solenoid operated cartridge.

They are available in two versions: TE-07-01-03-... suitable for fixed displacement pumps, and TE-07-02-03-... for variable displacement pumps. The TE-07-__ inlet elements are manufactured with body made of Black Anodized Aluminium (AL). Port sizes are G 1/2, with LS and M test points G1/4.

NOTE: the mechanical locking of the 3-way pressure compensator can be supplied upon request.

Technical data

General		
TE-07-__-	kg (lbs)	1.80 (3.98)
Ambient Temperature	°C (°F)	-20....+50 (-4....+122) (NBR seals)
Hydraulic		
Maximum pressure	bar (psi)	250 (3625)
Maximum inlet flow	l/min (gpm)	90 (23.8)
Rated flow at P1	l/min (gpm)	0-30 (0-7.9)
Hydraulic fluid	Mineral oil based hydraulic fluids HL (DIN 51524 part 1). Mineral oil based hydraulic fluids HLP (DIN 51524 part 2). For use of environmentally acceptable fluids (vegetable or polyglycol base) please consult us.	
General properties: it must have physical lubricating and chemical properties suitable for use in hydraulic systems such as, for example:		
Fluid Temperature	°C (°F)	-20....+80 (-4....+176) (NBR)
Permissible degree of fluid contamination	ISO 4572: $\beta_{x \geq 75} X = 10 \dots 12$ ISO 4406: class 19/17/14 NAS 1638: class 8	
Viscosity range	mm ² /s	5....420

Note

For applications with different specifications consult us

Ordering details

01	02	03	04	05	06	07	08	09	10	11
TE	-	07	-	-	-	-	-	-	-	-

Family

01	Inlet Elements	TE
----	----------------	----

Configuration

02	with limitation of primary pressure, LS compensated flow control and solenoid operated unloading	07
----	--	----

Application Scheme

03	For open center or open/closed center	01
	For closed center	02

Ports

04	G 1/2 DIN 3852	03
	3/4-16 UNF 2-B (SAE8)	56

Pressure Relief range

05	50-210bar (725-3046 psi)	01
	100-250bar (1450-3626 psi)	02

Restrictor adjustment

06	Flow restrictor with screw type adjustment	S
	Flow restrictor with hand-knob adjustment	K

3-way compensator type

07	Without mechanical blocking	00
	With mechanical blocking ¹⁾	01

Cartridge voltage supply

08	No cartridge	No code
	Cartridge without coil	00
	12V DC	OB
	24V DC	OC
	26V DC	AC

Electric connections

09	No cartridge	No code
	Without coils	00
	With coils, without mating connector	01
	With coils, with bi-directional diode, without mating connector vertical Amp-Junior	03
	With coils, with bi-directional diode, without mating connector DT04-2P	07

Options

10	No cartridge	No code
	Standard	00
	Push-button type manual override	OP
	Push and twist type manual override	SG

Components Series

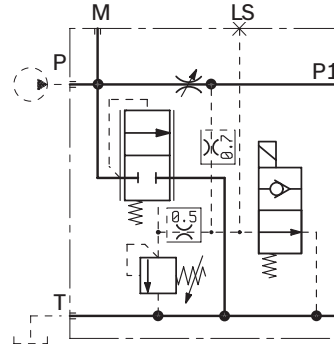
11	No cartridge	No code
	With VEI cartridge	1

1) Necessary for open/closed center configuration.

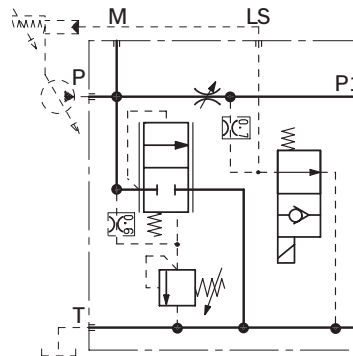
2) For connectors ordering code see data sheet RE 18325-90.

▼ Symbol

TE-07-01-03 Open center, Open/Closed center

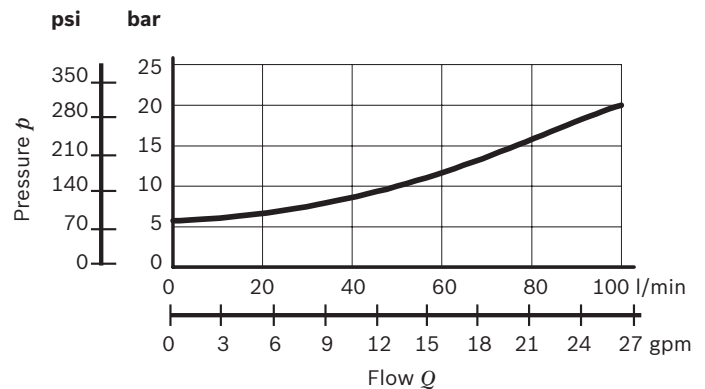


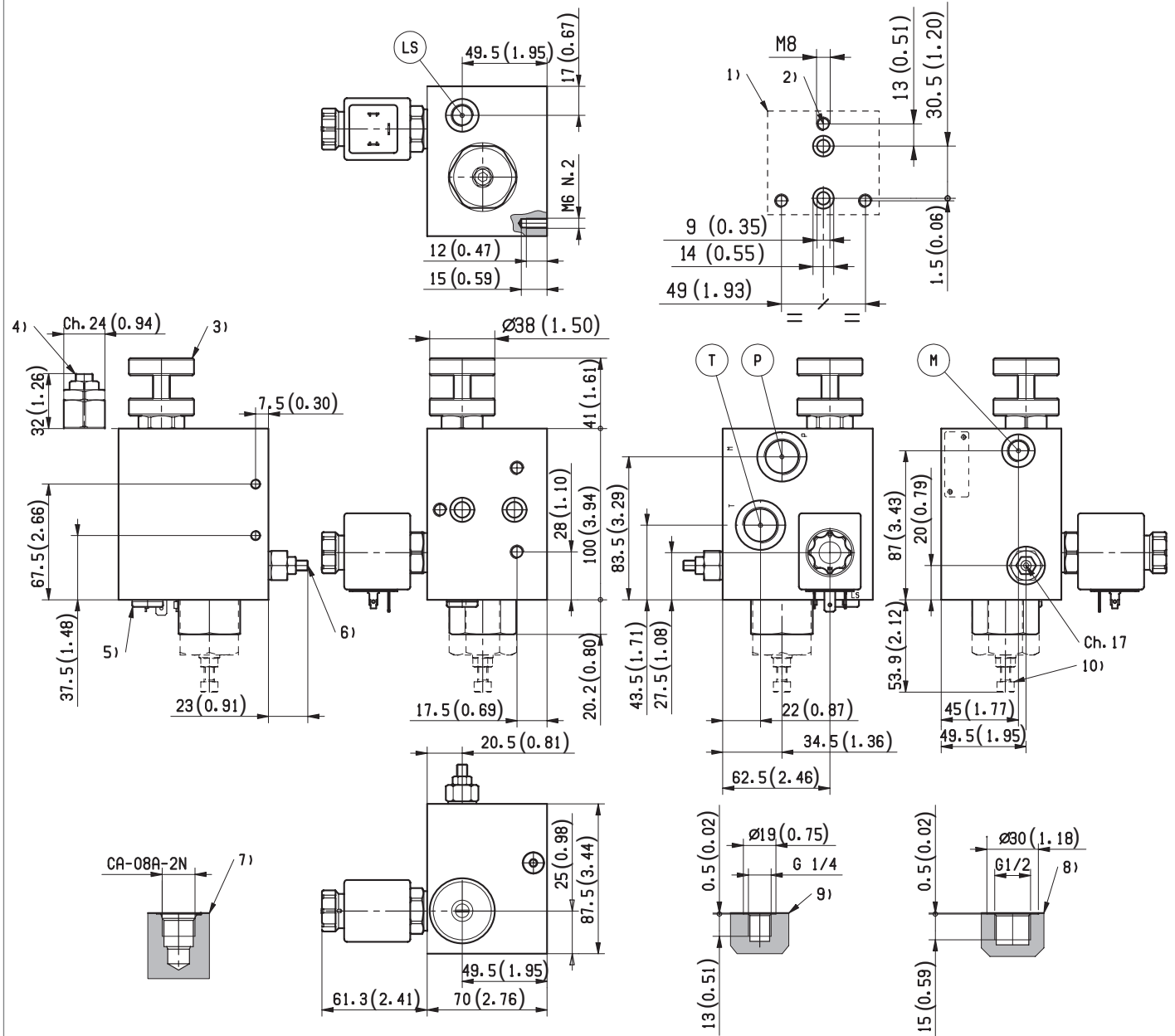
TE-07-02-03 Closed center



Characteristic curves

Pressure drop through compensator



External dimensions and fittings

- 1** Flange specifications for coupling to the ED Directional Valve Elements.
- 2** For tie rod and tightening torque information see data sheet RE 18301-90.
- 3** Flow restrictor with hand-knob adjustment.
- 4** Flow restrictor with screw type adjustment.
- 5** Plug G 1/4 for version TE-07-01-03-...

- 6** Pressure relief cartridge VS-5-C.
- 7** Cavity for Solenoid Cartridge, VEI type.
- 8** Hydraulic Ports P-T G 1/2.
- 9** G 1/4 ports for pressure gauge connection and LS signal.
- 10** Overall dimension, including compensator, for TE-07-__-03-__-01.

Bosch Rexroth Oil Control S.p.A.

Oleodinamica LC Division
Via Artigianale Sedrio, 12
42030 Vezzano sul Crostolo
Reggio Emilia - Italy
Tel. +39 0522 601 801
Fax +39 0522 606 226 / 601 802
compact-hydraulics-cdv@boschrexroth.com
www.boschrexroth.com/compacthydraulics

© This document, as well as the data, specifications and other information set forth in it, are the exclusive property of Bosch Rexroth Oil Control S.p.a.. It may not be reproduced or given to third parties without its consent. The data specified above only serve to describe the product. No statements concerning a certain condition or suitability for a certain application can be derived from our information. The information given does not release the user from the obligation of own judgment and verification. It must be remembered that our products are subject to a natural process of wear and aging.
Subject to change.