

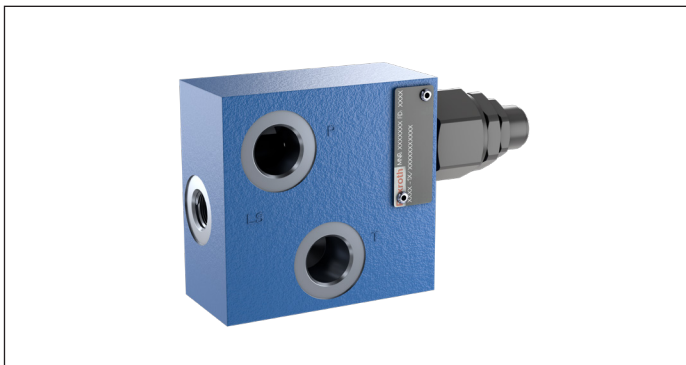
# Inlet Elements with Primary Pressure Relief Valve and with LS connections

TE-04-\_\_-

**RE 18300-04**

Edition: 01.2024

Replaces: 02.2016



## Description

The inlet elements TE-04-\_\_ are employed to connect the external P, T lines to the P, T channels inside the ED elements of the Directional Valve Assembly and to connect to the LS ports of the elements equipped with LS channels. They incorporate a pressure relief cartridge which limits the maximum primary pressure in the P line and unloads to Tank any excess flow.

The TE-04-\_\_ inlet elements are available with body made of Black Anodized Aluminium (AL).

Hydraulic Ports P and T can be size G 3/8, G 1/2 or SAE 8 (3/4" 16 UNF). LS port is G 1/4 on BSPP versions, and SAE 4 in SAE versions.

## Technical data

| General   |   |  |
|---|---|--|
| TE-04-00  | kg (lbs)  | 0.58 (1.27)                            |
| TE-04-01  | kg (lbs)  | 0.70 (1.54)                            |
| Ambient Temperature   | °C (°F)   | -20....+50 (-4....+122)<br>(NBR seals) |
| Hydraulic   |   |  |
| Maximum pressure  | bar (psi)   | 250 (3625)                             |
| Maximum inlet flow  | l/min (gpm)   | 50 (13.2)                              |
| Hydraulic fluid   | Mineral oil based hydraulic fluids HL (DIN 51524 part 1). Mineral oil based hydraulic fluids HLP (DIN 51524 part 2). For use of environmentally acceptable fluids (vegetable or polyglycol base) please consult us. |  |
| General properties: it must have physical lubricating and chemical properties suitable for use in hydraulic systems such as, for example: |   |  |
| Fluid Temperature   | °C (°F)   | -20....+80 (-4....+176) (NBR)          |
| Permissible degree of fluid contamination   | ISO 4572: $\beta_{x \geq 75} X = 10 \dots 12$<br>ISO 4406: class 19/17/14<br>NAS 1638: class 8  |  |
| Viscosity range   | mm <sup>2</sup> /s  | 5....420                               |

## Note

For applications with different specifications consult us

Ordering details

|    |    |    |    |    |    |  |   |  |   |    |
|----|----|----|----|----|----|--|---|--|---|----|
| 01 | 02 | 03 | 04 | 05 | 06 |  |   |  |   |    |
| TE | -  | 04 | -  |    | -  |  | - |  | - | AL |

**Family**

|    |                |    |
|----|----------------|----|
| 01 | Inlet Elements | TE |
|----|----------------|----|

**Configuration**

|    |  |    |
|----|--|----|
| 02 | With primary pressure relief valve and with LS connections | 04 |
|----|--|----|

**Ports**

|    |                      |    |
|----|----------------------|----|
| 03 | G 3/8 DIN 3852       | 02 |
|    | G 1/2 DIN 3852       | 03 |
|    | 3/4-16 UNF-2B (SAE8) | 56 |

**Primary Pressure Relief range**

|    |   |    |
|----|---|----|
| 04 | Cavity without primary pressure relief valve (to be ordered separately) | 00 |
|    | 25-125bar (362-1813 psi)  | SN |
|    | 40-200bar (580-2900 psi)  | SB |
|    | 200-350bar (2900-5076 psi)  | SV |

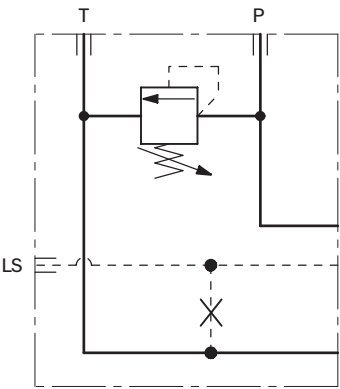
**Size of drain orifice for LS**

|    |                           |    |
|----|---------------------------|----|
| 05 | Without drain orifice     | 00 |
|    | Orefice 0.3 mm (0.012 in) | 01 |
|    | Orefice 0.4 mm (0.016 in) | 02 |
|    | Orefice 0.5 mm (0.020 in) | 03 |

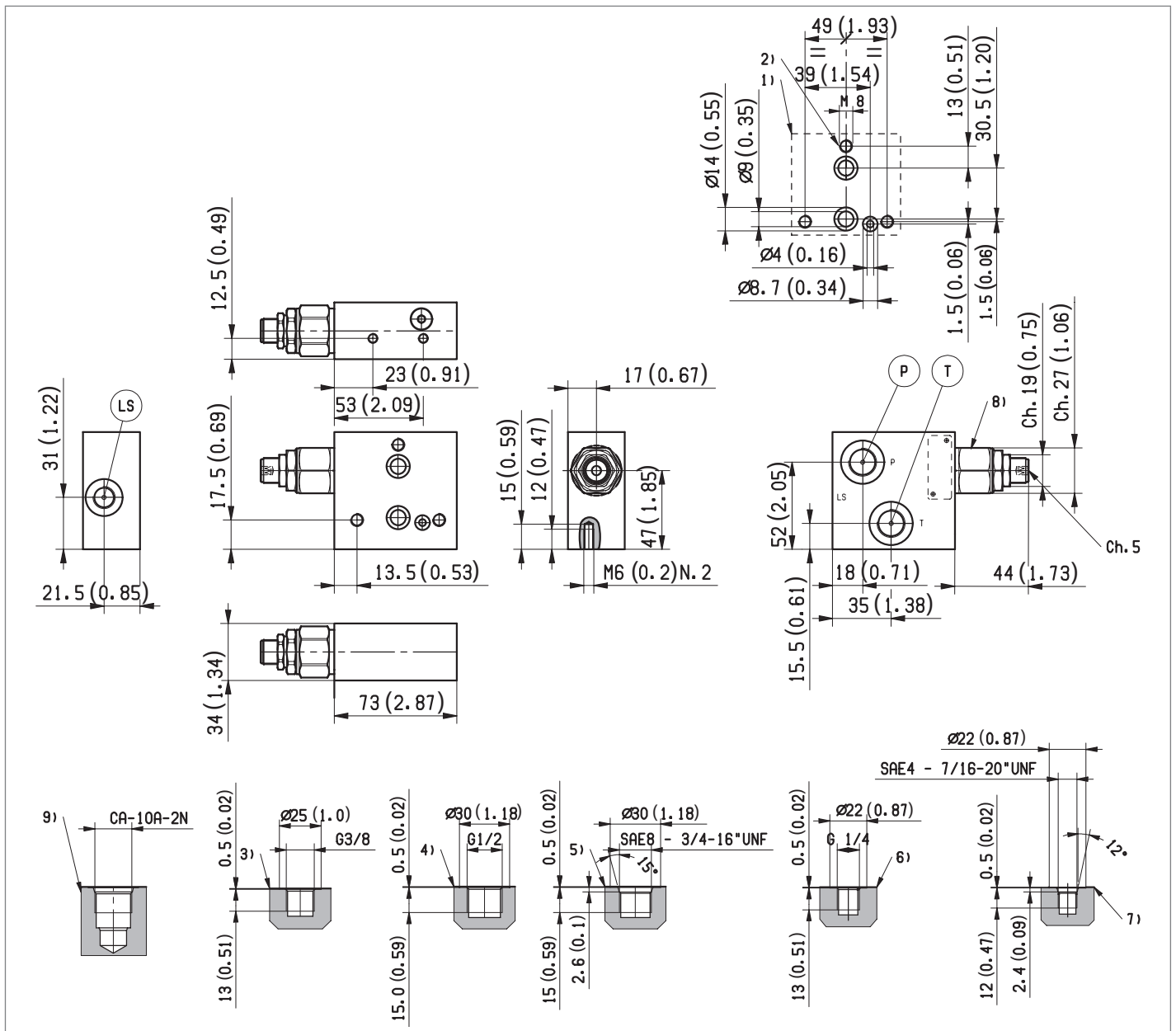
**Material**

|    |           |    |
|----|-----------|----|
| 06 | Aluminium | AL |
|----|-----------|----|

Symbol



## External dimensions and fittings



- |   |  |
|---|--|
| <p><b>1</b> Flange specifications for coupling to the ED Directional Valve Elements.</p> <p><b>2</b> For tie rod and tightening torque information see data sheet RE 18301-90.</p> <p><b>3</b> Hydraulic Ports P-T G 3/8, for Inlet Elements TE-04-02...</p> <p><b>4</b> Hydraulic Ports P-T G 1/2, for versions TE-04-03-...</p> <p><b>5</b> Hydraulic Ports P-T SAE 8, for versions TE-04-56.</p> | <p><b>6</b> Test Point port G 1/4, for Inlet Elements TE-04-02... and TE-04-03...</p> <p><b>7</b> Test Point port SAE 4, for versions TE-04-56-...</p> <p><b>8</b> Primary Pressure Relief Cartridge VMD1040, with screw type adjuster (refer to RE 18301-91).</p> <p><b>9</b> Cavity for Primary Pressure Relief Cartridge VMD1040.</p> |
|---|--|

**Bosch Rexroth Oil Control S.p.A.**

Oleodinamica LC Division  
Via Artigianale Sedrio, 12  
42030 Vezzano sul Crostolo  
Reggio Emilia - Italy  
Tel. +39 0522 601 801  
Fax +39 0522 606 226 / 601 802  
compact-hydraulics-cdv@boschrexroth.com  
www.boschrexroth.com/compacthydraulics

© This document, as well as the data, specifications and other information set forth in it, are the exclusive property of Bosch Rexroth Oil Control S.p.a.. It may not be reproduced or given to third parties without its consent. The data specified above only serve to describe the product. No statements concerning a certain condition or suitability for a certain application can be derived from our information. The information given does not release the user from the obligation of own judgment and verification. It must be remembered that our products are subject to a natural process of wear and aging.  
Subject to change.