

## Inlet Elements basic

TE-00-\_\_-

**RE 18300-01**

Edition: 01.2024

Replaces: 02.2016



### Description

The inlet elements have threaded ports and connect the external P and T lines to the P and T channels of the ED Directional Valve Elements.

They include a Test Point port (M) for pressure gauge connection.

Port sizes can be G 3/8, G 1/2 or SAE 8 (3/4 16 UNF).

Material: the body can be made of Black Anodized Aluminium (AL), or of Yellow Zinc plated (Cr+3) Cast Iron (CI).

### Technical data

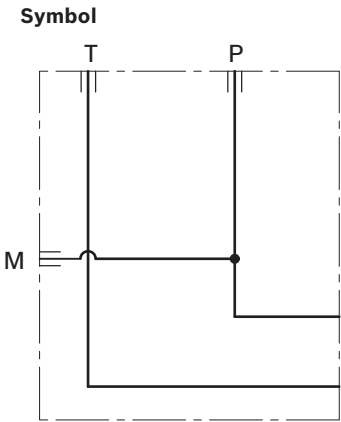
General			
Inlet Element Type		AL Version	CI Version
TE-00-02-00	kg (lbs)	0.33 (0.72)	0.82 (1.81)
TE-00-03-00	kg (lbs)	0.53 (1.16)	1.35 (2.88)
TE-00-56-00	kg (lbs)	0.53 (1.16)	1.35 (2.88)
Ambient Temperature	°C (°F)	-20....+50 (-4....+122) (NBR seals)	
Hydraulic			
Maximum pressure for aluminium version (AL)	bar (psi)	250 (3625)	
Maximum pressure for Cast Iron version (CI)	bar (psi)	310 (4500)	
Maximum inlet flow	l/min (gpm)	50 (13.2)	
Hydraulic fluid	Mineral oil based hydraulic fluids HL (DIN 51524 part 1).		
General properties: it must have physical lubricating and chemical properties suitable for use in hydraulic systems such as, for example:	Mineral oil based hydraulic fluids HLP (DIN 51524 part 2). For use of environmentally acceptable fluids (vegetable or polyglycol base) please consult us.		
Fluid Temperature	°C (°F)	-20....+80 (-4....+176) (NBR)	
Permissible degree of fluid contamination	ISO 4572: $\beta_x \geq 75$ X=12...15 ISO 4406: class 20/18/15 NAS 1638: class 9		
Viscosity range	mm²/s	5....420	

### Note

For applications with different specifications consult us

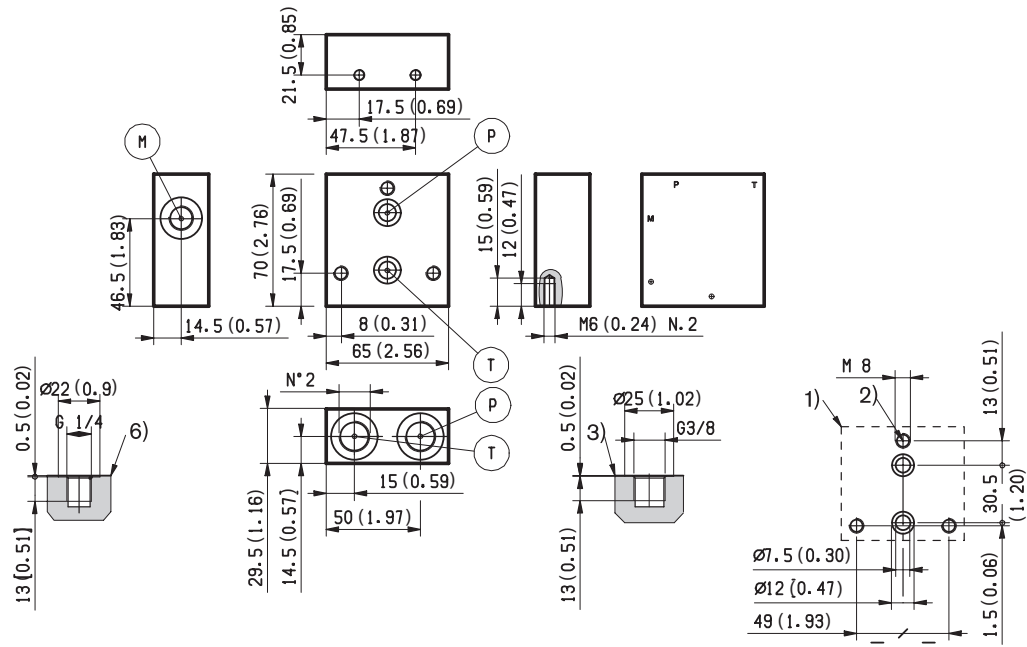
Ordering details

01	02	03	04					
TE	-	00	-		-	00	-	
Family								
01	Inlet Elements							TE
Configuration								
02	Basic							00
Ports								
03	G 3/8 DIN 3852							02
	G 1/2 DIN 3852							03
	3/4-16 UNF-2B (SAE8)							56
Material								
04	Cast Iron							CI
	Aluminium							AL



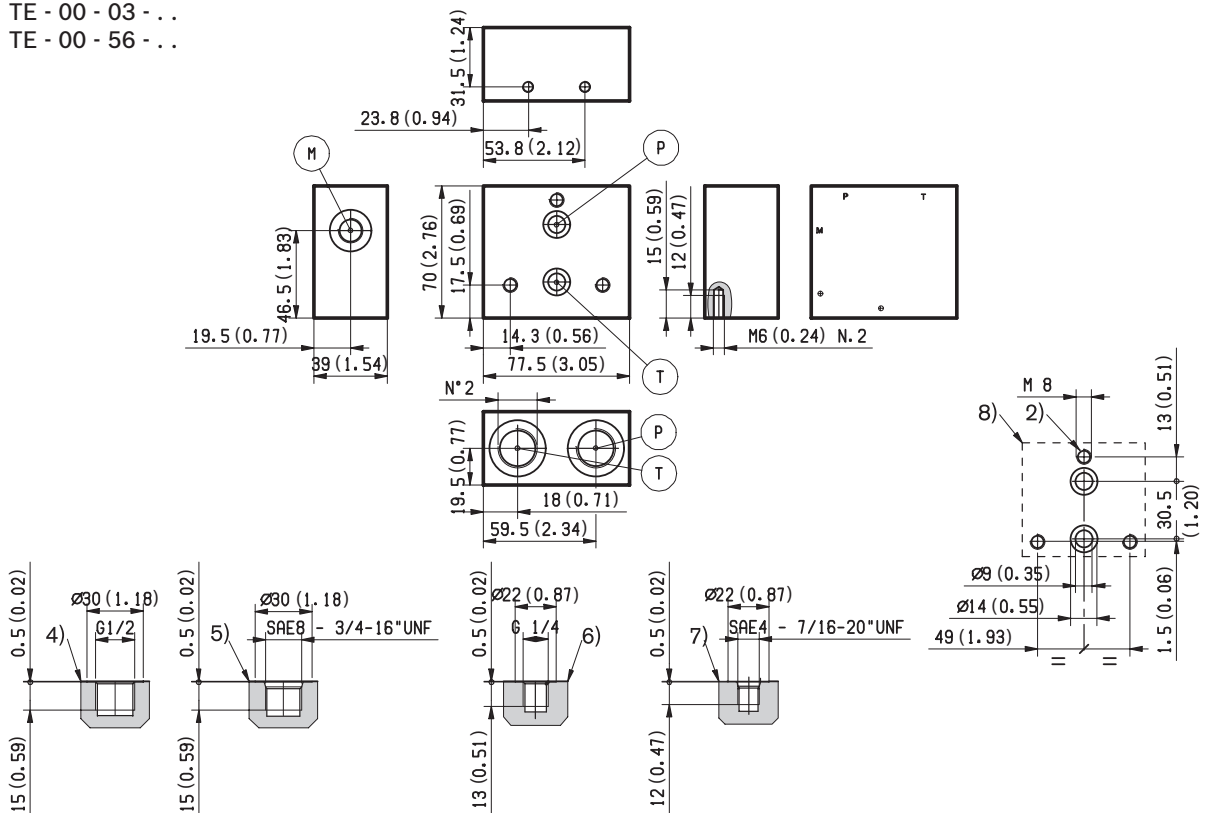
**External dimensions and fittings**

TE - 00 - 02 - . .



TE - 00 - 03 - . .

TE - 00 - 56 - . .



- 1 Flange details for interfacing with the ED Directional Valve Elements (Version TE-00-02...).
- 2 For tie rod and tightening torque information see data sheet RE 18301-90.
- 3 Hydraulic Ports P-T, for Inlet Elements TE-00-02..
- 4 Hydraulic Ports P-T, for Inlet Modules TE-00-03..

- 5 Hydraulic Ports P-T, for Inlet Elements TE-00-56..
- 6 Test Point port (M), for Inlet Elements TE-00-02.. and TE-00-03..
- 7 Test Point port (M), for Inlet Elements TE-00-56..
- 8 Flange details for interfacing with the ED Directional Valve Elements (Version TE-00-03... and TE-00-56...).

**Bosch Rexroth Oil Control S.p.A.**

Oleodinamica LC Division  
Via Artigianale Sedrio, 12  
42030 Vezzano sul Crostolo  
Reggio Emilia - Italy  
Tel. +39 0522 601 801  
Fax +39 0522 606 226 / 601 802  
compact-hydraulics-cdv@boschrexroth.com  
[www.boschrexroth.com/compacthydraulics](http://www.boschrexroth.com/compacthydraulics)

© This document, as well as the data, specifications and other information set forth in it, are the exclusive property of Bosch Rexroth Oil Control S.p.a.. It may not be reproduced or given to third parties without its consent. The data specified above only serve to describe the product. No statements concerning a certain condition or suitability for a certain application can be derived from our information. The information given does not release the user from the obligation of own judgment and verification. It must be remembered that our products are subject to a natural process of wear and aging.  
Subject to change.