

RE 18330-40/04.23

Replaces: RE 18330-40/11.20

Check poppet type

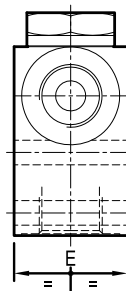
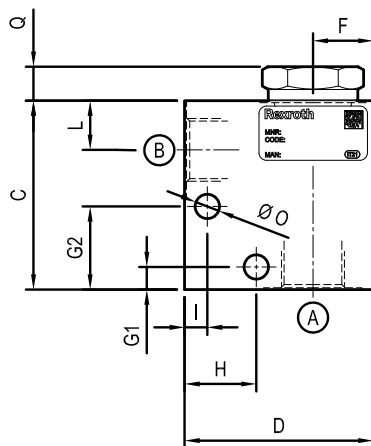
Common cavity

Cartridge style in manifold

VUCN-08A-C

OU.01 - K - 00 - Y - Z - W

Dimensions



Technical data

Max flow:	up to 50 l/min	(13 gpm)
Max operating pressure for steel body:	350 bar	(5000 psi)
Max operating pressure for aluminium body:	210 bar	(3000 psi)

To order only manifold see data sheet RE 18325-85

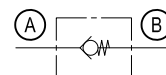


Table “Y”

[illegible]

Cartridge style

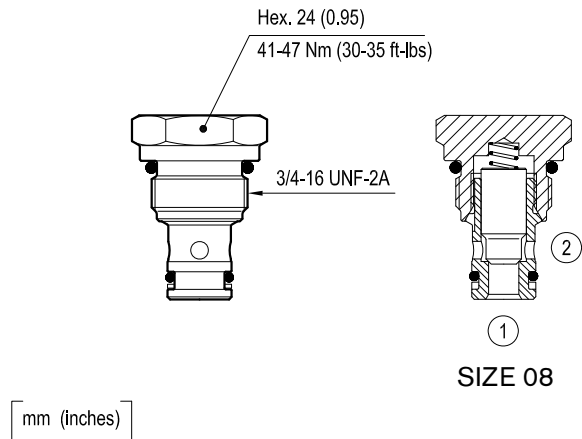


Table “K”

CARTRIDGE CODE	K						
	04	31	20	00	56	Z	VUCN-08A

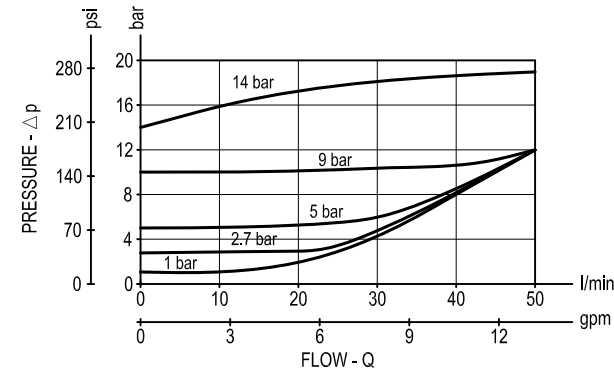
CARTRIDGE TECHNICAL DATA

Common cavity: **CA-08A-2N**
For other details see data sheet RE 18318-89

Table “Z”

Z	SPRINGS														
	SIZE 08			SIZE 10			SIZE 12			SIZE 16			SIZE 20		
	Cracking pressure bar(psi)			Cracking pressure bar(psi)			Cracking pressure bar(psi)			Cracking pressure bar(psi)			Cracking pressure bar(psi)		
A0	0.3 (4.5)														
00	1 (15)														
03	2.7 (39)														
05	5 (75)														
06	6 (87)														
09	9 (131)														
14	14 (200)														

Performance graph



Ordering code

OU.01	K	00	Y	Z	W
-------	---	----	---	---	---

Manifold with check poppet type

Cartridge style - Common cavity
(see table K on page 2)

Manifold material

= 00	Aluminium manifold
-------------	--------------------

= S0	Steel manifold
-------------	----------------

Settings - Springs

(see table Z on page 2)

Manifold style - Dimensions and port sizes
(see table Y on page 1)

Preferred types (readily available)

[illegible][illegible]

Further types available by request

