

Solenoid operated valves direct acting poppet type 2-way double lock, special cavity 019-E Cartridge style in manifold

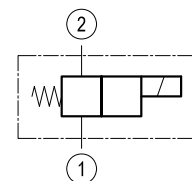
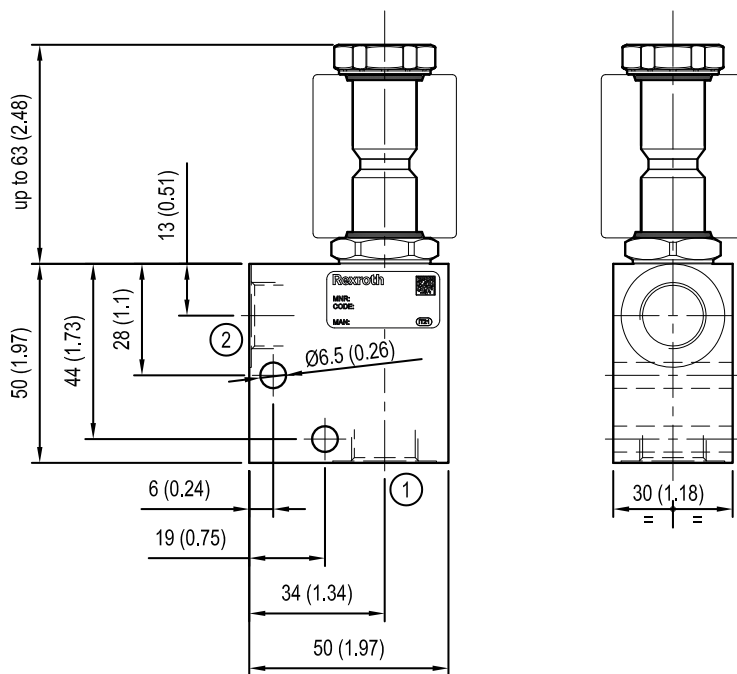
VEDT-CS-16-08S-NC

OS.11.31.19 - X - Y - Z - W

RE 18331-64

Edition: 04.2023

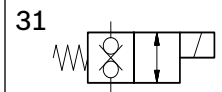
Replaces: 03.2019



Cartridge schemes

monodirectional
type

bidirectional type



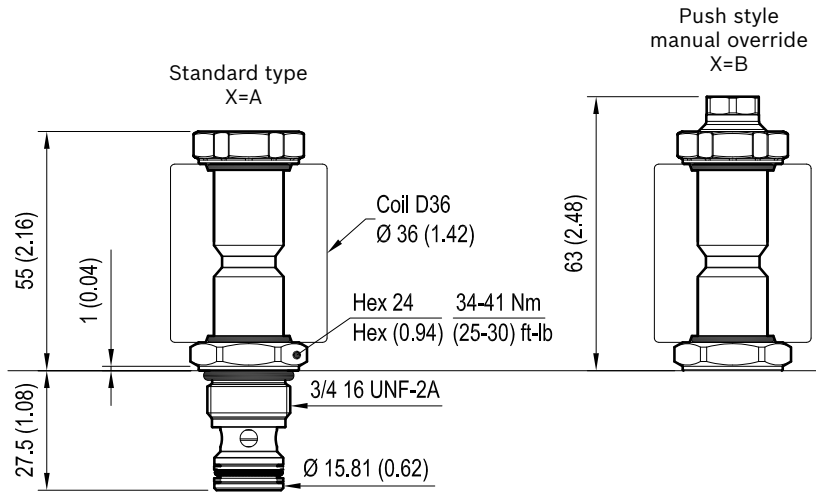
[mm (inches)]

Technical data

Max. flow	up to 15 l/min (4 gpm)*
Max. operating pressure for steel body	250 bar (3625 psi)
Max operating pressure for aluminium body	210 bar (3000 psi)
Ambient temperature range	-30 to 90 °C (-22 to 194 °F)
Fluids: Mineral-based or synthetics with lubricating properties at viscosities of 20 to 380 mm ² /s (cSt)	
MTTFd	150 years see RE 18350-51
To order manifold only, see data sheet RE 18325-85	
Other technical data	See data sheet 18350-50

* see performance graph on page 3

Solenoid operated valves, direct acting
poppet type 2-way double lock



Cartridge technical data

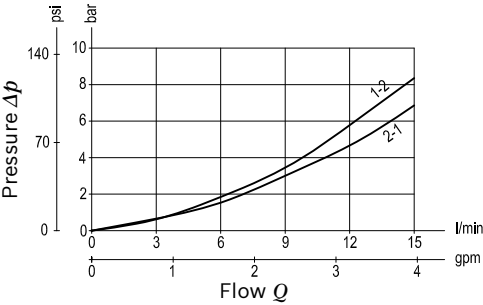
General	
Installation orientation	Unrestricted
Ambient temperature range	-30 to 90 °C (-22 to 194 °F)
Hydraulic	
Max. operating pressure	250 bar (3625 psi)
Flow range	up to 15 l/min (4 gpm)
Max. internal leakage	5 drops/min.
Fluid temperature range	-20 to 80 °C (-4 to 176 °F)
Fluids: Mineral-based or synthetics with lubricating properties at viscosities of 20 to 380 mm²/s (cSt)	
Installation torque	34 - 41 Nm (25 - 30 ft-lbs)
Recommended degree of fluid contamination	Nominal value max. 10 µm (NAS 8) ISO 4406 19/17/14
MTTFd	150 years see RE 18350-51
Special cavity	019-E see data sheet 18325-75
Other technical data	See data sheet 18350-50

Electrical	
Type of voltage	DC voltage
Coil type	D36
Supply voltage	See data sheet 18325-90
Admitted voltage tolerance: see characteristic curves and table	
Power consumption	20 W
Type of protection	See data sheet 18325-90
Note: Coils must be ordered separately	

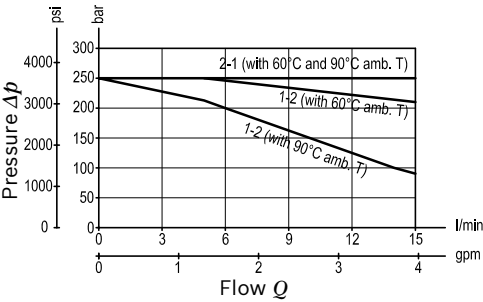
Characteristic curves

Version 31

Pressure drop



Performance limits at 100% duty cycle



Minimum switching voltage		
Flow direction	Amb. T	Voltage required
2-1	60°C	-20% of V nominal
2-1	90°C	V nominal
1-2	60°C	-10% of V nominal
1-2	90°C	V nominal

Note: in case of need of performance limits at specific different working conditions, please consult factory.

Ordering code

OS.11	31	19	X	Y	Z	W
-------	----	----	---	---	---	---

Solenoid operated valves
direct acting poppet type
2-way double lock
special cavity 019-E
Cartridge style in manifold

Manifold material

00	Aluminium
S0	Steel

Manifold port sizes

09	G 1/4
02	G 3/8

Cartridge seals and accessories options

0 = With buna seal
V = With Viton seal

Cartridge options

A = Standard
B = Push style manual override

Special cavity 019-E