

Needle restrictor, free reverse flow

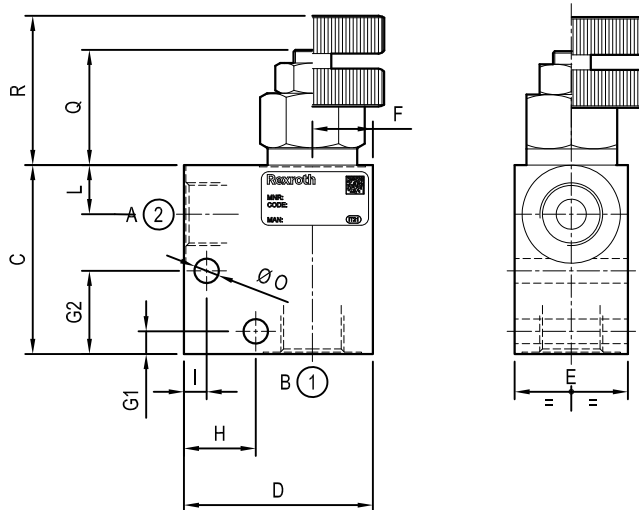
Common cavity

Cartridge style in manifold

STVU-08A

ON.03 - K - X - Y - 00 - W

Dimensions



Technical data

Max flow:	up to 40 l/min	(11 gpm)
Max operating pressure for steel body:	350 bar	(5000 psi)
Max operating pressure for aluminium body:	210 bar	(3000 psi)

To order only manifold see data sheet RE 18325-85

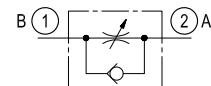


Table “Y”

[illegible]

Cartridge style

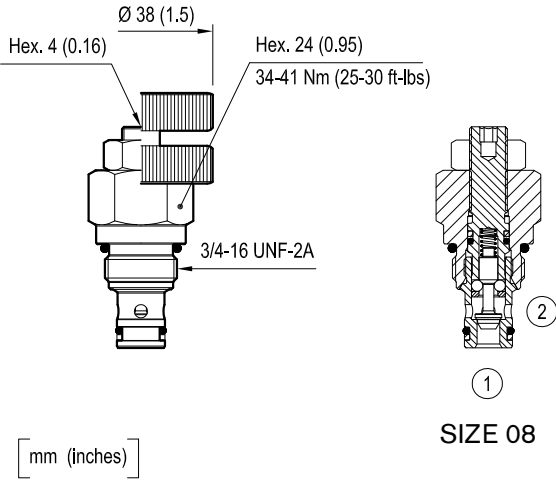


Table “K”

CARTRIDGE CODE	K						
	04	01	03	X	56	00	STVU-08A

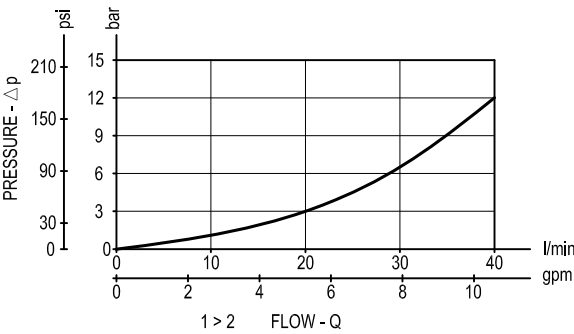
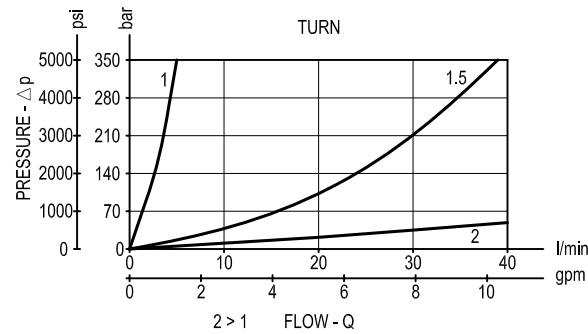
Table “X”

X	ADJUSTMENTS		
03	Leakproof hex. socket screw		
04	Handknob and locknut		

CARTRIDGE TECHNICAL DATA

Common cavity: **CA-08A-2N**
For other details see data sheet RE 18321-10

Performance graphs



Ordering code

ON.03	K	X	Y	00	W
-------	---	---	---	----	---

