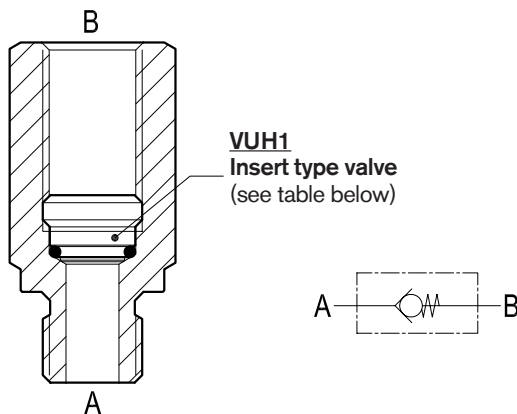


Check valves

Poppet type with insert and male-female threaded sleeve

VUH-MF

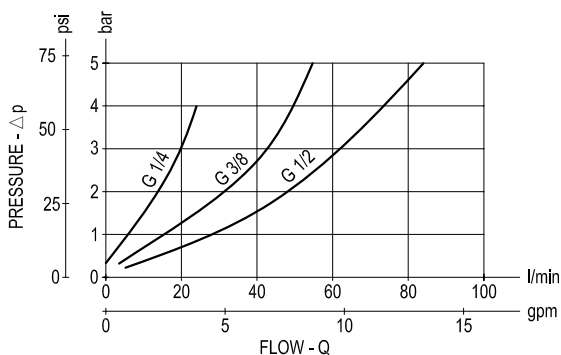
OE.U5.01.02-Y-Z



Description

This valve is composed by a sleeve with an inserted poppet type check cartridge VUH1. Flow is always allowed to pass from A to B when pressure at A rises above the spring bias pressure and the ball is pushed from the seat. The valve is normally closed (checked) from B to A. The inserted cartridge can be screwed-in or screwed-out with an Allen type key 6 or 8 mm, depending from the cartridge size.

Performance



Δp curves vs. flow in "A-B" free flow direction

As seen on the diagram, the cracking pressure is very low.

Technical data

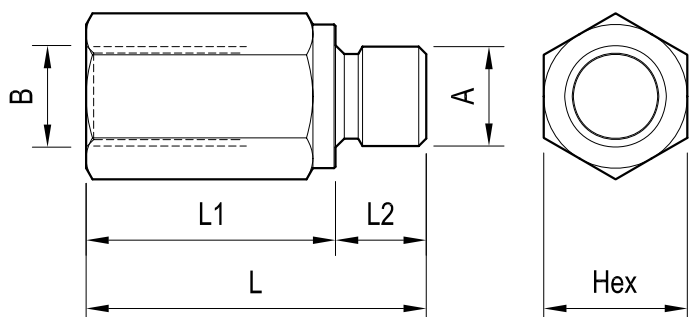
VUH1 Code	Ports A-B	Pressure P max bar (psi)	Flow Q max l/min (gpm)	Weight kg (lbs)
OT.U5.01.00.09.00	G 1/4	350 (5000)	22 (6)	0.01 (0.02)
OT.U5.01.00.02.00	G 3/8	350 (5000)	50 (13)	0.02 (0.04)
OT.U5.01.00.03.00	G 1/2	350 (5000)	80 (21)	0.02 (0.04)

Steel body, zinc plated

Advantages

- Very compact design and inline mounting for space saving.
- Mounting position is unrestricted.
- Three sizes provide great adaptability to the system.
- The inserted flow regulator cartridge can be purchased separately for easy service or for modifications to the original flow adjustment (ref. Catalogue RE 18329-61).

Dimensions



Ports size / Dimensions

Y	Ports A-B	L mm (inches)	L1 mm (inches)	L2 mm (inches)	Hex mm (inches)	Sleeve code
09	G 1/4	45 (1.77)	33 (1.30)	12 (0.47)	19 (0.75)	OC.51.01.068
02	G 3/8	47.5 (1.87)	35.5 (1.40)	12 (0.47)	22 (0.87)	OC.51.01.069
03	G 1/2	55.5 (2.19)	41.5 (1.63)	14 (0.55)	27 (1.06)	OC.51.01.070

Fitting tool dimension

Z	Cracking pressure bar (psi)
00	<0.5 (<7)

VUH1 code thread	ØF	L	L1	L2	ØD	Ød	Inst. torque	Tool code
OT.U5.01.00.09.00 G 1/4	11.3 (0.45)	120 (4.72)	110 (4.33)	60 (2.36)	8.5 (0.34)	2.2 (0.09)	6 Nm (4)ft-lb	AVA17
OT.U5.01.00.02.00 G 3/8	14.9 (0.59)	120 (4.72)	108 (4.25)	80 (3.15)	10.8 (0.43)	3 (0.12)	6Nm (4)ft-lb	AVA17-01
OT.U5.01.00.03.00 G 1/2	18.6 (0.73)	120 (4.72)	108 (4.25)	80 (3.15)	14.2 (0.56)	3.8 (0.15)	10Nm (7)ft-lb	AVA17-02

More details on RE 18329-61 catalogue.

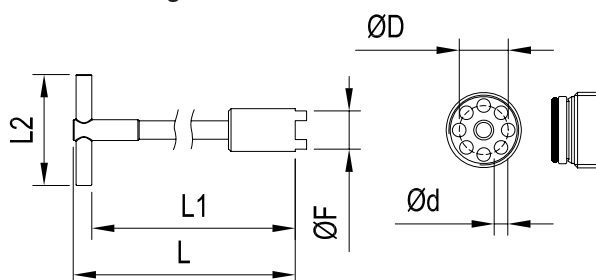
Ordering code

OE.U5.01.02	Y	Z
-------------	---	---

Poppet type with insert and male-female threaded sleeve

Cracking pressure see table "Z"

Ports size / Dimensions see table "Y"



Type	Material number
OEU501020200	R932007305
OEU501020300	R932007306
OEU501020900	R932007304

Type	Material number

Type	Material number