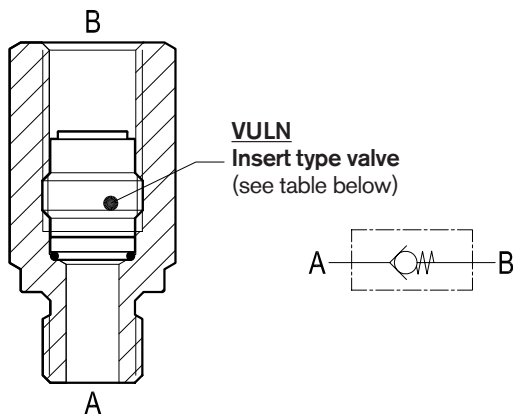


Check valves

Ball type with insert and male-female threaded sleeve

VULN-MF

OE.U4.01.02-Y-Z

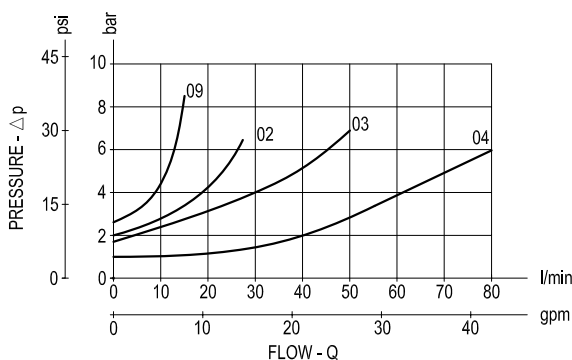


Description

This valve is composed by a sleeve with an inserted ball type check cartridge. Flow is always allowed to pass from A to B when pressure at A rises above the spring bias pressure and the ball is pushed from the seat. The valve is normally closed (checked) from B to A.

The inserted cartridge can be reached from either port in order to be screwed-in or screwed-out with an Allen type key 3-4-5-6-8 mm, depending from the cartridge size, and from the port used.

Performance



Δp curves vs. flow in "A-B" free flow direction

For cracking pressure range refer to the specific table.

Advantages

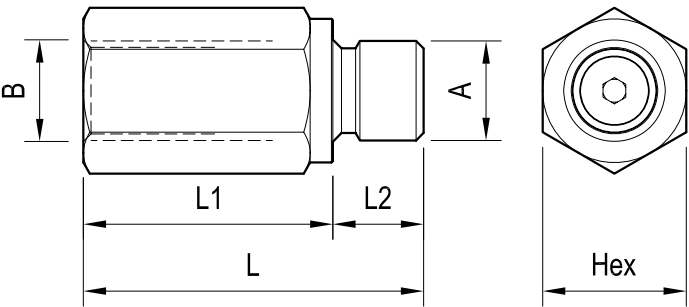
- Very compact design and inline mounting for space saving.
- Mounting position is unrestricted.
- Four sizes provide great adaptability to the system.

Technical data

VULN Code	Ports A-B	Pressure P max bar (psi)	Flow Q max l/min (gpm)	Weight kg (lbs)
0T.U4.01.00.09.00	G 1/4	210 (3000)	15 (4)	0.02 (0.04)
0T.U4.01.00.02.00	G 3/8	210 (3000)	30 (8)	0.03 (0.07)
0T.U4.01.00.03.00	G 1/2	210 (3000)	50 (13)	0.04 (0.09)
0T.U4.01.00.04.00	G 3/4	210 (3000)	80 (21)	0.07 (0.15)

Steel body, zinc plated

Dimensions



Ports size / Dimensions

Y	Ports A-B	L mm (inches)	L1 mm (inches)	L2 mm (inches)	Hex mm (inches)	Sleeve code
09	G 1/4	45 (1.77)	33 (1.30)	12 (0.47)	19 (0.75)	OC.51.01.068
02	G 3/8	47.5 (1.87)	35.5 (1.40)	12 (0.47)	22 (0.87)	OC.51.01.069
03	G 1/2	55.5 (2.19)	41.5 (1.63)	14 (0.55)	27 (1.06)	OC.51.01.070
04	G 3/4	62 (2.44)	46 (1.81)	16 (0.63)	36 (1.42)	OC.51.01.071

Z	CRACKING PRESSURE l/min (gpm)			
	G 1/4	G 3/8	G 1/2	G 3/4
00	2.3 (33.4)	1.75 (25.4)	1.75 (25.4)	0.3 (4.4)

Ordering code

OE.U4.01.02				Y	Z
Ball type with insert and male-female threaded sleeve				Cracking pressure see table "Z"	
				Ports size / Dimensions see table "Y"	

Type	Material number	Type	Material number	Type	Material number
OEU401020200	R932007260				
OEU401020300	R932007261				
OEU401020400	R932007262				
OEU401020900	R932007259				