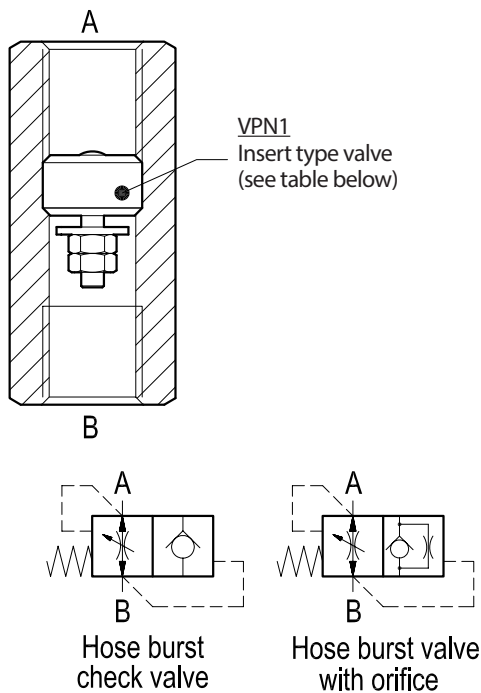


## Hose burst insert type check valves With female threaded sleeve

VPN-FF (G1/4 - G3/8)

OE.F4.01.01-Y-Z



### Description

This valve is composed by a sleeve with an inserted "Hose Burst" steel made cartridge type VPN1 (refer to RE 18329-85). Flow is always allowed to pass from A to B according to the  $\Delta p$  curves included in the Performance diagrams. The reverse flow "B" to "A", or reaction flow, is unrestricted up to the pre-set value, above which the pressure drop across the floating disc will push the disc against the valve body, and will determine immediate closing of the line in a checked, leak free mode. The valve will remain closed (checked) from B to A until pressure is removed from the B, or until the A port pressure equalizes the B pressure. To help re-setting, or shorten the time for the disc to go back to the open position, the inserted cartridge can be supplied with the Extra Orifice "F" on request. The orifice diameter has to be specified when ordering (refer to table "Z"). Precision machining and hardening processes allow virtually leak free performance in the checked condition.

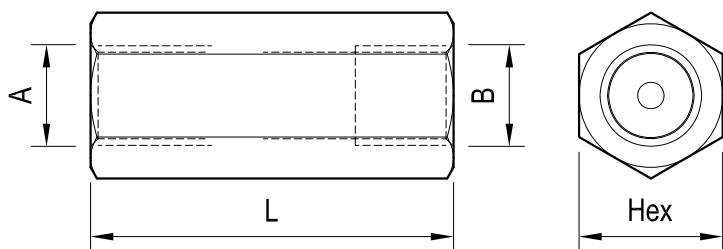
### Technical data

VPN1 Code	Ports A-B	Pressure P max bar (psi)	Flow Q max l/min (gpm)	Weight kg (lbs)
0T.F4.01.03.09...	G 1/4	315 (4568)	4-25 (1-7)	0.01 (0.02)
0T.F4.01.03.02...	G 3/8	315 (4568)	6-50 (2-13)	0.03 (0.07)

Steel body, zinc plated

Special, Metric, UNF: sizes available on request.

Dimensions



Ports size / Dimensions

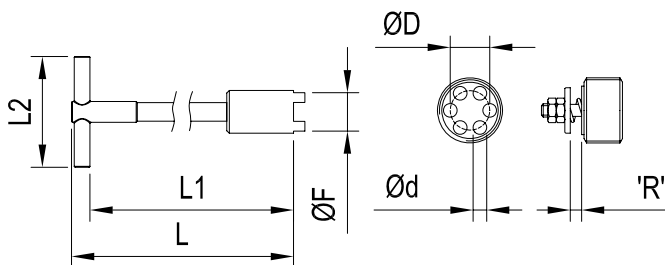
Y	Ports A-B	L mm (inches)	Hex mm (inches)	Sleeve code
09	G 1/4	48 (1.89)	19 (0.75)	OC.51.02.014
02	G 3/8	52 (2.05)	22 (0.87)	OC.51.02.010

Fitting tool dimension

Z	ORIFICE DIAMETER mm (inches)		
00	no orifice	06	1 (0.039)
01	0.5 (0.019)	07	1.2 (0.047)
02	0.6 (0.023)	08	1.3 (0.051)
03	0.7 (0.027)	09	1.5 (0.059)
04	0.8 (0.031)	10	1.9 (0.074)
05	0.9 (0.035)	11	2 (0.078)

VPN1 code thread	ØF	L	L1	L2	ØD	Ød	Inst. torque	Tool code
OT.F4.01.03.09... G 1/4	11.3 (0.45)	120 (4.72)	110 (4.33)	60 (2.36)	8.5 (0.34)	2.4 (0.10)	2 Nm (1.5)ft-lb	AVA18
OT.F4.01.03.02... G 3/8	15 (0.59)	120 (4.72)	108 (4.25)	80 (3.15)	10.5 (0.41)	3.5 (0.14)	3 Nm (2)ft-lb	AVA18-01

'R'= GAP corresponding to the maximum desired free flow.



NOTE

The complete valve here shown is supplied with the Gap "R" Factory adjusted at 0.5 mm, corresponding to:  
 Approx. (10–14) l/min, for size G1/4, and  
 Approx. (16–20) l/min, for size G 3/8, depending from oil viscosity.  
 For special settings consult us.

Important: the pre-set R gap corresponds to the theoretical shut-off flow: please make sure that the selected shut-off flow is at least 50% higher than the actual Maximum Working Flow, in order to prevent inadvertent valve shutting with cold oil.

Applications

In a variety of cases when oil flow must be immediately stopped in case of failure of an hose in order to prevent the load from falling freely. The smallest size G 1/4 is often employed in pressure pick-up lines from cylinders.

Ordering code

OE.F4.01.01	Y	Z
-------------	---	---

With female threaded sleeve

Orifice diameter see table "Z"

Ports size / Dimensions see table "Y"

Type	Material number	Type	Material number	Type	Material number
OEF401010200	R931001665	OEF401010210	R932007235	OEF401010908	R932007223
OEF401010201	R932007227	OEF401010211	R932007236	OEF401010909	R932007224
OEF401010202	R932007228	VPN3.G14.00.000	R931001660	OEF401010910	R932007225
OEF401010203	R932007229	OEF401010901	R932007216	OEF401010911	R932007226
OEF401010204	R932007230	OEF401010902	R932007218		
OEF401010205	R932007231	OEF401010903	R932007219		
OEF401010206	R931001669	OEF401010904	R932007220		
OEF401010207	R932007232	OEF401010905	R932007221		
OEF401010208	R932007233	OEF401010906	R931001663		
OEF401010209	R932007234	OEF401010907	R920207222		