

Directional control valves pneumatic operated poppet 2-way normally open Special cavity, 021-E

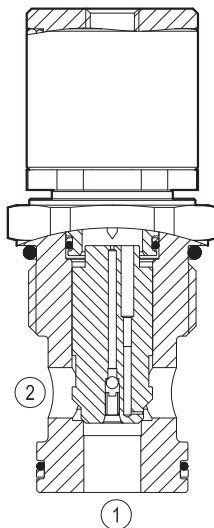
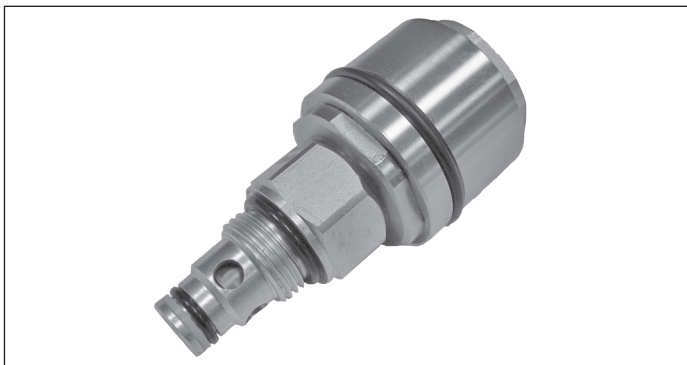
VPI-8A-2A-12-NA

OD.65 - X - 21.14.00

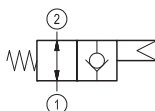
RE 18326-77

Edition: 09.2023

Replaces: 06.2021



▼ Version 06



Technical data

| General | |
|---|---|
| Weight | 0.27 kg (0.58 lbs) |
| Installation orientation | Optional |
| Ambient temperature range | -30 to 60 °C (-22 to 140 °F) |
| Hydraulic | |
| Max. operating pressure | 350 bar (5000 psi) |
| Max. flow | 150 l/min (40 gpm) |
| Max. internal leakage | 20 drops/min. |
| Fluid temperature range | -20 to 80 °C (-4 to 176 °F) |
| Fluids: Mineral-based or synthetics with lubricating properties at viscosities of 20 to 380 mm²/s (cSt) | |
| Installation torque | 130-150 Nm (96-111 ft-lbs) |
| Recommended degree of fluid contamination | Nominal value max. 25 µm (NAS 8) ISO 4406 19/17/14 |
| MTTFD | 150 years see RE 18350-51 |
| Special cavity | 021-E see 18325-75 |
| Lines bodies and standard assemblies | Please refer to section "Hydraulic integrated circuit" or consult factory |
| Seal kit – version 06 | code RG21E201052010 material no. R934003566 |
| Other technical data | See data sheet 18350-50 |

| | | |
|----------------|-----------|---------------|
| Pilot pressure | bar (psi) | Max. 15 (218) |
| | bar (psi) | Min. 4 (58) |

Ordering code

Directional control valves
pneumatic operated poppet 2-way
normally open

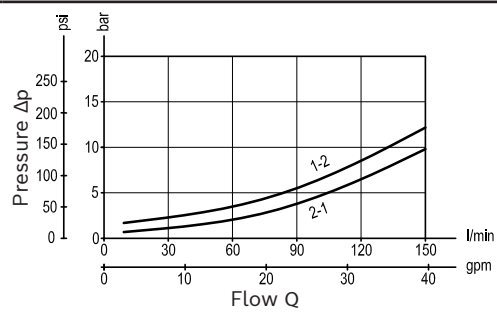
= 06

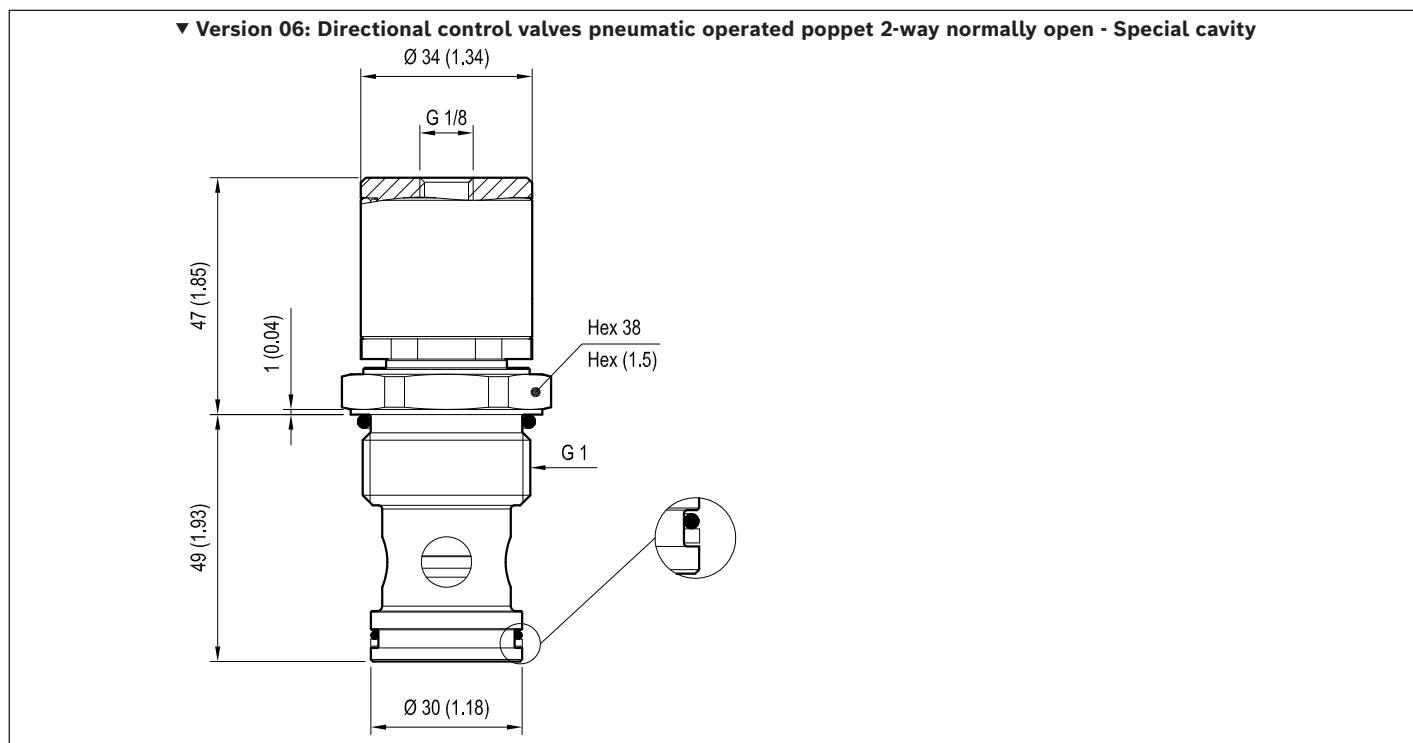
Special cavity: 021-E

Preferred types

| Type | Material number |
|----------------|-----------------|
| OD650621140000 | R934001452 |
| | |
| | |

| Type | Material number |
|------|-----------------|
| | |
| | |
| | |

Characteristic curves**Version 06**

Dimensions**Bosch Rexroth Oil Control S.p.A.**

Via Leonardo da Vinci 5
P.O. Box no. 5
41015 Nonantola – Modena, Italy
Tel. +39 059 887 611
Fax +39 059 547 848
compact-hydraulics-cv@boschrexroth.com
www.boschrexroth.com/compacthydraulics

© This document, as well as the data, specifications and other information set forth in it, are the exclusive property of Bosch Rexroth Oil Control S.p.A.. It may not be reproduced or given to third parties without its consent. The data specified above only serve to describe the product. No statements concerning a certain condition or suitability for a certain application can be derived from our information. The information given does not release the user from the obligation of own judgment and verification. It must be remembered that our products are subject to a natural process of wear and aging. Subject to change.