

Relief, direct acting guided poppet type Special cavity, M14x1

MHDBD 04

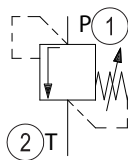
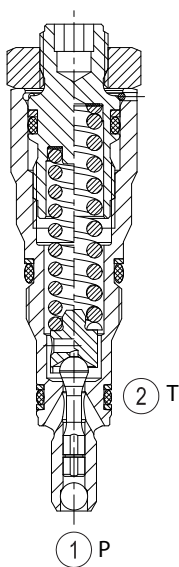
RE 18318-70

Edition: 08.2024



Description

Flow is blocked from 1 to 2 until pressure increases to meet the selected valve setting, lifting the poppet from its seat and allowing relief flow through port 2 to tank. Pressure at port 2 is additive to the relief setting of the valve.



Technical data

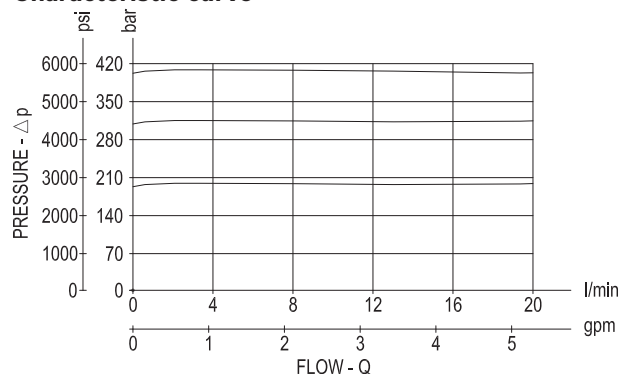
Max. operating pressure port 1 (P)	420 bar (6091 psi)
Max. pressure admitted port 2 (T)	50 bar (725 psi)
Max. flow	20 l/min (5,3 gpm)
Max. internal leakage ¹⁾	2 cc/min.
Fluid temperature range	-20 to 80 °C (-68 to 176 °F)
Installation torque	23 - 28 Nm (17 - 21 ft-lbs)
Weight ²⁾	0.18 kg (0.40 lbs)
MTTFD	150 years see RE 18350-51
Special cavity	R/DBD.4K
Seal kit FKM ³⁾	Code: RG04R2070620100 R930094879
Fluids	Mineral-based or synthetics with lubricating properties at viscosities of 10 to 800 mm ² /s (cSt)
Recommended degree of fluid contamination	Nominal value max. 10µm (NAS 8) / ISO 4406 20/18/15
Installation position	No restrictions
Other Technical Data	See data sheet 18350-50

1) At 80% of pressure setting

2) Standard version 03 type

3) Only external seals for 10 valves

Characteristic curve



Curves referred to the version with standard spring guide

Ordering code

MHDBD 04

K

2

1X

-

-

DA

-

Pressure relief valve,
direct operated

Screw-in cartridge valve

Socket screw with internal hexagon

Component series 10 to 19 (10 to 19: unchanged
installation and connection dimensions)

167 =

new spring retainer (for
noise minimisation)

Cavity M14x1

V =

M =

Sealing Material

FKM

NBR

200 =

315 =

420 =

Pressure range

0-200

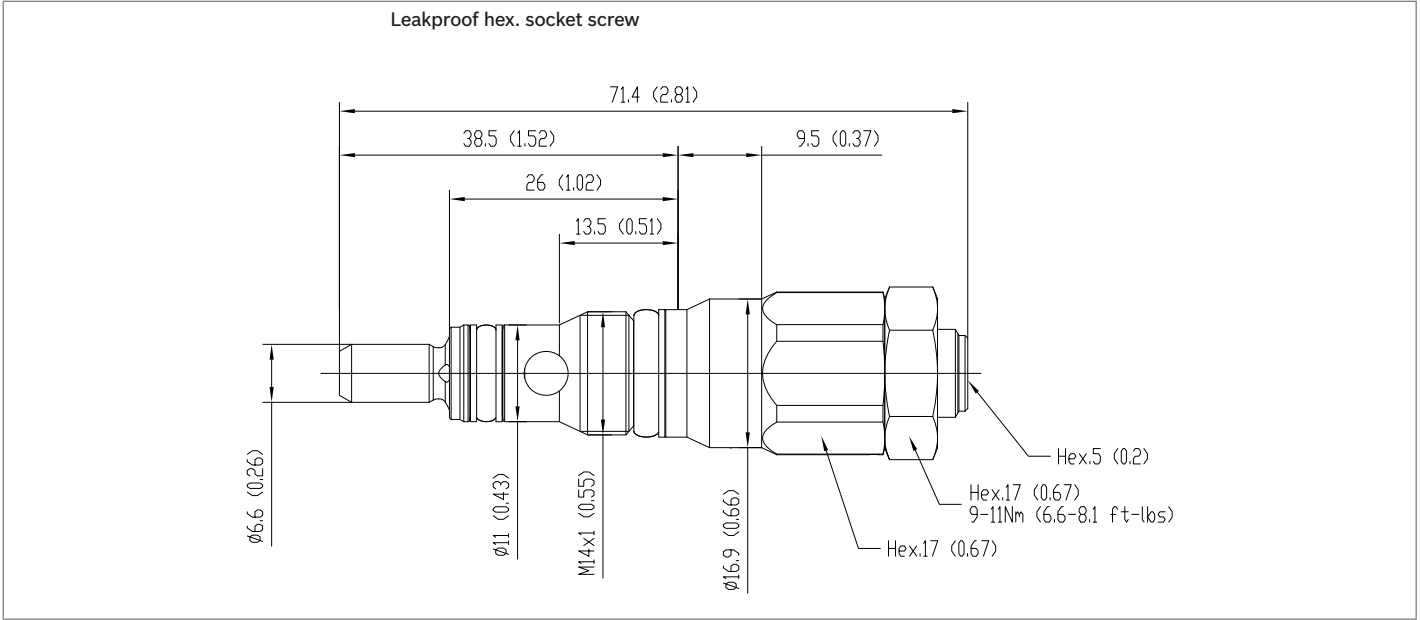
0-315

0-420

Type	Material number
MHDBD 04 K2-1X/200VDA	R900859547
MHDBD 04 K2-1X/315VDA	R900859551

Type	Material number
MHDBD 04 K2-1X/420VDA-167	R901385536
MHDBD-04-K2-1X/420VDA	R900853518

Dimensions



Bosch Rexroth Oil Control S.p.A.
Via Leonardo da Vinci 5
P.O. Box no. 5
41015 Nonantola – Modena, Italy
Tel. +39 059 887 611
Fax +39 059 547 848
compact-hydraulics-cv@boschrexroth.com
www.boschrexroth.com/compacthydraulics

© This document, as well as the data, specifications and other information set forth in it, are the exclusive property of Bosch Rexroth Oil Control S.p.a.. It may not be reproduced or given to third parties without its consent. The data specified above only serve to describe the product. No statements concerning a certain condition or suitability for a certain application can be derived from our information. The information given does not release the user from the obligation of own judgment and verification. It must be remembered that our products are subject to a natural process of wear and aging. Subject to change.