

Relief, direct acting poppet type,
differential area

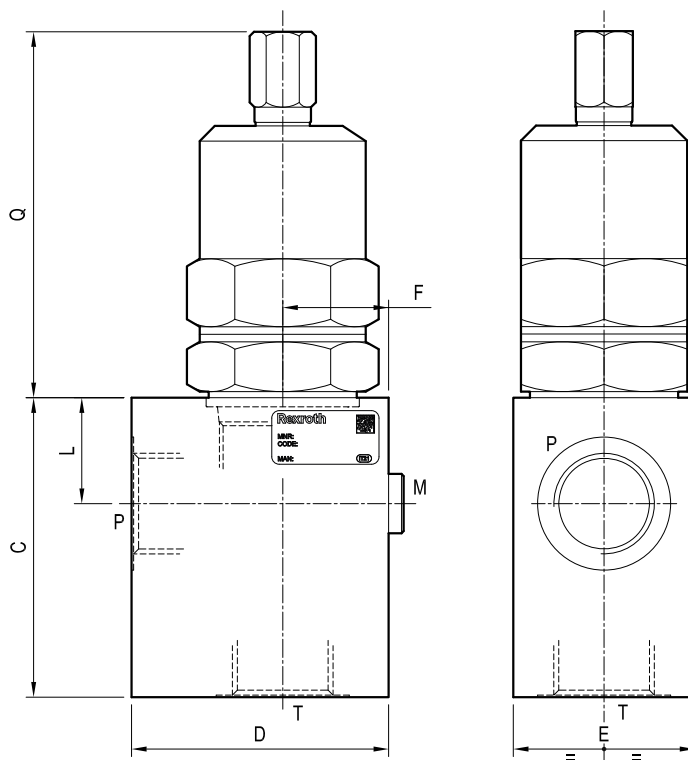
Special cavity

Cartridge style in manifold

VSDC-350

05.12.04 - X - Y - Z

Dimensions



Technical data

Max flow:	up to 350 l/min	(93 gpm)
Max operating pressure:	210 bar	(3000 psi)

Standard manifolds in high strength **aluminium**.

For working pressure up to 350 bar (5000 psi) and for fatigue applications with any working pressure, steel manifolds are available upon request.

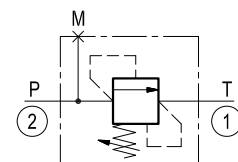
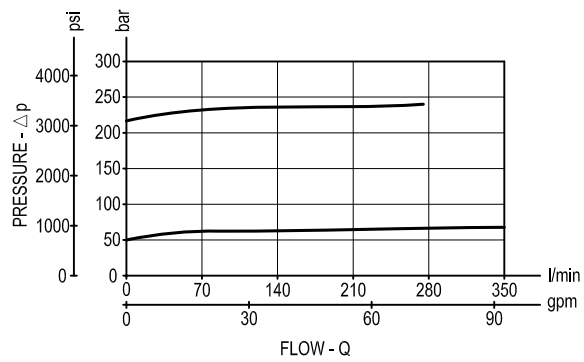


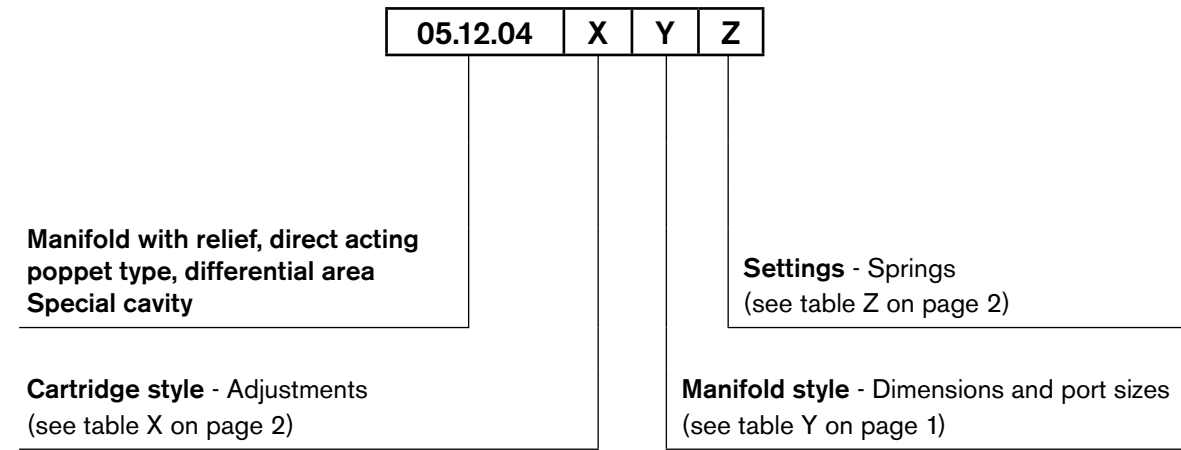
Table “Y”

[illegible]

Performance graph



Ordering code



Preferred types (readily available)

Type	Material number	Type	Material number
051204030505000	R930000252		
051204030520000	R930001259		
051204030605000	R930001260		
051204030620000	R930001261		

Further types available by request