

Relief, direct acting guided poppet type Common cavity, Size 10

VMD1.040

OT.M1.03 - X - 99 - Z

RE 18318-30

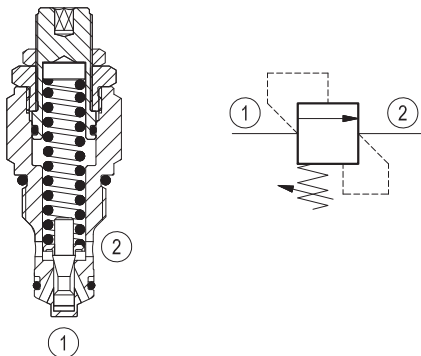
Edition: 07.2024

Replaces: 04.2024



Description

Flow is blocked from 1 to 2 until pressure increases to meet the selected valve setting, lifting the poppet from its seat and allowing relief flow through port 2 to tank. Pressure at port 2 is additive to the relief setting of the valve. The unique Bosch Rexroth Oil Control poppet design provides enhanced stability at all flows and pressures.



Technical data

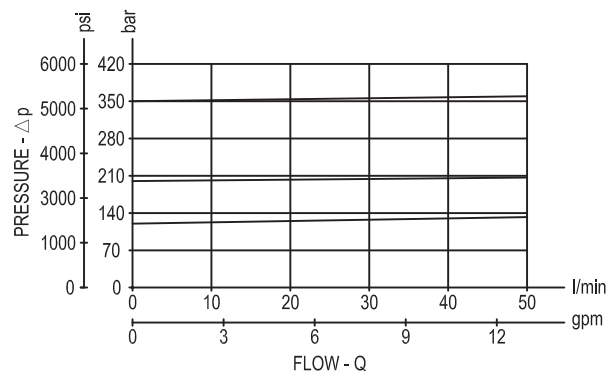
Max. operating pressure port 1	350 bar (5000 psi)
Max. pressure admitted port 2	140 bar (2000 psi)
Max. flow	50 l/min. (13 gpm)
Max. internal leakage ¹⁾	5 drops/min.
Fluid temperature range	-30 to 100 °C (-22 to 212 °F)
Installation torque	55 - 65 Nm (41 - 48 ft-lbs)
Weight	0.17 kg (0.38 lbs)
MTTFD	150 years see RE 18350-51
Cavity	CA-10A-2N (see data sheet 18325-70)
Lines bodies and standard assemblies	Please refer to section "Hydraulic integrated circuit" or consult factory
Seal kit ²⁾	Code: RG10A2010520100 material no: R901111363
Fluids	Mineral-based or synthetics with lubricating properties at viscosities of 10 to 500 mm ² /s (cSt)
Recommended degree of fluid contamination	Nominal value max. 10µm (NAS 8) / ISO 4406 20/18/15
Installation position	No restrictions
Salt spray test to DIN EN ISO 9227:2017-07 ³⁾	500h
Other Technical Data	See data sheet 18350-50

1) At 80% of pressure setting.

2) Only external seals for 10 valves

3) Option available with 720 h NSS test upon request - consult factory

Characteristic curve



Ordering code

0T.M1.03	X	99	Z	00	*
----------	---	----	---	----	---

Relief, direct acting guided

Adjustments

03 Leakproof hex. socket screw

Futher adjustment options available upon request.
Contact factory for authorized representative
for ordering code

Common cavity, Size 10

Series 0/A to L
unchanged performances and dimensions

Version and options standard

SPRINGS			
	Adj. press. range bar (psi)	Pressure increase bar/turn (psi/turn)	Std. setting bar (psi) Q=5 l/min
10	25-120 (350-1750)	16.5 (239)	100 (1450)
20	40-200 (580-2900)	26.5 (384)	180 (2600)
35	200-350 (2900-5000)	51 (740)	350 (5000)

Note: Special settings available, also with tamper proof cap option.
Contact factory authorized representative for ordering code.

Preferred types

Type	Material number	Type	Material number
OTM103039910000	R901099401		
OTM103039920000	R901099402		
OTM103039935000	R931002103		

Dimensions

