

Intermediate Elements with 2 way compensator, and with LS connections

TI-C2-__-__

RE 18301-28

Edition: 02.2016

Replaces: 07.2012



Description

The sandwich plate design directional valve elements TI-C2-__-... basically consist of a stackable housing with a 2 way compensator controlled by the LS pressure signal. The normally open compensator maintains a constant pressure difference between the P1 (outlet) line and the LS pressure; the result is a constant oil flow to the P1 port for the downstream operators, independently from the working pressure.

The excess oil must be unloaded to tank through a relief valve.

The stackable housing is made of Yellow Zinc plated (Cr+3) Cast Iron.

Technical data

General		
Valve element TI-C2-__-	kg (lbs)	1.7 (3.75)
Ambient Temperature	°C (°F)	-20....+50 (-4....+122) (NBR seals)
Hydraulic		
Maximum pressure	bar (psi)	310 (4500)
Maximum inlet flow	l/min (gpm)	30 (7.9)
Hydraulic fluid		Mineral oil based hydraulic fluids HL (DIN 51524 part 1).
General properties: it must have physical lubricating and chemical properties suitable for use in hydraulic systems such as, for example:		Mineral oil based hydraulic fluids HLP (DIN 51524 part 2). For use of environmentally acceptable fluids (vegetable or polyglycol base) please consult us.
Fluid Temperature	°C (°F)	-20....+80 (-4....+176) (NBR)
Permissible degree of fluid contamination		ISO 4572: $\beta_{x \geq 75} X = 12 \dots 15$ ISO 4406: class 20/18/15 NAS 1638: class 9
Viscosity range	mm ² /s	5....420

Note

For applications with different specifications consult us

Ordering details

01	02	03	04
TI	-	C2	-
		M0	-
			00

Family

01	Intermediate Elements	TI
----	-----------------------	-----------

Configuration

02	with 2 way compensator, and with LS connections	C2
----	---	-----------

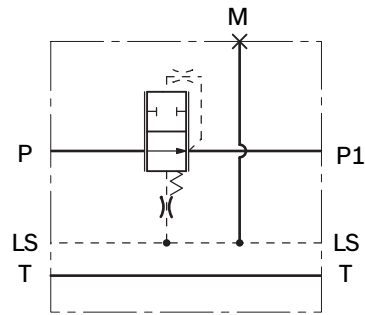
Compensator spring

03	Setting 6 bar (87 psi)	M0
----	------------------------	-----------

Version

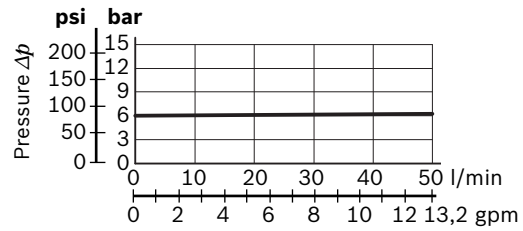
04	Standard	00
----	----------	-----------

Symbol

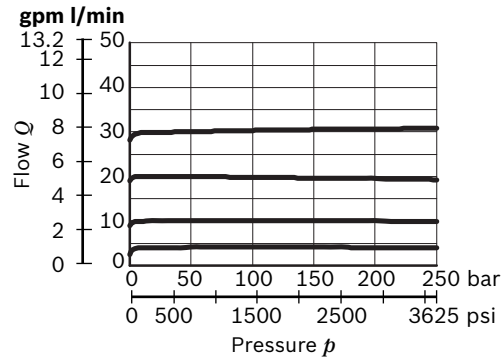


Characteristic curves

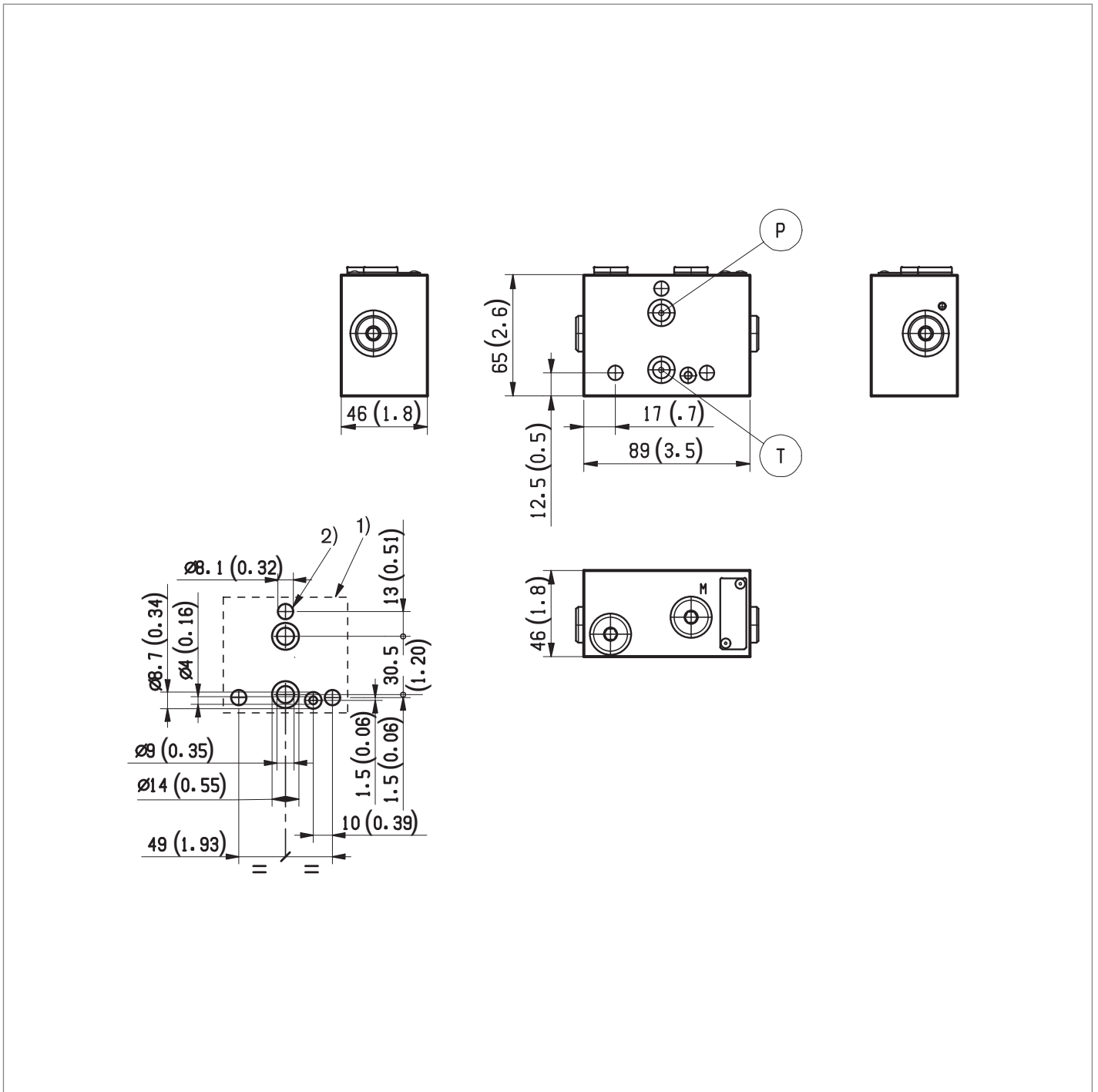
Pressure function



Compensated flow curves



External dimensions and fittings



- 1 Flange specifications for coupling to ED intermediate elements.
- 2 For tie rod and tightening torque information see data sheet RE 18301-90.

Bosch Rexroth Oil Control S.p.A.

Oleodinamica LC Division
Via Artigianale Sedrio, 12
42030 Vezzano sul Crostolo
Reggio Emilia - Italy
Tel. +39 0522 601 801
Fax +39 0522 606 226 / 601 802
compact-hydraulics-cdv@boschrexroth.com
www.boschrexroth.com/compacthydraulics

© This document, as well as the data, specifications and other information set forth in it, are the exclusive property of Bosch Rexroth Oil Control S.p.a.. It may not be reproduced or given to third parties without its consent. The data specified above only serve to describe the product. No statements concerning a certain condition or suitability for a certain application can be derived from our information. The information given does not release the user from the obligation of own judgment and verification. It must be remembered that our products are subject to a natural process of wear and aging.
Subject to change.