

Intermediate elements with check valves for emergency pump

TI-00-__-

RE 18301-25

Edition: 02.2016

Replaces: 07.2012



Technical data

General		
Weight TI-00-PT-..	kg (lbs)	0.54 (1.19)
Weight TI-00-0P-..	kg (lbs)	0.52 (1.15)
Weight TI-00-0T-..	kg (lbs)	0.52 (1.15)
Ambient Temperature	°C (°F)	-20....+50 (-4....+122) (NBR seals)
Hydraulic		
Maximum pressure	bar (psi)	250 (3625)
Maximum inlet flow	l/min (gpm)	50 (13.2)
Hydraulic fluid	Mineral oil based hydraulic fluids HL (DIN 51524 part 1). General properties: it must have physical lubricating and chemical properties suitable for use in hydraulic systems such as, for example:	
	Mineral oil based hydraulic fluids HLP (DIN 51524 part 2). For use of environmentally acceptable fluids (vegetable or polyglycol base) please consult us.	
Fluid Temperature	°C (°F)	-20....+80 (-4....+176) (NBR)
Permissible degree of fluid contamination	ISO 4572: $\beta_{x \geq 75} X = 12 \dots 15$ ISO 4406: class 20/18/15 NAS 1638: class 9	
Viscosity range	mm ² /s	5....420

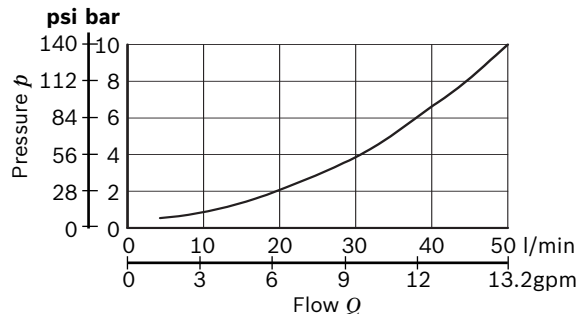
Description

The intermediate elements TI-00-__- are designed to be fitted between two directional valve elements. They are available with check valve in (P) line, or in (T) line, or in both (P) and (T) line.

With the check valve on (P) line, they are normally fitted to allow free flow from (P) to (P1) and prevent reverse flow from (P1) to (P).

With the check valve on (T) line, they are normally fitted to allow free flow from (T1) to (T), and to prevent reverse flow (T) to (T1).

Pressure drop through the check valves P>P1 and T1>T



Note

For applications with different specifications consult us

Ordering details

01	02	03	04	05
TI	-	00	-	01
				AL

Family

01	Intermediate Elements	TI
----	-----------------------	-----------

Configuration

02	With checking valves for emergency pump	00
----	---	-----------

Check valve position

03	On pressure line P	0P
	On tank line T	0T
	On both lines P and T	PT

Cracking pressure

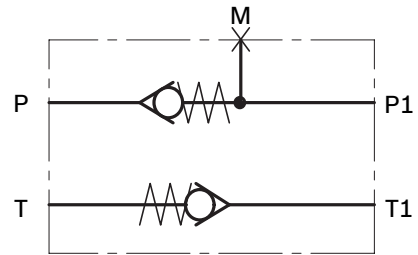
04	1 bar (14,5 psi)	01
----	------------------	-----------

Material

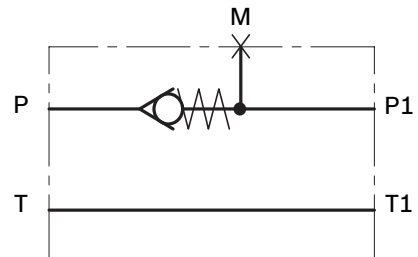
05	Aluminium	AL
----	-----------	-----------

Symbols

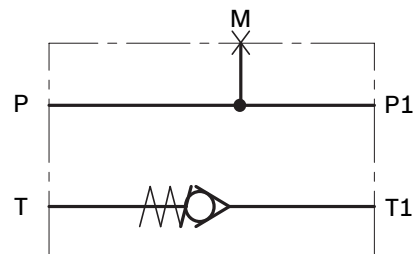
TI-00-PT



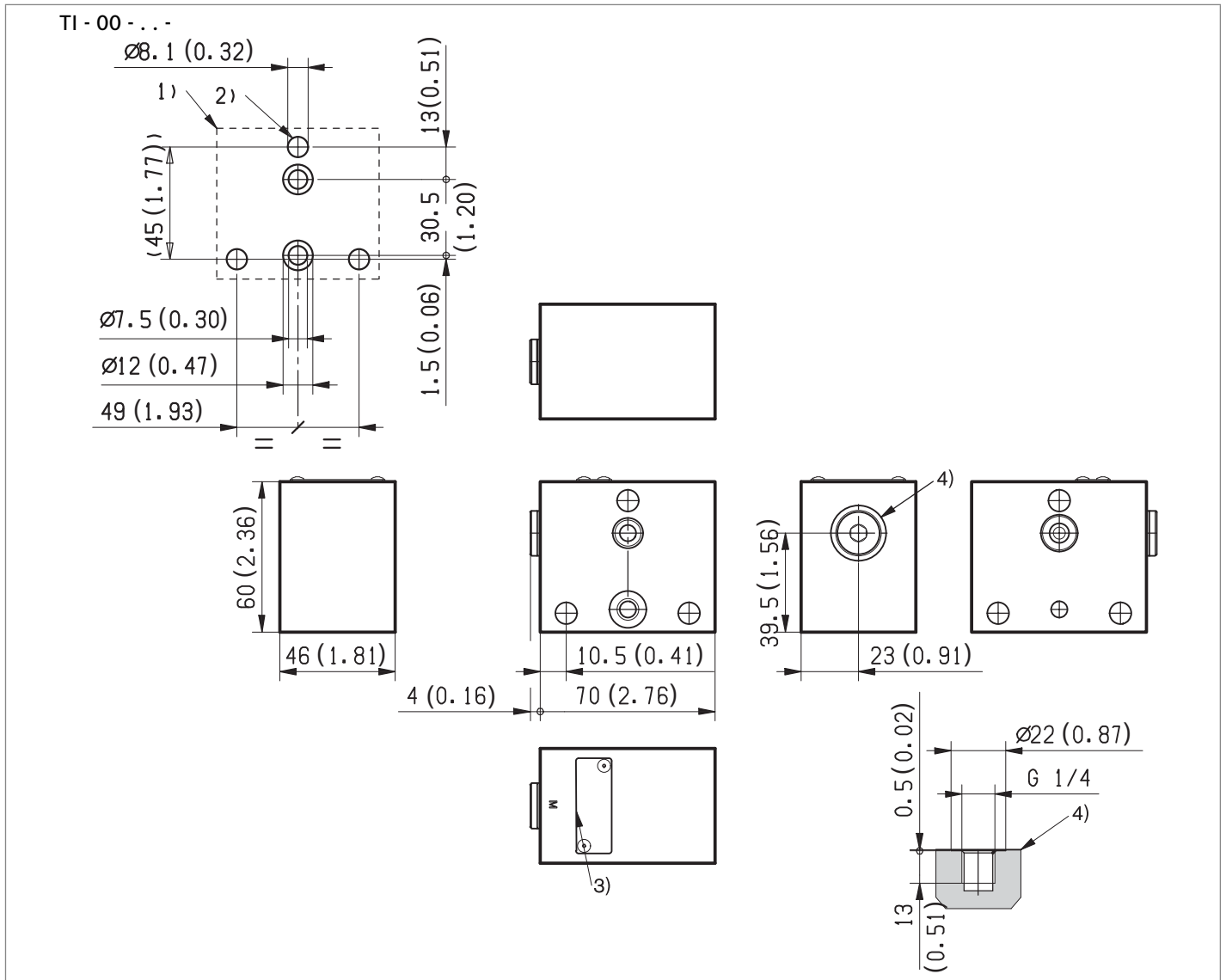
TI-00-0P



TI-00-0T



External dimensions and fittings



- 1 Flange specifications for coupling to ED intermediate elements.
- 2 For tie rod and tightening torque information see data sheet RE 18301-90.

- 3 Identification label.
- 4 Test point for pressure gauge connection (plugged).

Bosch Rexroth Oil Control S.p.A.

Oleodinamica LC Division
Via Artigianale Sedrio, 12
42030 Vezzano sul Crostolo
Reggio Emilia - Italy
Tel. +39 0522 601 801
Fax +39 0522 606 226 / 601 802
compact-hydraulics-cdv@boschrexroth.com
www.boschrexroth.com/compacthydraulics

© This document, as well as the data, specifications and other information set forth in it, are the exclusive property of Bosch Rexroth Oil Control S.p.a.. It may not be reproduced or given to third parties without its consent. The data specified above only serve to describe the product. No statements concerning a certain condition or suitability for a certain application can be derived from our information. The information given does not release the user from the obligation of own judgment and verification. It must be remembered that our products are subject to a natural process of wear and aging.
Subject to change.