

Adaptor plates

EDG/RM10 - EDG/M4-12

RE 18300-18

Edition: 08.2021



Description

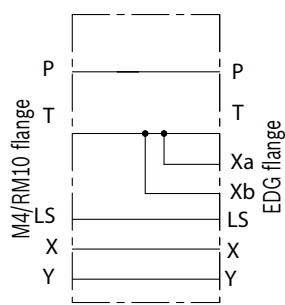
The Intermediate plate allows the hydraulic connection between EDG Compact Directional Valve family and RM10 family. P, T and LS lines from EDG flange pattern are directly connected to the P T channels of RM10 family.

Available versions are two:

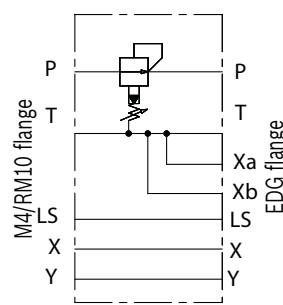
- ADAPTOR PLATE RM10-EDG LP, without any additional cartridge
- ADAPTOR PLATE RM10-EDG HP, without any additional cartridge
- ADAPTOR PLATE RM10-EDG HP VRPP-12A-35, with pressure reducing cartridge on P line

Material: the body can be made of Black Anodized Aluminium (AL), or of Yellow Zinc plated (Cr+3) Cast Iron (CI).

Hydraulic Symbol



RM10-EDG LP



RM10-EDG HP VRPP-12A-35

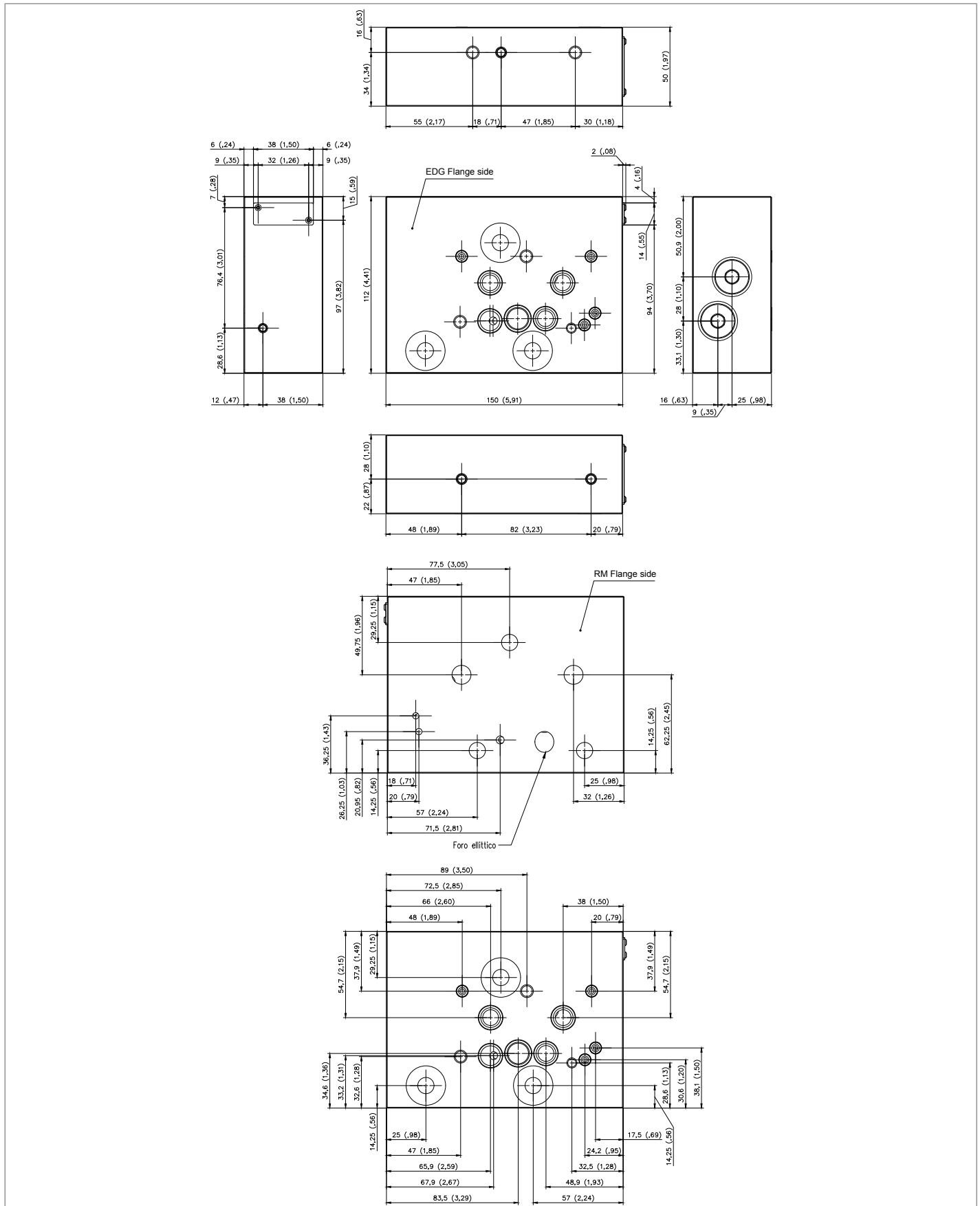
Technical data

General			
Adaptor plate		AL Version	CI Version
RM10-EDG LP	kg (lbs)	3.50 (7.71)	-
RM10-EDG HP VRPP-12A-35	kg (lbs)	2.14 (4.71)	5.50 (12.12)
Ambient Temperature	°C (°F)	-20....+90 (-4....+194) (NBR seals)	
Hydraulic			
Maximum pressure for aluminium version (AL)	bar (psi)	250 (3625) LP Version	
Maximum pressure for Cast Iron version (CI)	bar (psi)	350 (5076) HP Version	
Maximum inlet flow	l/min (gpm)	120 (31.7)	
Hydraulic fluid General properties: it must have physical lubricating and chemical properties suitable for use in hydraulic systems.		Mineral oil based hydraulic fluids HL (DIN 51524 part 1). Mineral oil based hydraulic fluids HLP (DIN 51524 part 2). For use of environmentally acceptable fluids (vegetable or polyglycol base) please consult us.	
Fluid Temperature	°C (°F)	-20....+80 (-4....+176) (NBR)	
Permissible degree of fluid contamination		ISO 4572: $\beta_x \geq 75$ X=12...15 ISO 4406: class 20/18/15 NAS 1638: class 9	
Viscosity range	mm ² /s	5....420	

Note

For applications with different specifications consult us.

External dimensions and fittings RM10-EDG



Part code	Material Number	Description	Material
48-180045	R930080087	ADAPTOR PLATE RM10-EDG LP	Alluminium
R930080940	R930080940	ADAPTOR PLATE RM10-EDG HP VRPP-12A-35	Cast Iron

Bosch Rexroth Oil Control S.p.A.

Oleodinamica LC Division
Via Artigianale Sedrio, 12
42030 Vezzano sul Crostolo
Reggio Emilia - Italy
Tel. +39 0522 601 801
Fax +39 0522 606 226 / 601 802
compact-hydraulics-cdv@boschrexroth.com
www.boschrexroth.com/compacthydraulics

© This document, as well as the data, specifications and other information set forth in it, are the exclusive property of Bosch Rexroth Oil Control S.p.a.. It may not be reproduced or given to third parties without its consent. The data specified above only serve to describe the product. No statements concerning a certain condition or suitability for a certain application can be derived from our information. The information given does not release the user from the obligation of own judgment and verification. It must be remembered that our products are subject to a natural process of wear and aging.
Subject to change.