

# Logic element, flow and pressure control, with internal pilot

Common cavity

Cartridge style in manifold

VLSP-C

OU.09 - K - X - Y - Z - W

## Dimensions

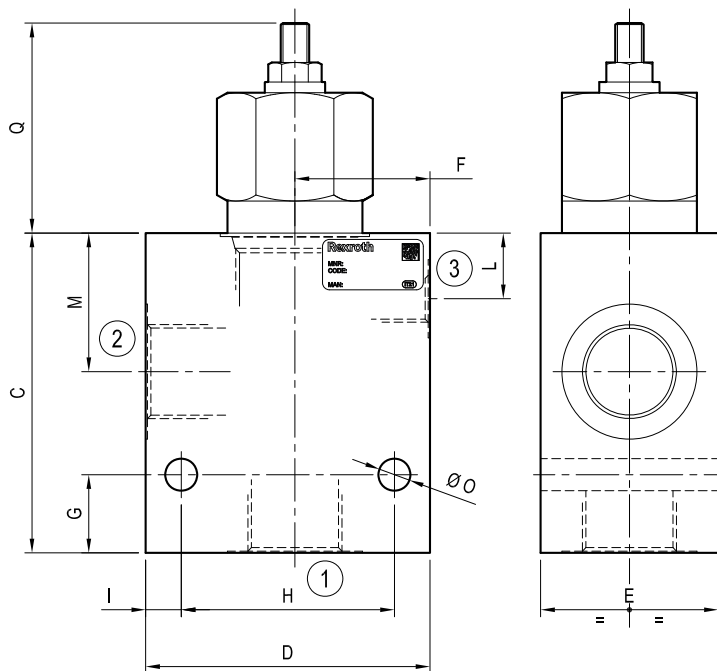
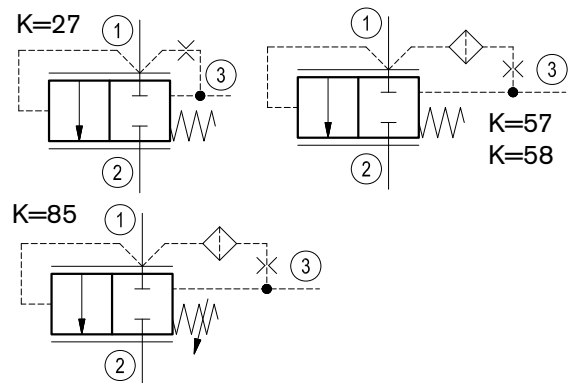


Table "Y"

## Technical data

Max flow:	up to 360 l/min	(43 gpm)
Max operating pressure for <b>steel</b> body:	350 bar	(5000 psi)
Max operating pressure for <b>aluminium</b> body:	210 bar	(3000 psi)

To order only manifold see data sheet RE 18325-85

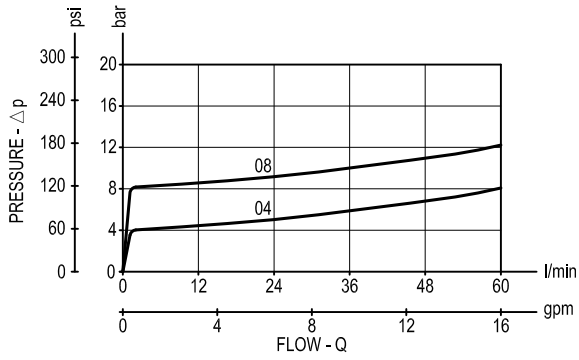


Cavity	Y	PORT SIZE		Max Flow l/min (gpm)	DIMENSIONS mm (Inches)												
		1 - 2	3		C	D	E	F	G	H	I	L	M	N	O	Q	R
SIZE 08																	
SIZE 10	02	G 3/8	G 1/4	60 (16)	70 (2.76)	60 (2.36)	35 (1.38)	30 (1.18)	15 (0.59)	45 (1.77)	7.5 (0.30)	15 (0.59)	32 (1.26)		7 (0.28)		37 (1.46)
	03	G 1/2	G 1/4		70 (2.76)	70 (2.76)	35 (1.38)	32 (1.26)	15 (0.59)	55 (2.17)	7.5 (0.30)	15 (0.59)	32 (1.26)		7 (0.28)		
SIZE 12	03	G 1/2	G 1/4	120 (32)	80 (3.15)	75 (2.95)	40 (1.58)	35 (1.38)	15 (0.59)	55 (2.17)	10 (0.39)	24 (0.95)	42 (1.65)		9 (0.35)		20 (0.79)
	04	G 3/4	G 1/4		90 (3.54)	75 (2.95)	40 (1.58)	35 (1.38)	15 (0.59)	55 (2.17)	10 (0.39)	24 (0.95)	42 (1.65)		9 (0.35)		
SIZE 16	04	G 3/4	G 1/4	200 (53)	90 (3.54)	80 (3.15)	50 (1.97)	38 (1.50)	22 (0.87)	60 (2.36)	10 (0.39)	18.5 (0.73)	39 (1.54)		9 (0.35)		59 (2.32)
	05	G 1	G 1/4		90 (3.54)	90 (3.54)	50 (1.97)	40 (1.58)	22 (0.87)	70 (2.76)	10 (0.39)	18.5 (0.73)	39 (1.54)		9 (0.35)		
SIZE 20	05	G 1	G 1/4	360 (95)	110 (4.33)	100 (3.94)	60 (2.36)	45 (1.77)	25 (0.98)	75 (2.95)	12.5 (0.49)	21 (0.83)	51 (2.01)		11 (0.43)		31 (1.22)
	06	G 1 1/4	G 1/4		110 (4.33)	100 (3.94)	60 (2.36)	45 (1.77)	25 (0.98)	75 (2.95)	12.5 (0.49)	21 (0.83)	51 (2.01)		11 (0.43)		

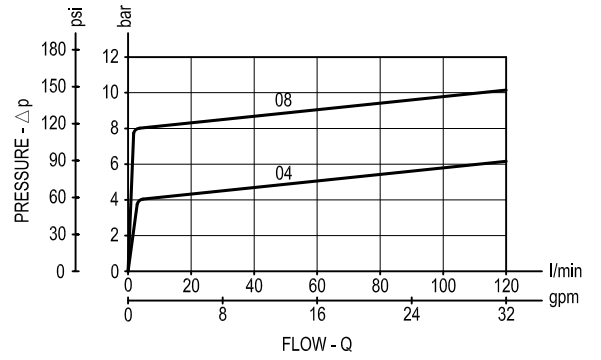


Performance graphs

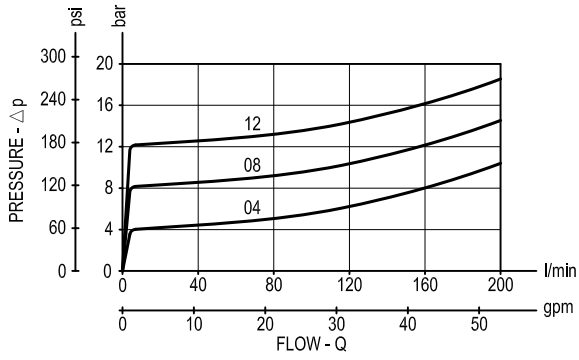
SIZE 10



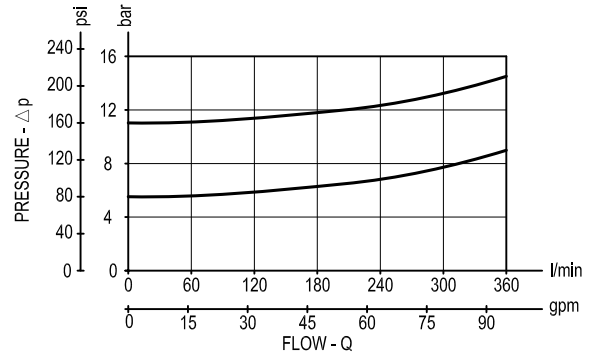
SIZE 12



SIZE 16



SIZE 20



**Ordering code**

OU.09	K	X	Y	Z	W
-------	---	---	---	---	---

**Logic element, flow and pressure control, with internal pilot.**

**Cartridge style** - Common cavity  
(see table K on page 2)

**Cartridge style** - Adjustments  
(see table X on page 2)

**Manifold material**

= 00 Aluminium manifold

= S0 Steel manifold

**Settings** - Springs  
(see table Z on page 2)

**Manifold style** - Dimensions and port sizes  
(see table Y on page 1)

**Preferred types (readily available)**

Type	Material number
OU0985030300S0	R934000948

Type	Material number

Further types available by request