

Solenoid operated valves 2-way 2-positions
Common cavity size 10
Cartridge style in manifold

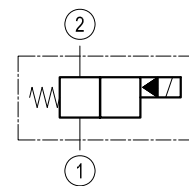
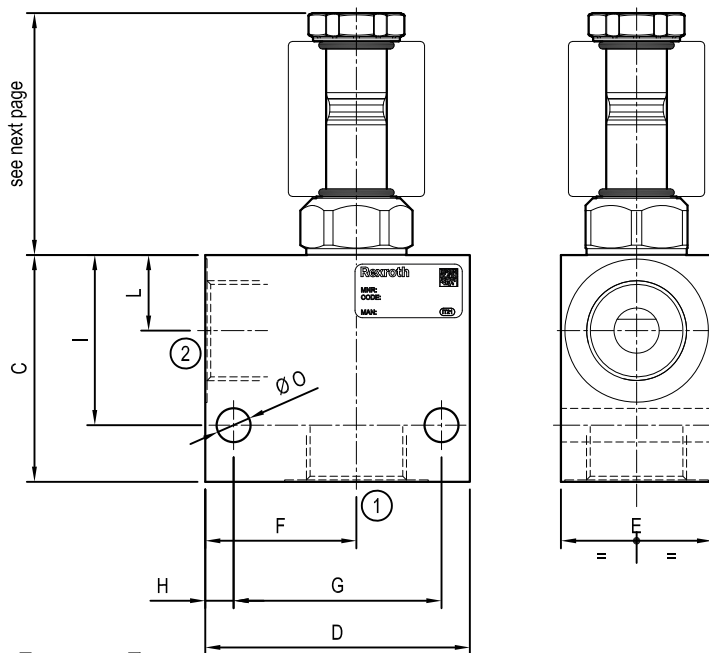
VEI-CS-16-10A

OS.15 - K -36 - X - Y - Z - W

RE 18331-62

Edition: 04.2023

Replaces: 03.2019



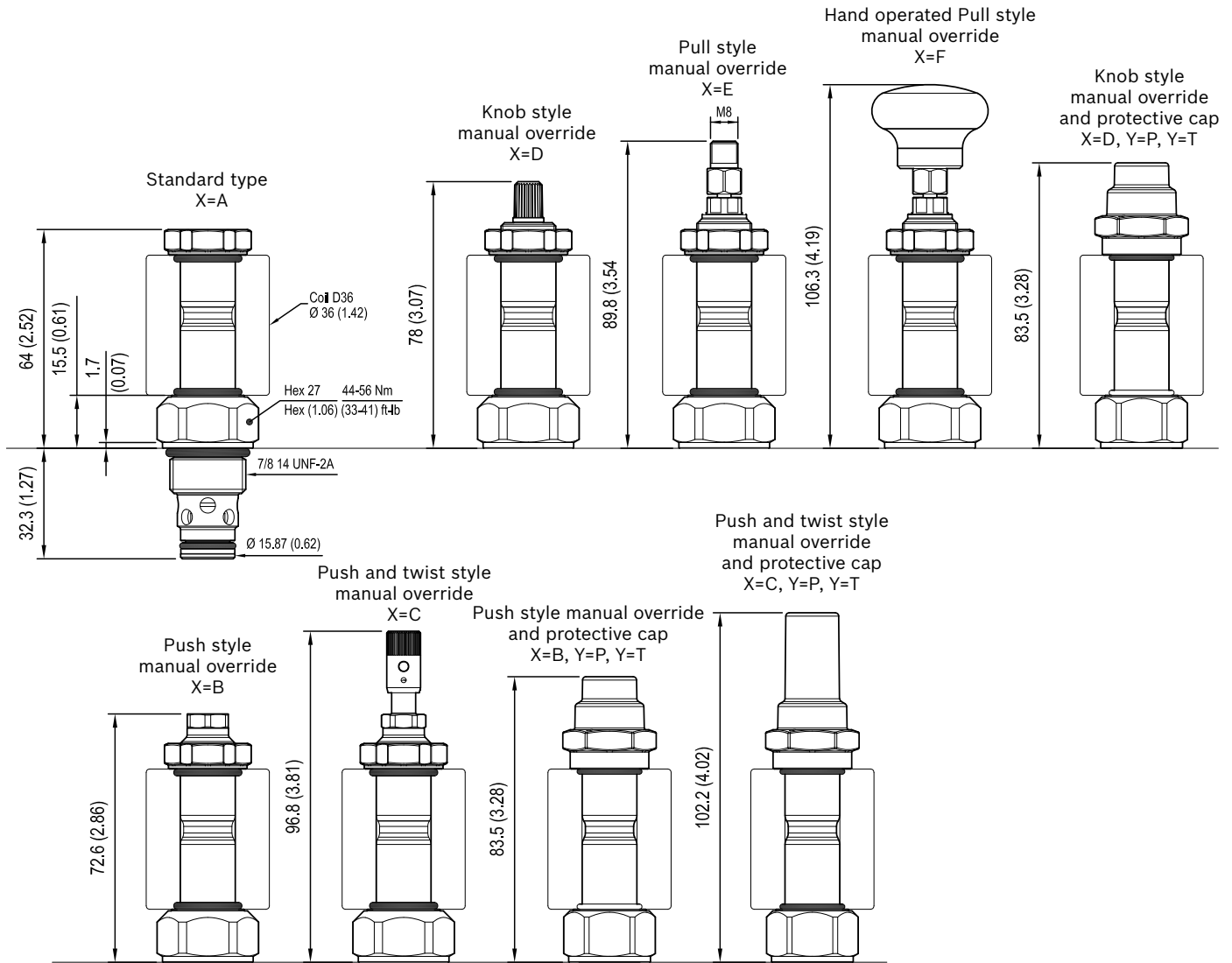
Cartridge schemes (K)

| [mm (inches)] | | A - B | C | D | E | F | G | H | I | L | O |
|-----------------|--------------|--------------|--------------|--------------|--------------|--------------|--------------|--------------|---|---|--------------|
| G 1/2 | 60 (2.36) | 60 (2.36) | 35 (1.38) | 35 (1.38) | 45 (1.77) | 7.5 (0.3) | 45 (1.77) | 19 (0.75) | | | 7.5 (0.3) |
| G 3/4 | 60 (2.36) | 70 (2.76) | 40 (1.58) | 40 (1.58) | 55 (2.17) | 7.5 (0.3) | 45 (1.77) | 20 (0.79) | | | 9 (0.35) |

Technical data

| | |
|--|------------------------------|
| Max. flow | up to 70 l/min (19 gpm) |
| Max. operating pressure for steel body | 350 bar (5000 psi) |
| Max operating pressure for aluminium body | 210 bar (3000 psi) |
| Ambient temperature range | -30 to 90 °C (-22 to 194 °F) |
| Fluids: Mineral-based or synthetics with lubricating properties at viscosities of 20 to 380 mm ² /s (cSt) | |
| MTTFd | 150 years see RE 18350-51 |
| To order manifold only, see data sheet RE 18325-85 | |
| Other technical data | See data sheet 18350-50 |

| monodirectional type | bidirectional type |
|----------------------|--------------------|
| | 03 |
| | 05 |
| | 06 |
| | 31 |
| | 32 |



Cartridge technical data

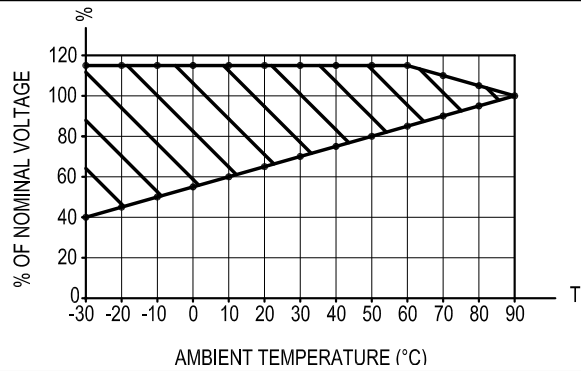
| General | |
|--|--|
| Installation orientation | Unrestricted |
| Ambient temperature range | -30 to 90 °C (-22 to 194 °F) |
| Hydraulic | |
| Max. operating pressure | 350 bar (5000 psi) |
| Flow range | 2 - 70 l/min (0.53 - 18 gpm) |
| Max. internal leakage | 20 drops/min. |
| Switching time | Opening ≤ 50 ms |
| | Closing ≤ 100 ms |
| Fluid temperature range | -20 to 80 °C (-4 to 176 °F) |
| Fluids: Mineral-based or synthetics with lubricating properties at viscosities of 20 to 380 mm ² /s (cSt) | |
| Installation torque | 44 - 56 Nm (33 - 41 ft-lbs) |
| Recommended degree of fluid contamination | Nominal value max. 10 µm (NAS 8) ISO 4406 19/17/14 |
| MTTFd | 150 years see RE 18350-51 |
| Cavity | CA-10A-2N see data sheet 18325-70 |
| Other technical data | See data sheet 18350-50 |

| Electrical | |
|---|--------------------------|
| Type of voltage | DC voltage |
| Coil type | D36 |
| Supply voltage | See data sheet 18325-90 |
| Voltage tolerance against ambient temperature | See characteristic curve |
| Power consumption | 20 W |
| Type of protection | See data sheet 18325-90 |
| Note: Coils must be ordered separately | |

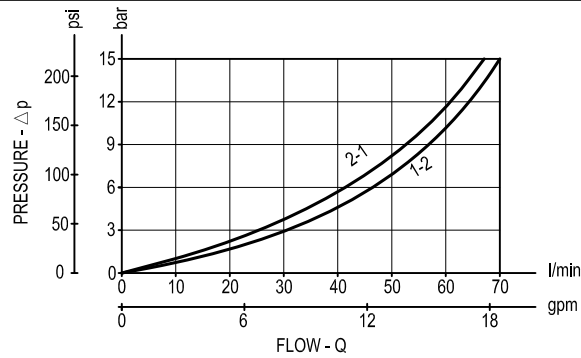
| TAB. 1 | | Manual override options (X) | | | | | |
|-------------------------|---|-----------------------------|------------|------------|--------------------|--------------------|--------------------|
| Seal and prot. cap. (Y) | | A | B | C | D | E | F |
| | O | K=all versions | K=06; K=32 | K=06; K=32 | K=03; K=05 K=31 | K=03; K=05 K=31 | K=03; K=05 K=31 |
| | V | K=all versions | K=06; K=32 | K=06; K=32 | K=03; K=05 K=31 | K=03; K=05 K=31 | K=03; K=05 K=31 |
| | P | / | K=06; K=32 | K=06; K=32 | K=03; K=05 K=31 | / | / |
| | T | / | K=06; K=32 | K=06; K=32 | K=03; K=05 K=31 | / | / |

Characteristic curves

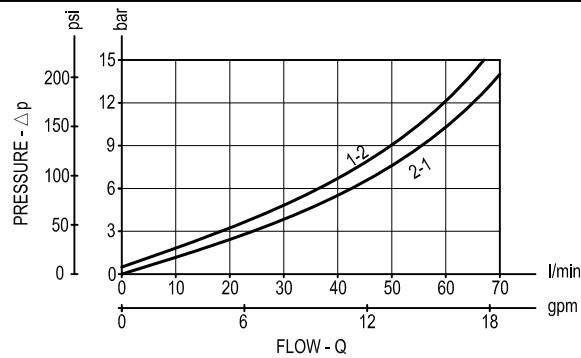
All Versions - Admissible supply voltage Vs. Ambient temperature at 100% duty cycle



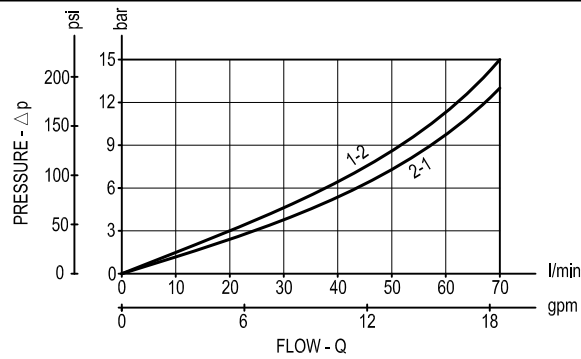
Version 03, 05



Version 31, 32



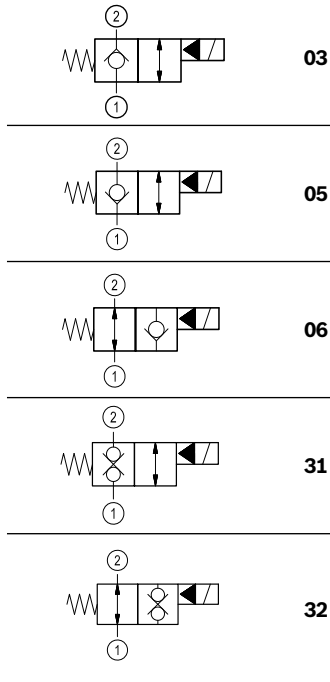
Version 06



Ordering code

| | | | | | | |
|--------------|----------|-----------|----------|----------|----------|----------|
| OS.15 | K | 36 | X | Y | Z | W |
|--------------|----------|-----------|----------|----------|----------|----------|

Solenoid operated valves
2-way 2-positions
Common cavity size 10
Cartridge style in manifold



Manifold material

00 Aluminium

S0 Steel

Manifold port sizes

03 G 1/2

04 G 3/4

Cartridge seals and accessories options

0 = With buna seal

V = With Viton seal

P = With buna seal and protective cap for override version **B, C** and **D**

T = With Viton seal and protective cap for override version **B, C** and **D**

Cartridge options

A = Standard

B = Push style manual override

C = Push and twist style manual override

D = Knob style manual override

E = Pull style manual override

F = Hand operated pull style manual override

Common cavity size 10

Note: for solutions availability (K-X-Y combinations), please refer to TAB.1 on page 2.

Bosch Rexroth Oil Control S.p.A.

Via Leonardo da Vinci 5

P.O. Box no. 5

41015 Nonantola – Modena, Italy

Tel. +39 059 887 611

Fax +39 059 547 848

compact-hydraulics-hic@boschrexroth.com

www.boschrexroth.com/compacthydraulics

© This document, as well as the data, specifications and other information set forth in it, are the exclusive property of Bosch Rexroth Oil Control S.p.a.. It may not be reproduced or given to third parties without its consent. The data specified above only serve to describe the product. No statements concerning a certain condition or suitability for a certain application can be derived from our information. The information given does not release the user from the obligation of own judgment and verification. It must be remembered that our products are subject to a natural process of wear and aging. Subject to change.