

Solenoid operated valves 4-way 3-positions

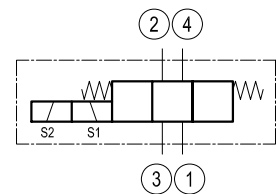
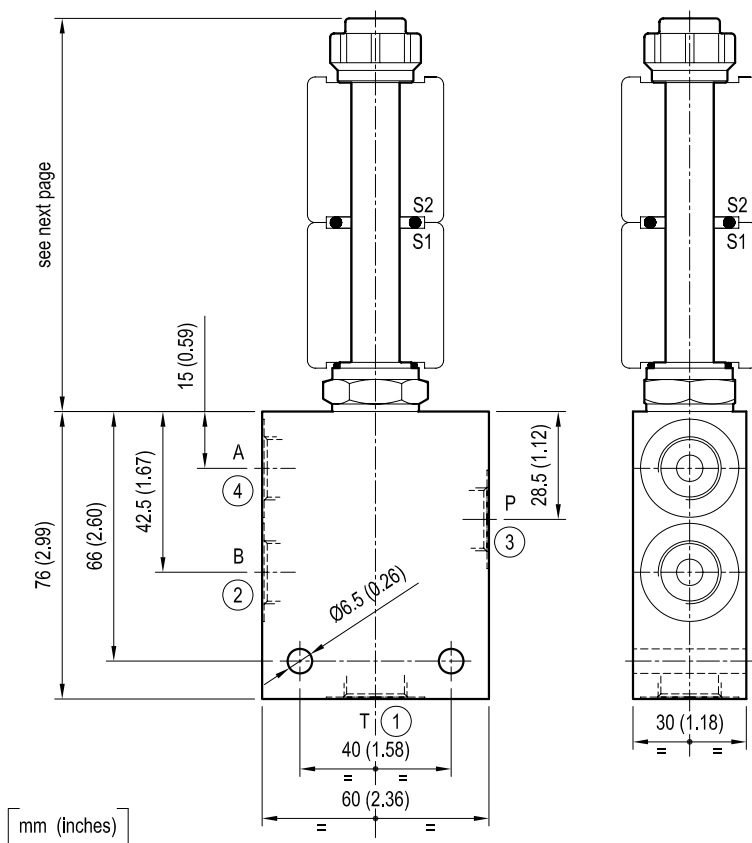
Common cavity size 08

Cartridge style in manifold

VED-CS-8I-43-06

OS.14 - K - 58 - Y - Z - W

Dimensions



Cartridge schemes

monodirectional type	bidirectional type

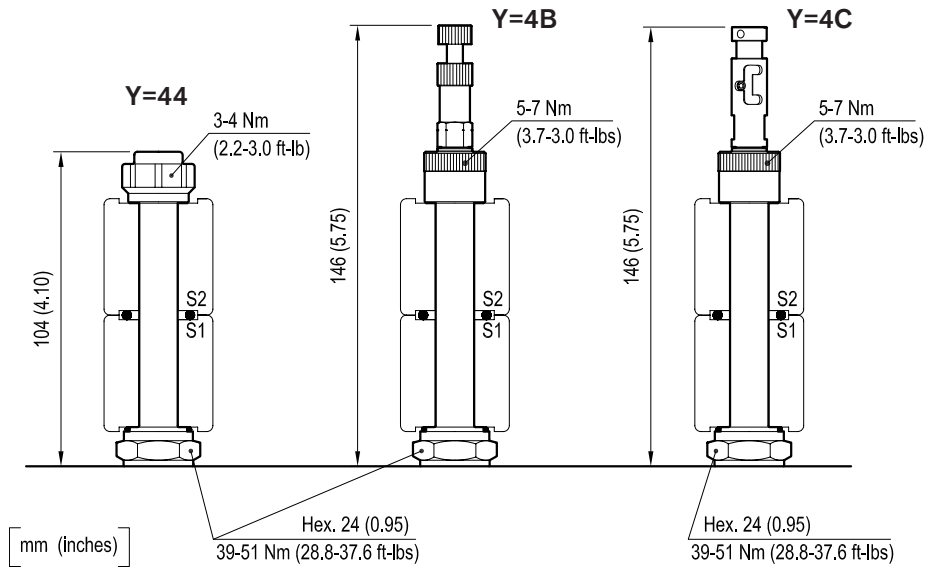
Technical data

Max flow: up to 10 l/min (3 gpm)

Max operating pressure: 210 bar (3000 psi)

Standard manifolds in high strength **aluminium**.
To order only manifold see data sheet RE 18325-85

Dimensions



CARTRIDGE TECHNICAL DATA

Common cavity: **CA-08A-4N**

Filtration: 25 µm nominal or better

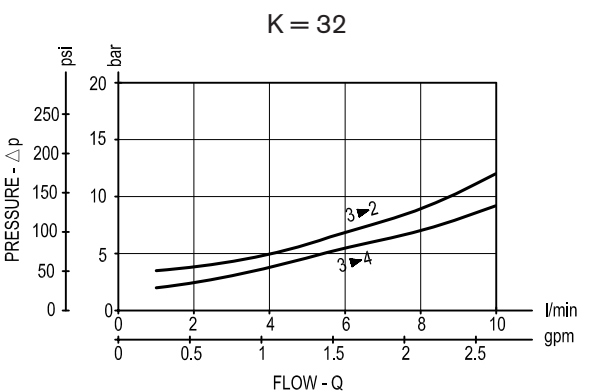
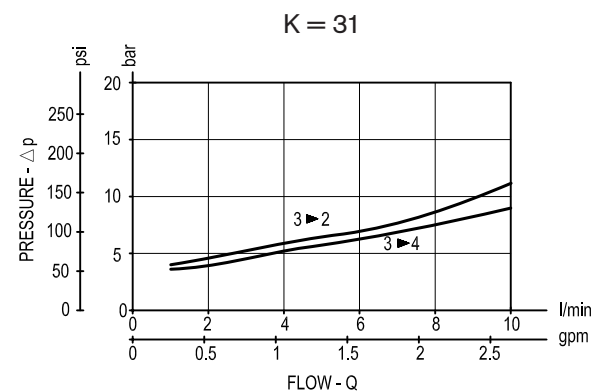
Minimum voltage required: 90% of nominal value

Coil : n°2 coils S8-356 **must be ordered separately** see data sheet RE 18325-90

Mounting position: unrestricted

[illegible]

Performance graphs



Ordering code

OS.14	K	58	Y	Z	W
<div> <div>Manifold with solenoid operated valve, 4-way 3-positions</div> <div> <div>Cartridge scheme (see page 1 and 2)</div> <div> <div>= 31</div> <div>= 32</div> </div> <div>Bidirectional</div> </div> <div>Common cavity size 08</div> </div>				<div> <div>Manifold material</div> <div>= 00 Aluminium</div> </div>	<div> <div>Port sizes (see table on page 2)</div> <div> <div>= 09 G 1/4</div> <div>= 02 G 3/8</div> </div> </div>
				See table on page 2	