

# Solenoid operated valves

## 3-way 2-positions

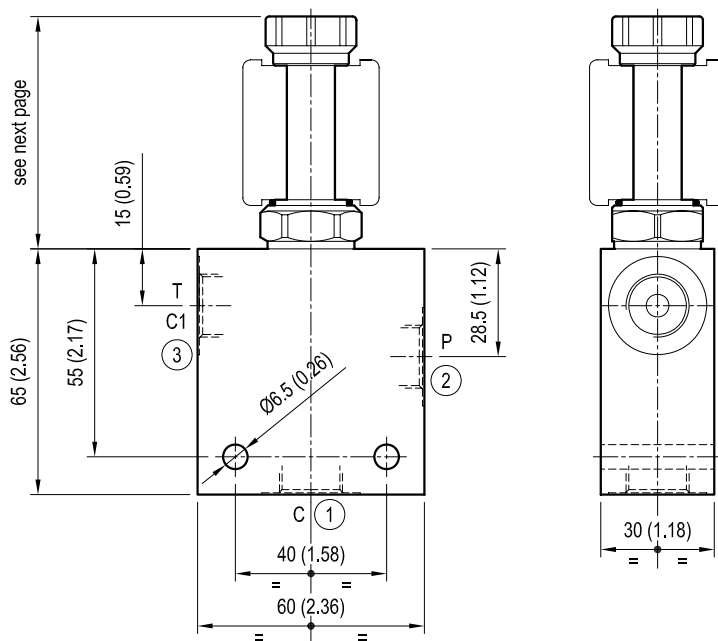
Common cavity size 08

Cartridge style in manifold

VED-CS-8I-32-06

OS.13 - K - 51 - Y - Z - W

### Dimensions



[ mm (Inches) ]

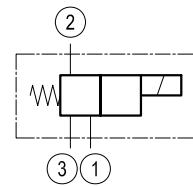
### Technical data

Max flow: up to 10 l/min (3 gpm)

Max operating pressure: 210 bar (3000 psi)

Standard manifolds in high strength **aluminium**.

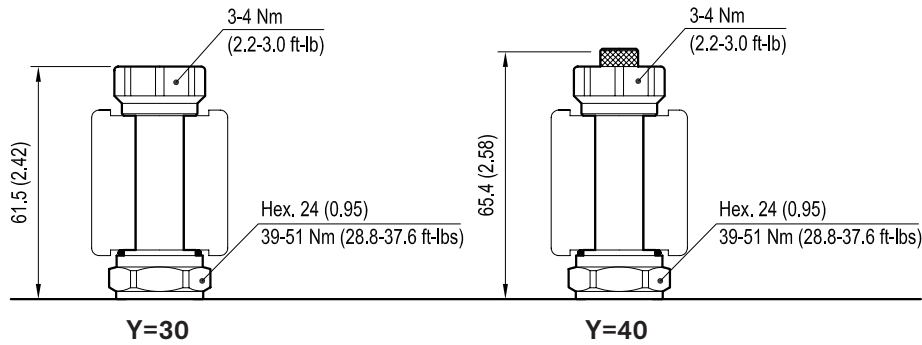
To order only manifold see data sheet RE 18325-85



### Cartridge schemes

monodirectional type	bidirectional type

## Dimensions

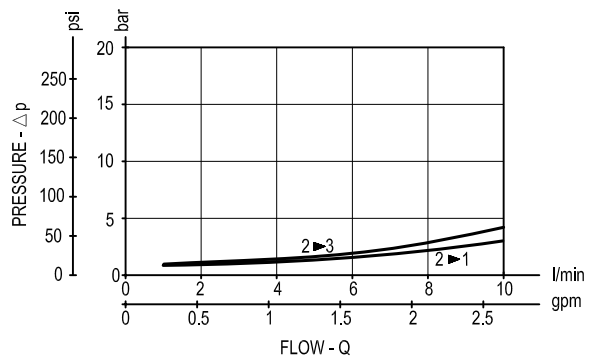


[mm (inches)]

<b>CARTRIDGE TECHNICAL DATA</b>
Common cavity: <b>CA-08A-3N</b>
Filtration: 25 µm nominal or better
Minimum voltage required: 90% of nominal value
Coil : S8-356 <b>must be ordered separately</b> see data sheet RE 18325-90
Mounting position: unrestricted

[illegible]

## Performance graph



Ordering code

OS.13						K	51	Y	Z	W
Manifold with solenoid operated valve, 3-way 2-positions										
Cartridge scheme (see page 1 and 2)										
= 10						Bidirectional				
= 11										
= 20										
= 30										
Common cavity Size 08										