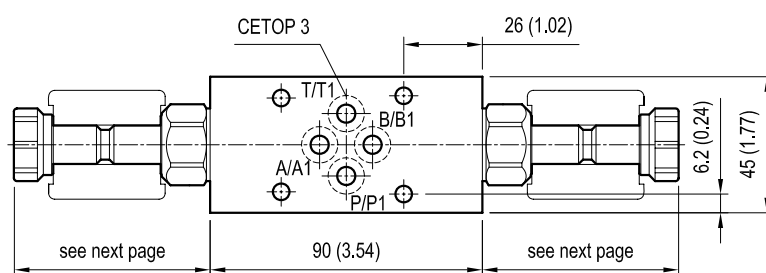
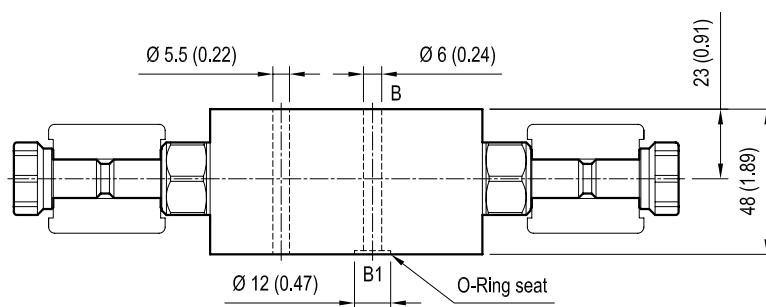


Sandwich valves, module with solenoid valve

EM-VEI8A/8I-CETOP 3-A/B

OP . 15 - K - 18 - 29 - Y

Dimensions



[mm (inches)]

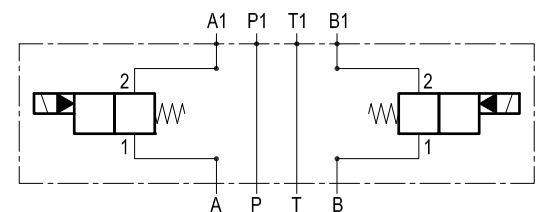
Technical data

Max flow: up to 40 l/min (11 gpm)

Max operating pressure: 210 bar (3000 psi)

Standard manifolds in high strength aluminium.

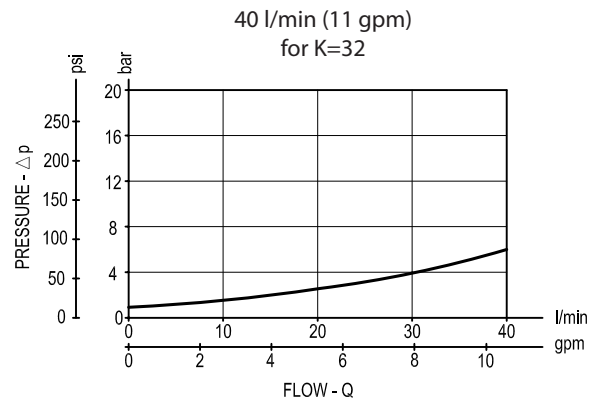
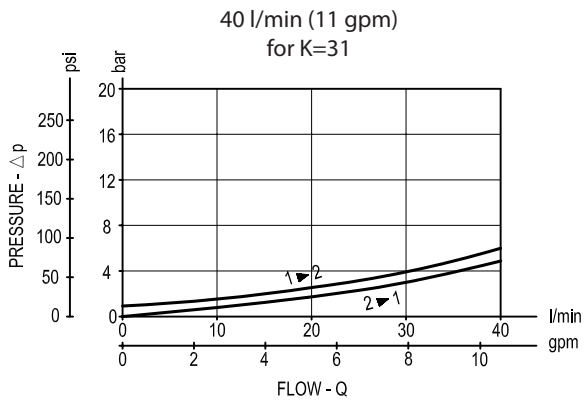
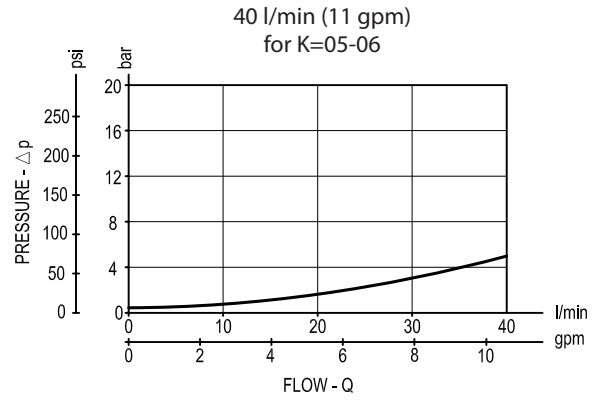
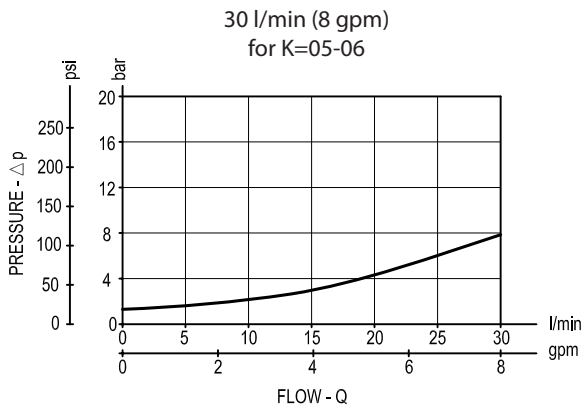
For working pressure up to 350 bar (5000 psi) and for fatigue applications with any working pressure, steel manifolds are available upon request.



Cartridge schemes

monodirectional type	bidirectional type

Performance graphs



Ordering code

OP.15	K	18	29	Y
-------	---	----	----	---

Sandwich valves
module with solenoid valve

Cartridge scheme (see page 1 and 2)

= 05

= 06

= 31

= 32

Bidirectional

Common cavity Size 08

Rated flow (see table on page 2)

Flange CETOP 3 (DOT3)

Preferred types (readily available)

Type	Material number
OP150518293A00	R934002694
OP150518293D00	R934003310
OP150618291A00	R934002695
OP153118293A00	R934002696
OP153118293D00	R934003311
OP153218291A00	R934002697
OP153218291B00	R934002698

Type	Material number

Further types available by request