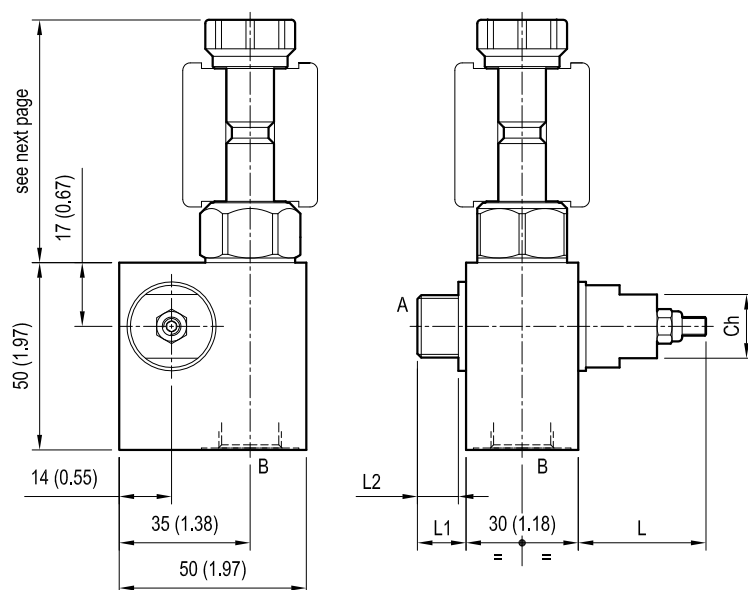


Standard integrated circuits for single acting cylinder

VEI-VCDCBL-8A-06

OL.17 - K - 18 - Y - Z - W

Dimensions



[mm (inches)]

30.2 (1.19)	12.5 (0.49)	11 (0.43)	14 (0.55)			G 1/4	30 (22)
33.6 (1.32)	12.5 (0.49)	12 (0.47)	17 (0.67)			G 3/8	60 (44)
L	L1	L2	Ch			Ports Size	Tightening Torque Nm (ft-lb)

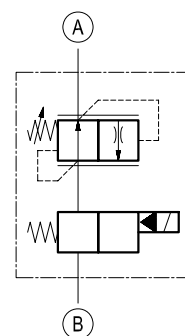
Technical data

Max flow: up to 40 l/min (11 gpm)

Max operating pressure: 210 bar (3000 psi)

Standard manifolds in high strength aluminium.

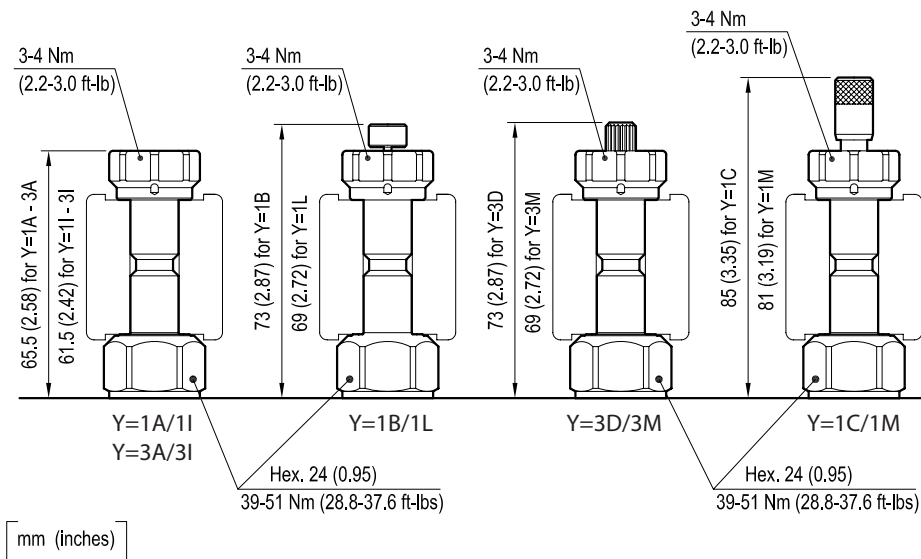
For working pressure up to 350 bar (5000 psi) and for fatigue applications with any working pressure, steel manifolds are available upon request.



Cartridge schemes

monodirectional type	bidirectional type

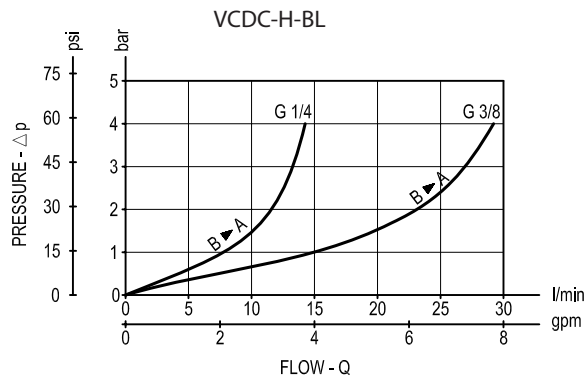
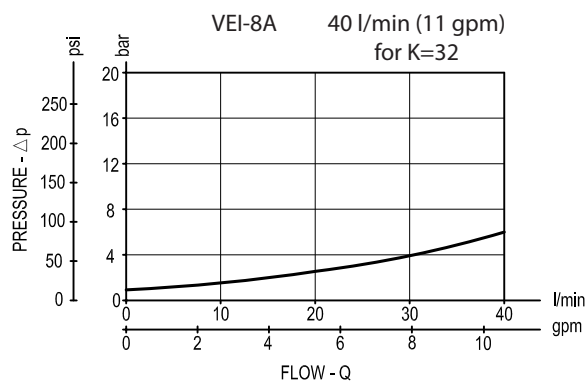
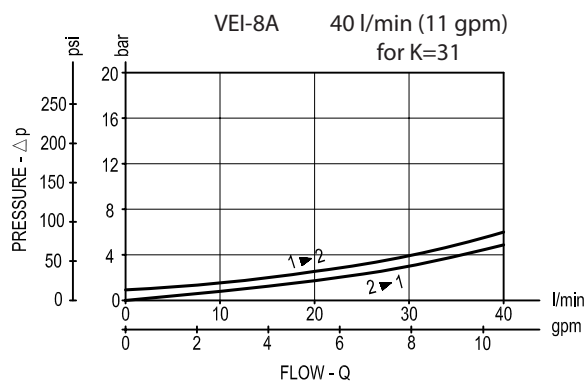
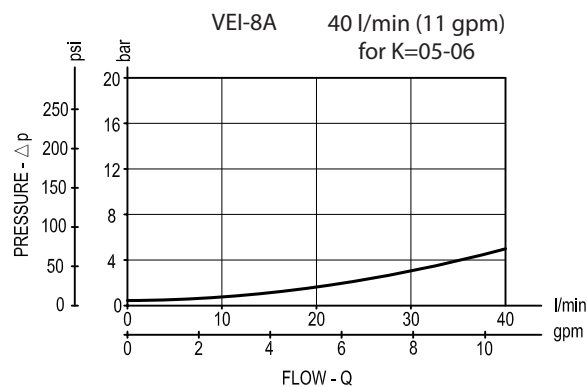
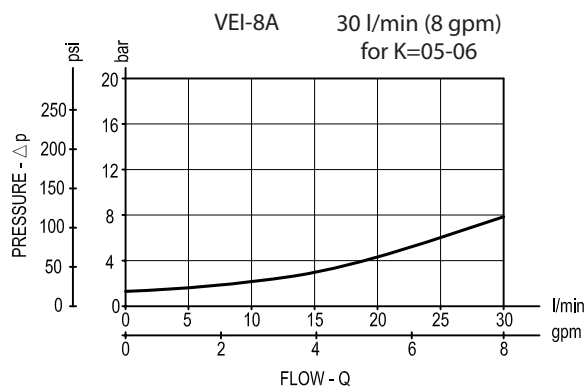
Cartridge style



CARTRIDGE TECHNICAL DATA
Common cavity: CA-08A-2N
Filtration: 25 µm nominal or better
Minimum voltage required: 90% of nominal value
Coil : S8-356 must be ordered separately (see data sheet RE 18325-90)
Mounting position: unrestricted
For other details see cartridge data sheet

[illegible]

Performance graphs



Ordering code

OL.17	K	18	Y	Z	W
Standard integrated circuits for single acting cylinder					Regulated flow range (see table on page 2)
Cartridge scheme (see page 1 and 2)					Port sizes (see table on page 2)
= 05					= 09 G 1/4
= 06					= 02 G 3/8
= 31					
= 32					
Solenoid valve common cavity Size 08					Rated flow (see table on page 2)

Preferred types (readily available)

[illegible]

Further types available by request