

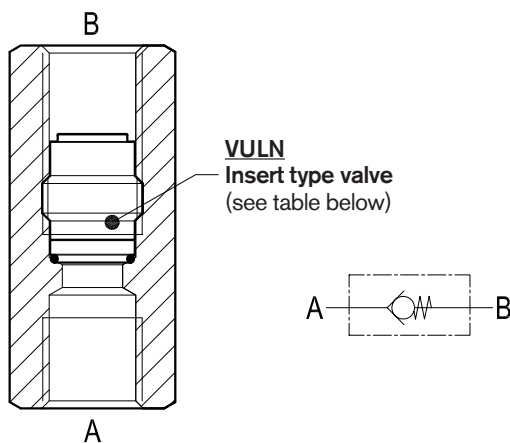
Check valves

Ball type with insert and female threaded sleeve



VULN-FF

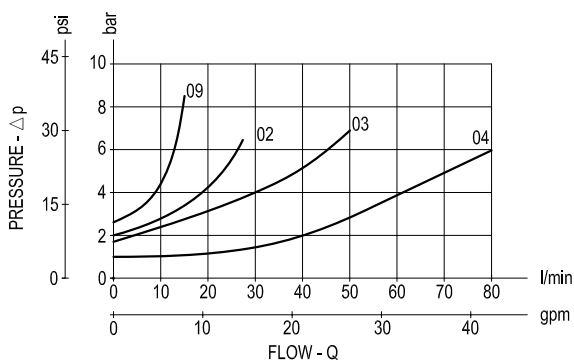
OE.U4.01.01-Y-Z



Description

This valve is composed by a sleeve with an inserted ball type check cartridge.
Flow is always allowed to pass from A to B when pressure at A rises above the spring bias pressure and the ball is pushed from the seat. The valve is normally closed (checked) from B to A. The inserted cartridge can be reached from either port in order to be screwed-in or screwed-out with an Allen type key 3-4-5-6-8 mm, depending from the cartridge size, and from the port used.

Performance



Δp curves vs. flow in "A-B" free flow direction

As seen on the diagram, the cracking pressure is very low.

Advantages

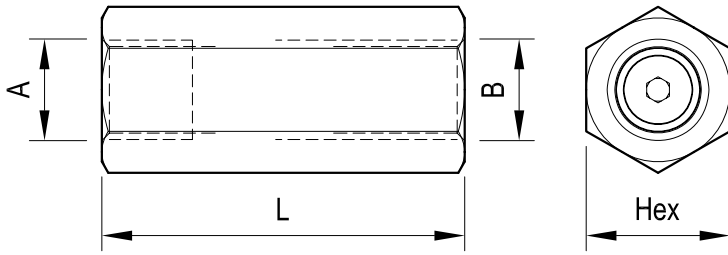
- Very compact design and inline mounting for space saving.
- Mounting position is unrestricted.
- Four sizes provide great adaptability to the system.

Technical data

| VULN Code | Ports A-B | Pressure P max bar (psi) | Flow Q max l/min (gpm) | Weight kg (lbs) |
|-------------------|-----------|--------------------------|------------------------|-----------------|
| 0T.U4.01.00.09.00 | G 1/4 | 210 (3000) | 15 (4) | 0.02 (0.04) |
| 0T.U4.01.00.02.00 | G 3/8 | 210 (3000) | 30 (8) | 0.03 (0.07) |
| 0T.U4.01.00.03.00 | G 1/2 | 210 (3000) | 50 (13) | 0.04 (0.09) |
| 0T.U4.01.00.04.00 | G 3/4 | 210 (3000) | 80 (21) | 0.07 (0.15) |

Steel body, zinc plated

Dimensions



Ports size / Dimensions

| Y | Ports A-B | L mm (inches) | Hex mm (inches) | Sleeve code |
|----|-----------|---------------|-----------------|--------------|
| 09 | G 1/4 | 48 (1.89) | 19 (0.75) | OC.51.02.001 |
| 02 | G 3/8 | 52 (2.05) | 22 (0.87) | OC.51.02.002 |
| 03 | G 1/2 | 62 (2.44) | 27 (1.06) | OC.51.02.003 |
| 04 | G 3/4 | 70 (2.76) | 36 (1.42) | OC.51.02.004 |

| Z | CRACKING PRESSURE bar (psi) | | | |
|----|-----------------------------|-------------|-------------|-----------|
| | G 1/4 | G 3/8 | G 1/2 | G 3/4 |
| 00 | 2.3 (33.4) | 1.75 (25.4) | 1.75 (25.4) | 0.3 (4.4) |

Ordering code

| | | |
|-------------|---|---|
| OE.U4.01.01 | Y | Z |
|-------------|---|---|

Ball type with insert and female threaded sleeve

Cracking pressure see table "Z"

Ports size / Dimensions see table "Y"

| Type | Material number | Type | Material number | Type | Material number |
|--------------|-----------------|------|-----------------|------|-----------------|
| OEU401010201 | R932007264 | | | | |
| OEU401010301 | R932007265 | | | | |
| OEU401010401 | R932007266 | | | | |
| OEU401010901 | R932007263 | | | | |
| | | | | | |
| | | | | | |
| | | | | | |
| | | | | | |
| | | | | | |
| | | | | | |