

Proportional valves poppet type
not compensated flow regulator
Common cavity, Size 12

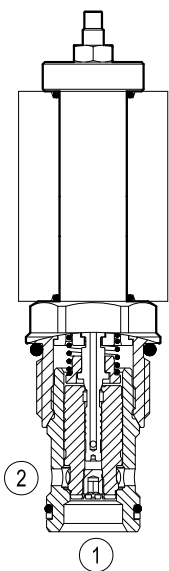
VEPN-12A

OD.95.06.89.72.00

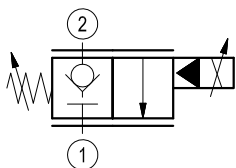
RE 18323-69

Edition: 03.2020

Replaces: 01.2016



▼ Version 06



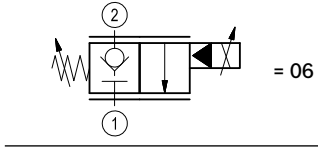
Technical data

General		
Weight		0.29 kg (0.64 lbs)
Installation orientation		Optional
Ambient temperature range		-30 to 90 °C (-22 to 194 °F)
Salt spray test to DIN EN ISO 9227:2017-07		500h
Hydraulic		
Max. operating pressure		210 bar (3000 psi)
Flow range		5 - 60 l/min. (1 - 16 gpm)
Max. internal leakage		10 cm ³ /min. (0.6 cu.in./min.)
Fluid temperature range		-20 to 80 °C (-4 to 176 °F)
Fluids: Mineral-based or synthetics with lubricating properties at viscosities of 15 to 380 mm ² /s (cSt)		
Installation torque		51 - 55 Nm (38 - 41 ft-lbs)
Recommended degree of fluid contamination		Nominal value max. 10 µm (NAS 8) ISO 4406 19/17/14
Cavity		CA-12A-2N see 18325-70
Lines bodies and standard assemblies		Please refer to section "Hydraulic integrated circuit" or consult factory
Seal kit	code material no.	RG12A2010520100 R901111377
Seal kit coil	code material no.	RG16A1PMVQ0010 R934003962
Other technical data		See data sheet 18350-50
Electrical		
Type of voltage		12 DC voltage
Coil type		R7
Supply voltage		12 DC
Nominal voltage		± 10%
Power consumption		18 W
Duty cycle coil		100
Type of protection		See data sheet 18325-90
Note: Coils must be ordered separately		

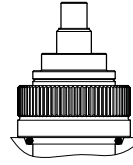
Ordering code

OD.95	06	89	72	00	00
--------------	-----------	-----------	-----------	-----------	-----------

Proportional valves poppet type
not compensated flow regulator



72 = Manual setting off set



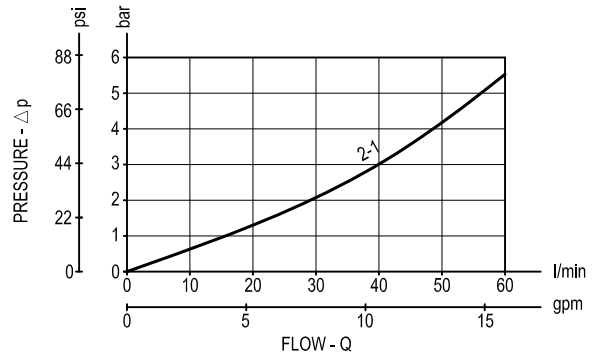
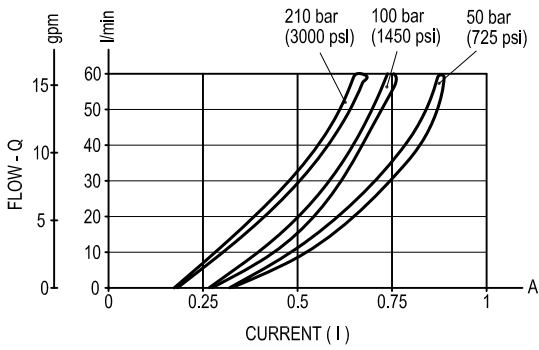
Common cavity: CA-12A-2N

Preferred types

Type	Material number
OD950689720000	R934001162

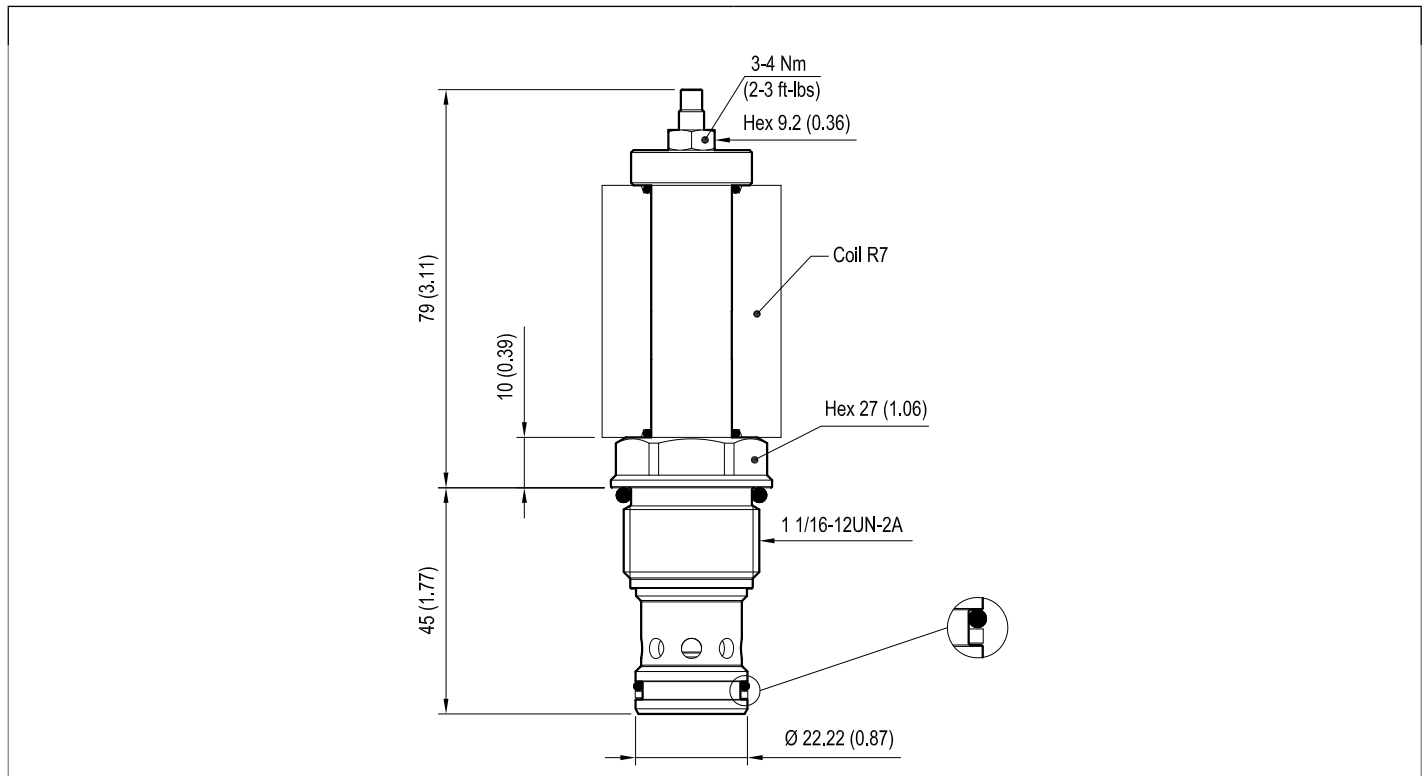
Type	Material number

Characteristic curves



	I	P bar (psi)	Coils
I min:	0.2	210 (3000)	12 DC
I max:	0.65	210 (3000)	12 DC
PMW Frequency: 120-150 Hz			
Hysteresis: < 5%			

Note (1): It is recommended to use coil 12 DC.
 Note (2): Performance using coil without diode.

Dimensions▼ **Proportional valves poppet type
not compensated flow regulator****Bosch Rexroth Oil Control S.p.A.**

Via Leonardo da Vinci 5
P.O. Box no. 5
41015 Nonantola – Modena, Italy
Tel. +39 059 887 611
Fax +39 059 547 848
compact-hydraulics-cv@boschrexroth.com
www.boschrexroth.com/compacthydraulics

© This document, as well as the data, specifications and other information set forth in it, are the exclusive property of Bosch Rexroth Oil Control S.p.a.. It may not be reproduced or given to third parties without its consent. The data specified above only serve to describe the product. No statements concerning a certain condition or suitability for a certain application can be derived from our information. The information given does not release the user from the obligation of own judgment and verification. It must be remembered that our products are subject to a natural process of wear and aging. Subject to change.