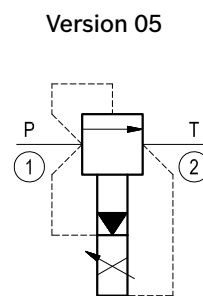
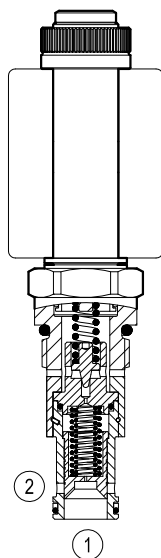


Proportional valves pilot operated relief

Special cavity, 065

VEP-5B-2S-P

OD.94.05.61 - Y - Z



General

Weight	kg (lbs)	0.36 (0.79)
Installation orientation		Optional
Ambient temperature range	°C (°F)	-30 to 60 (-22 to 140)
Salt spray test to DIN EN ISO 9227:2017-07		500h

Hydraulic

Max. operating pressure	bar (psi)	350 (5000)
Flow range	l/min.(gpm)	8-150 (2-40)
Max. internal leakage (*)	cm ³ /min. (cu.in./min.)	180 (11)
Fluid temperature range	°C (°F)	-20 to 80 (-4 to 176)
Fluids		Mineral-based or synthetics with lubricating properties at viscosities of 15 to 380 mm ² /s (cSt)
Installation torque	Nm (ft-lbs)	121-133 (90-99)
Recommended degree of fluid contamination		Nominal value max. 10µm (NAS 8) ISO 4406 19/17/14
Cavity		065 see RE 18325-75
Lines bodies and standard assemblies		Please refer to section "Hydraulic integrated circuit" or consult factory
Seal kit	code material no.	RG0065010520100 R930001958
Seal kit coil	code material no.	RG19A1PNBR7010 R934003964
Other technical data		See data sheet RE 18350-50

(*) at 20% of pressure setting. Oil at 46 cSt.

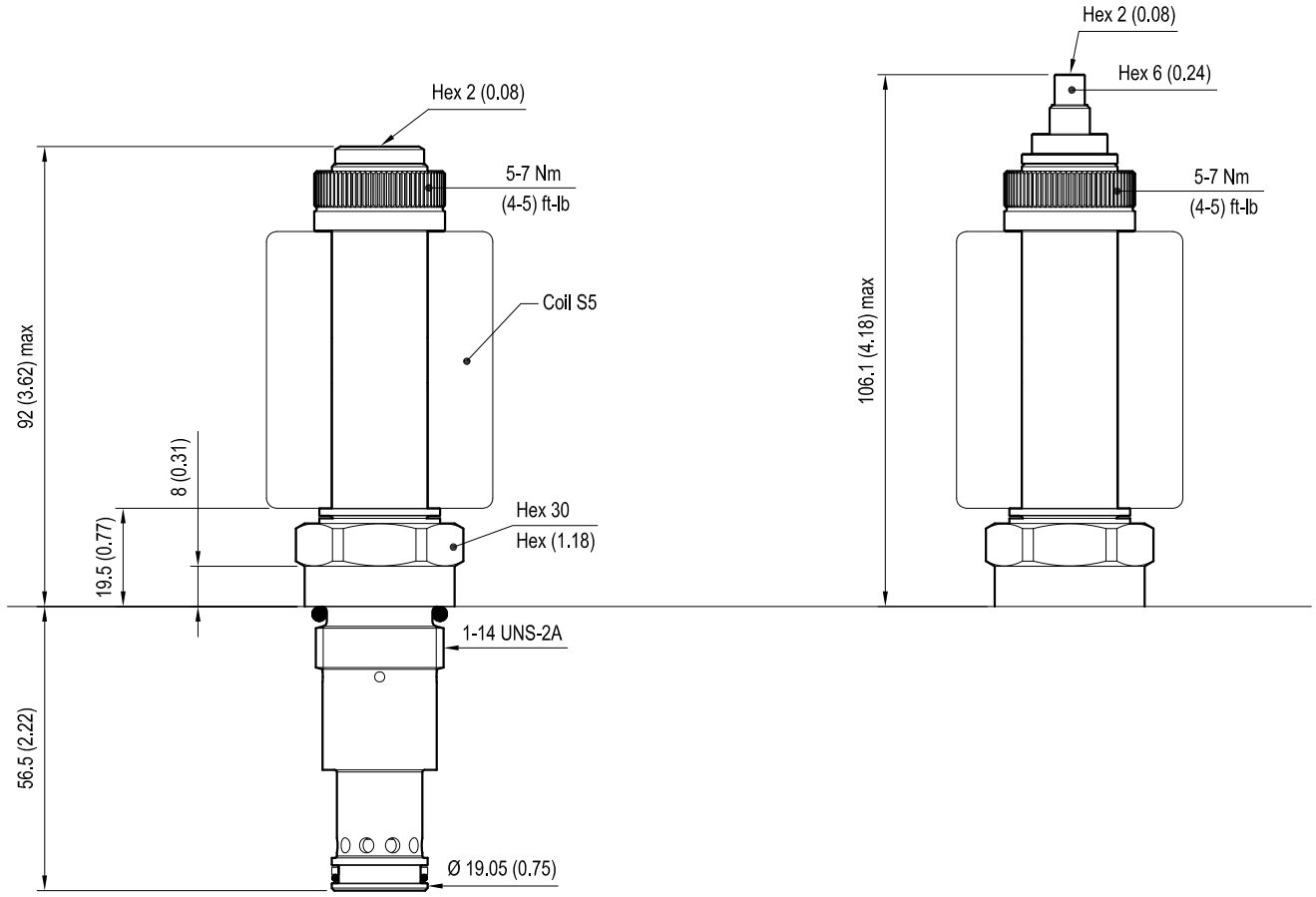
Electrical

Type of voltage		DC voltage
Coil type		S5
Supply voltage	V	12 DC
Nominal voltage		± 10%
Power consumption	W	23
Duty cycle	%	100
Type of protection		See data sheet RE 18325-90

Note: Coils must be ordered separately.

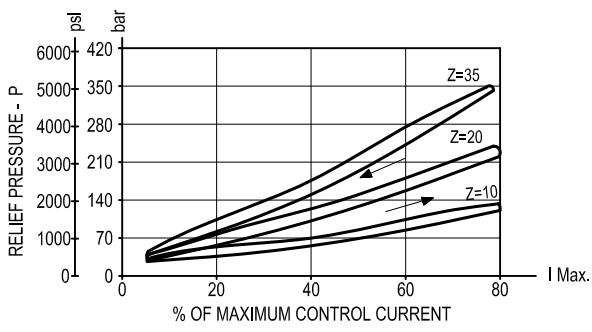
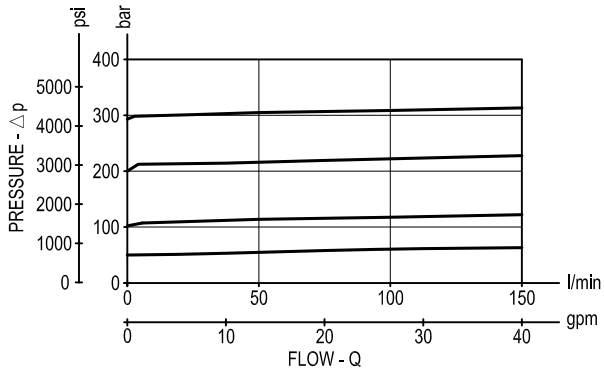
Dimensions

Proportional valves pilot operated relief



[mm (Inches)]

Performance graphs



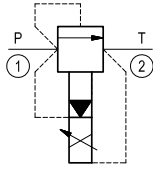
PMW Frequency: 120-150 Hz
Hysteresis: < 5%

Note: Performance using coil without diode.

Ordering code

OD.94 | 05 | 61 | Y | Z

Proportional valves pilot operated relief

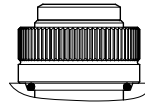


Special cavity: 065

	Operating range			
	Pressure range bar (psi)	Voltage V	I Min. A (±10%)	I Max. A (±10%)
= 10	20-120 (290-1740)	12	0.2	1.5
= 20	20-220 (290-3190)	12	0.1	1.7
= 35	30-350 (440-5000)	12	0.2	1.7

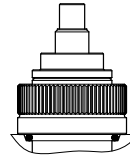
Performance using coil without diode.
standard type

03 =



knob style manual override

04 =



Type	Material number
OD940561031000	R934001541
OD940561032000	R934001542
OD940561033500	R934001543
OD940561041000	R934001544
OD940561042000	R934001545
OD940561043500	R934003850

Type	Material number