

Proportional valves pilot operated poppet type,
2-way flow regulator not compensated
Special cavity, R/A-01

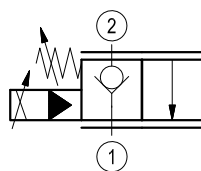
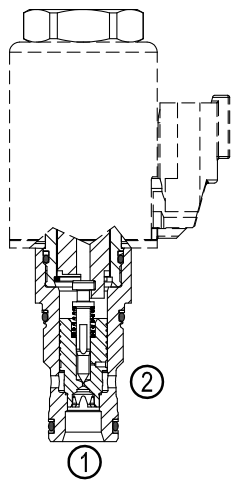
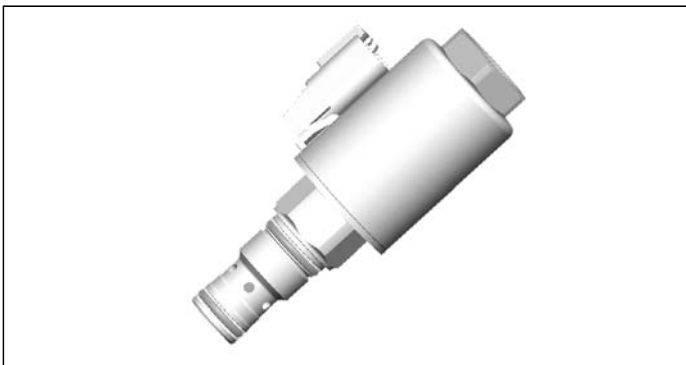
KSVS.U1

KSVSU1AA/ACG24N0K40V

RE 18323-76

Edition: 03.2020

Replaces: 12.2019



Technical data

General

Weight	0.5 kg (1.1 lbs)
Installation position	Any
Ambient temperature range	-30 to 110 °C (-22 to 230 °F)
Salt spray test to DIN EN ISO 9227:2017-07	500h

Hydraulic

Max. operating pressure port 1, 2	450 bar (6525 psi)
Maximum Δp ¹⁾	420 bar (6000 psi)
Nominal flow	25 l/min. at 14 bar Δp (6.6 gpm at 200 psi Δp)
Hysteresis	between 3% and 7% from 40% of I_{max} . up to 85% of I_{max} . less than 10% above 85% of I_{max} .

Recommended dither frequency (PWM) 200 Hz / Range 100-250 Hz

Max. internal leakage 100 drops/min. (at $\Delta p=150$ bar; HLP46, $T_{oil} = 40^\circ C$)

Fluid temperature range -35 to 110 °C (-31 to 230 °F)

Fluids: Mineral-based or synthetics with lubricating properties at viscosities of 15 to 380 mm²/s (cSt) see RE 90221

Recommended degree of fluid contamination (NAS 8) / ISO 4406 20/18/15

Cavity R/A-01

MTTFD 150 years see 18350-51

Load cycles 10 Mio.

Spare parts

Cavity seal kit RG08X2070630100
material no. R930070798

Electrical

Type of voltage	DC voltage
Coil type	R901050010 see 18325-90
Connection	DT-04-2PA DEUTSCH
ED (up to 110°C)	100%
Resistance	11.5 Ω

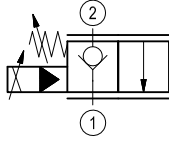
¹⁾ 2 -> 1: <420 bar

1 -> 2: <50 bar at nominal flow; Higher flow rate on request.

Ordering code

KSVSU1	A	A/	A	C	G	24N0K40V
---------------	----------	-----------	----------	----------	----------	-----------------

Proportional valves pilot operated poppet type
2-way flow regulator not compensated



24 Voltage
N0 without manual override
K40 Connection
V Viton

Operation

When energized, the cartridge allows volume flow from 2 to 1. Flow is proportional to applied current.
When de-energized, flow is blocked from 2 to 1 and not blocked from 1 to 2.

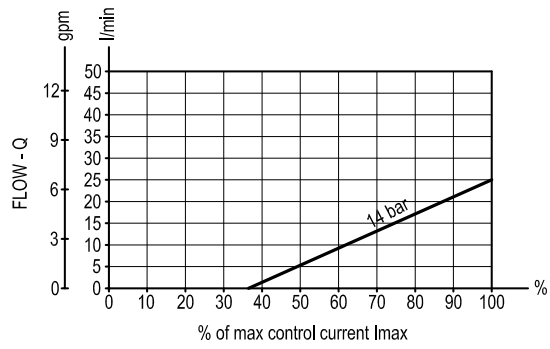
Preferred types

Type	Material number
KSVSU1AA/ACG24N0K40V	R901488887

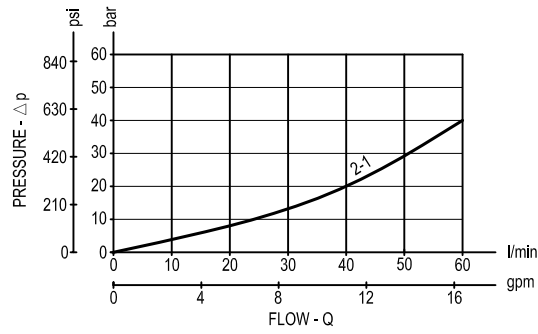
Type	Material number

Characteristic curves

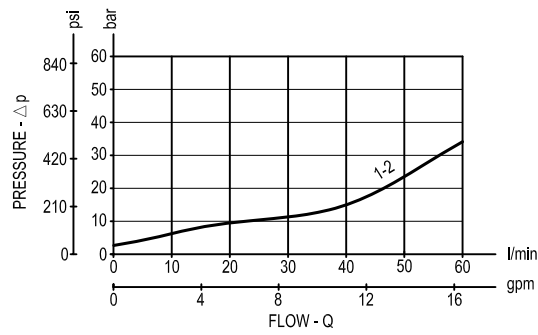
Compensated flow vs % of control current



Delta p 2 to 1 at 100% of I_{max} control current

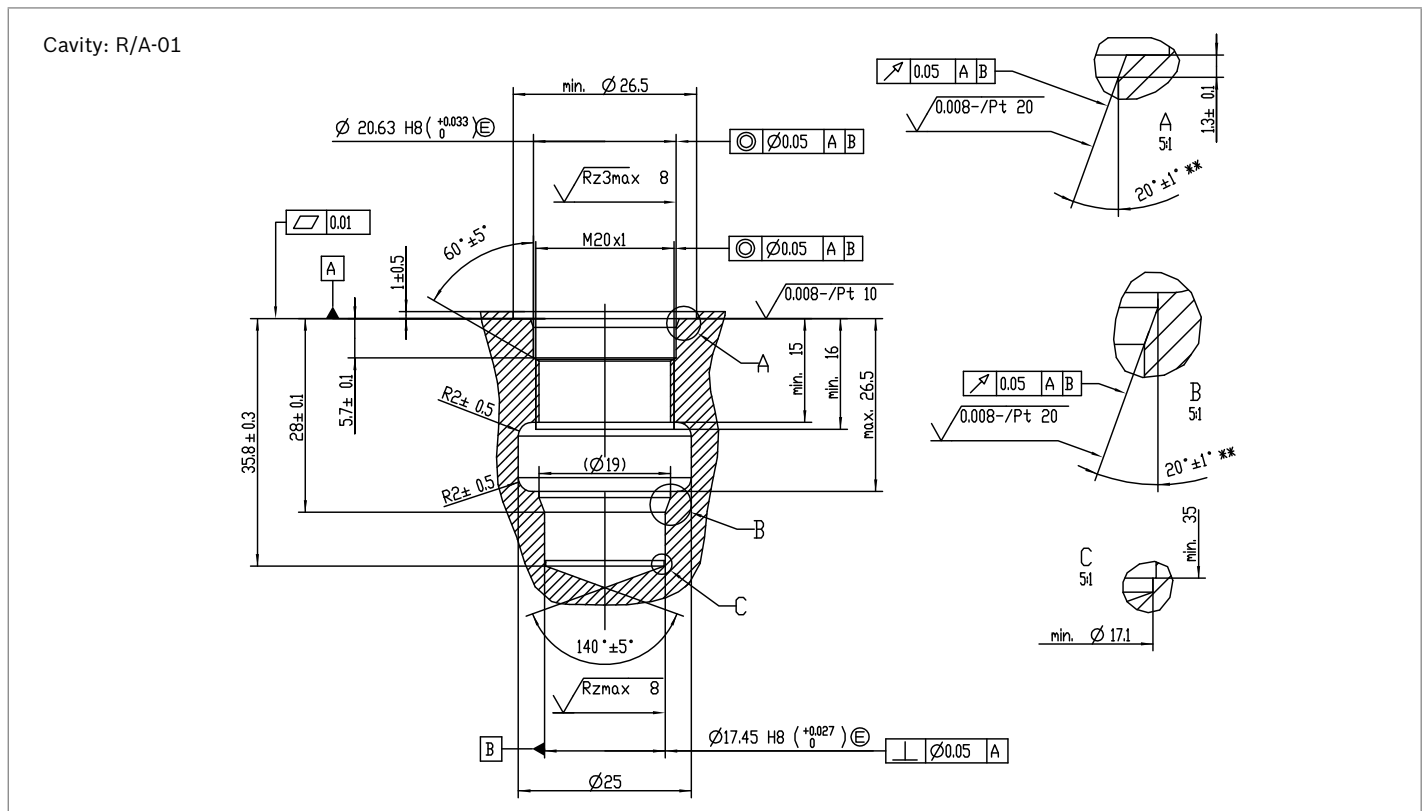
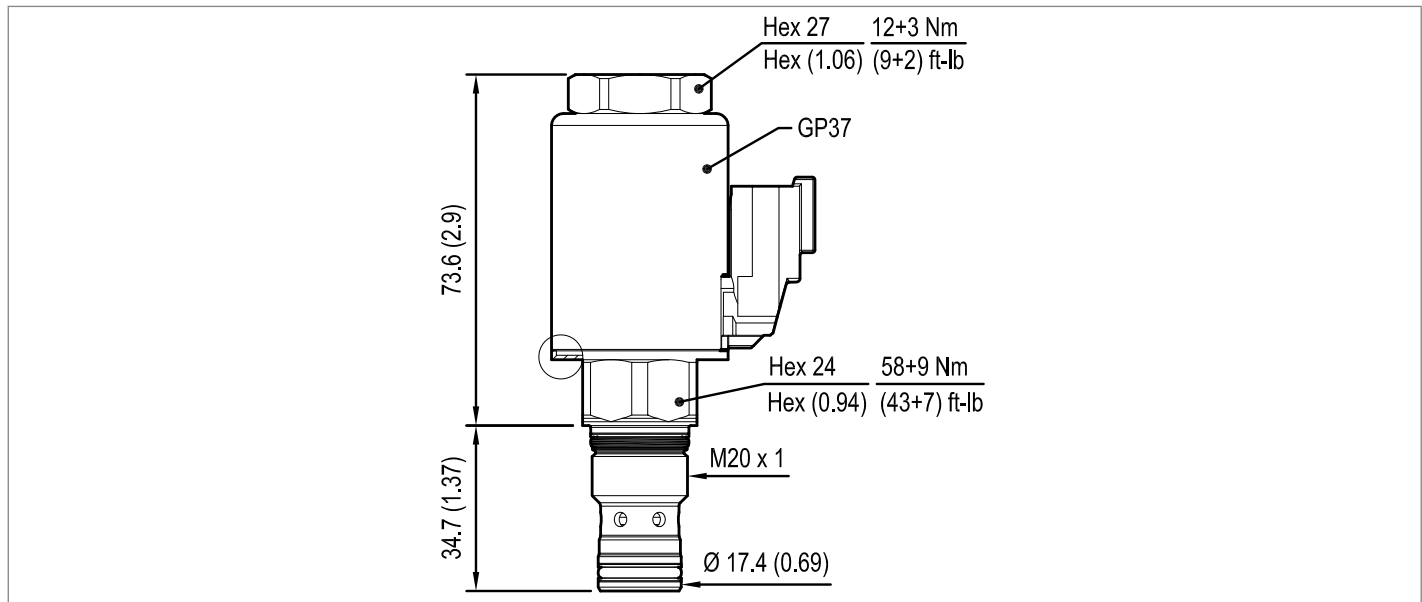


Delta p 1 to 2



Dimensions

▼ **Proportional valves pilot operated poppet type
2-way flow regulator not compensated**



Bosch Rexroth Oil Control S.p.A.
 Via Leonardo da Vinci 5
 P.O. Box no. 5
 41015 Nonantola – Modena, Italy
 Tel. +39 059 887 611
 Fax +39 059 547 848
 compact-hydraulics-cv@boschrexroth.com
 www.boschrexroth.com/compacthydraulics

© This document, as well as the data, specifications and other information set forth in it, are the exclusive property of Bosch Rexroth Oil Control S.p.a.. It may not be reproduced or given to third parties without its consent. The data specified above only serve to describe the product. No statements concerning a certain condition or suitability for a certain application can be derived from our information. The information given does not release the user from the obligation of own judgment and verification. It must be remembered that our products are subject to a natural process of wear and aging. Subject to change.