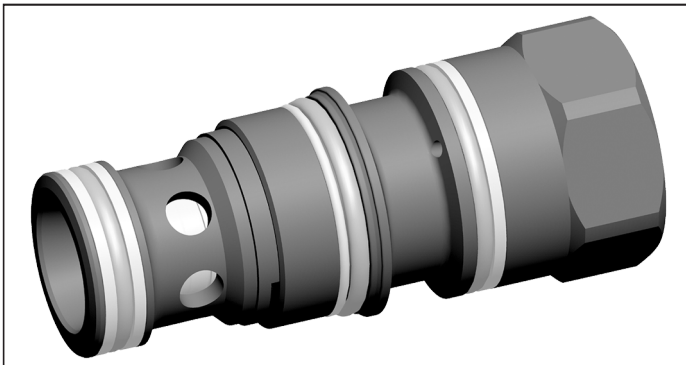


Pilot operated check,  
pilot to close  
SUN cavity interchange, T-2A

KGD

**RE 18319-43**

Edition: 09.2021

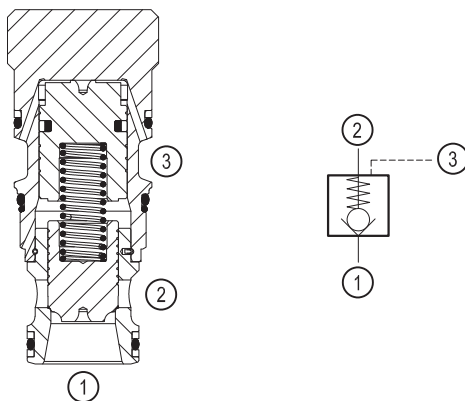


**Technical data**

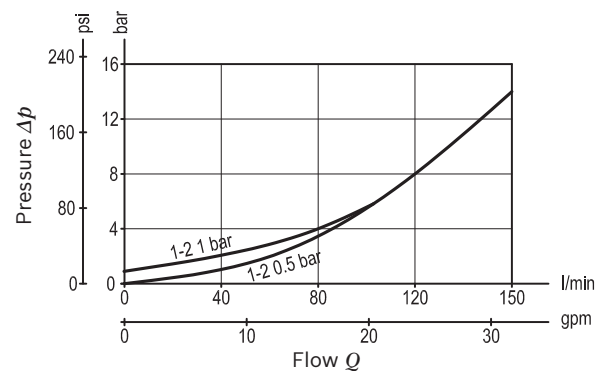
Max. operating pressure	350 bar (5000 psi)
Max. flow	160 l/min. (42.3 gpm)
Fatigue cycle life	10 million cycles at 350 bar
Pilot ratio	1.8:1
Max. internal leakage	< 0.05 cm <sup>3</sup> /min
Fluid temperature range	-40 to 110 °C (-40 to 230 °F)
Installation torque	100 - 110 Nm (135 - 149 ft-lbs)
Weight	0.3 kg (0.66 lbs)
MTTFD	150 years see RE 18350-51
Cavity	SUN T-2A
Lines bodies and standard assemblies	Please refer to section "Hydraulic integrated circuit" or consult factory
Fluids	Mineral oil (HL, HLP) to DIN 51524; fast bio-degradable hydraulic fluids to VDMA 24568 (see also data sheet 90221); HETG (rape seed oil); HEPG (polyglycols); HEES (synthetic esters); other hydraulic fluids on request at viscosities of 2.8 to 500 mm <sup>2</sup> /s (cSt)
Recommended degree of fluid contamination	ISO 4406 20/18/15
Installation position	Optional
Other Technical Data	See data sheet 18350-50

**Description**

Cartridge valves of type KGD allow free flow from main port 1 to main port 2. The reverse flow from main port 2 to 1 is impossible. The pressure in main port 3 counteracts the pressure in main port 1 at a ratio of 1.8:1 and holds the cartridge valve closed (checking position).



**Characteristic curve**



**Ordering code**

<b>KGD</b>	<b>0</b>	<b>R</b>	<b>2</b>		<b>A / H</b>	<b>V</b>	<b>*</b>
------------	----------	----------	----------	--	--------------	----------	----------

Check valve,  
pilot-to-close

**Type of adjustment element**

Without adjustment element = 0

**Pressure range**

350 bar = R

Component size = 2

Further details in clear text

**Seal material**

FKM seals  
(other seals on request)  
Attention!  
Observe compatibility of seals  
with hydraulic fluid used!

High Performance and  
mounting cavity T-2A

Component series

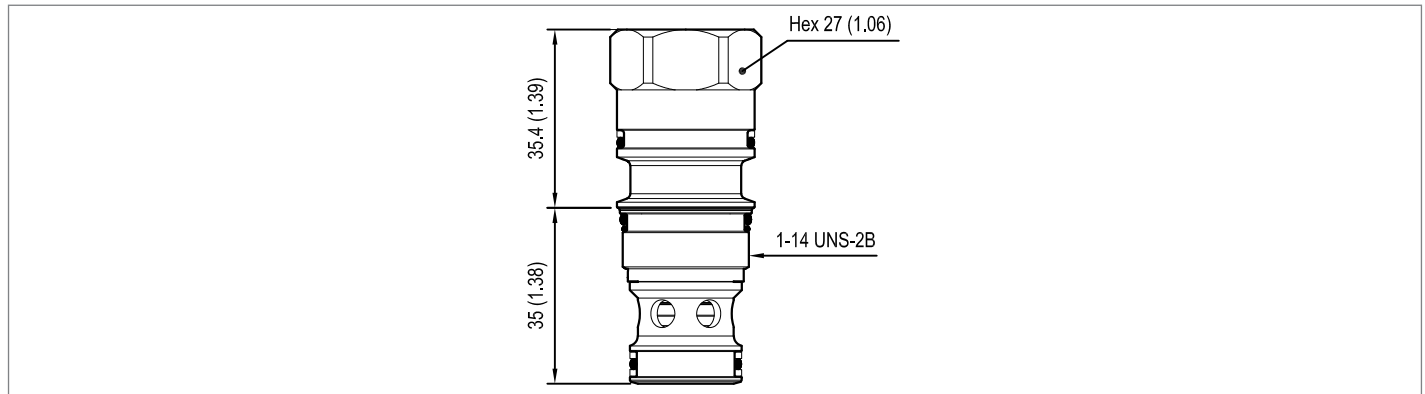
**Cracking pressure**

A = 0.5 bar  
B = 1.0 bar  
C = 2 bar

Type	Material number
KGD0R2AA/HV	R901093734
KGD0R2BA/HV	R901093814
KGD0R2CA/HV	R930074598

Type	Material number

**Dimensions**



**Bosch Rexroth Oil Control S.p.A.**

Via Leonardo da Vinci 5  
P.O. Box no. 5  
41015 Nonantola – Modena, Italy  
Tel. +39 059 887 611  
Fax +39 059 547 848  
compact-hydraulics-cv@boschrexroth.com  
www.boschrexroth.com/compacthydraulics

© This document, as well as the data, specifications and other information set forth in it, are the exclusive property of Bosch Rexroth Oil Control S.p.a.. It may not be reproduced or given to third parties without its consent. The data specified above only serve to describe the product. No statements concerning a certain condition or suitability for a certain application can be derived from our information. The information given does not release the user from the obligation of own judgment and verification. It must be remembered that our products are subject to a natural process of wear and aging. Subject to change.