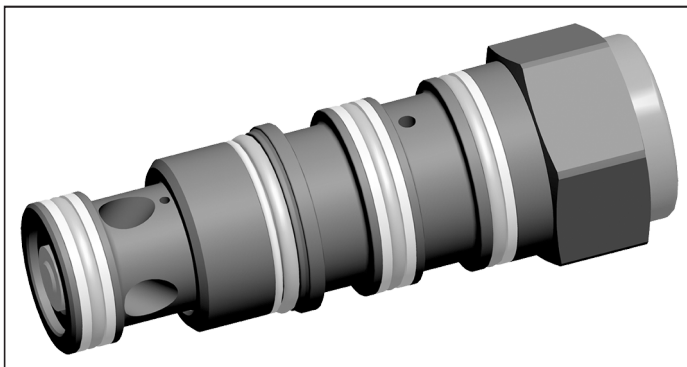


Pilot operated check,
pilot to open
SUN cavity interchange, T-22A

KED

RE 18319-42

Edition: 09.2021

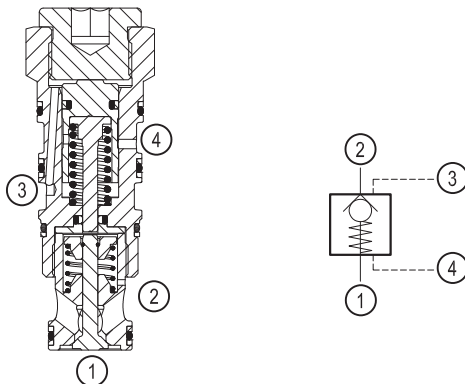


Technical data

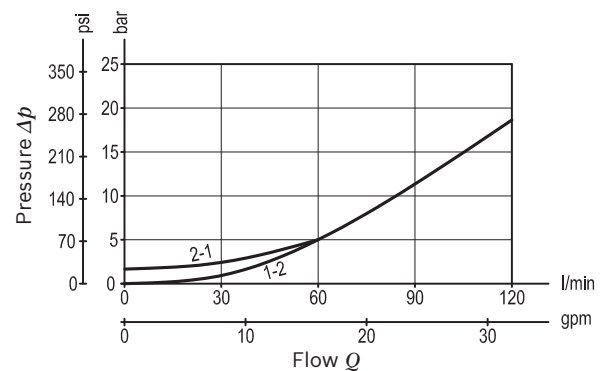
Max. operating pressure	350 bar (5000 psi)
Max. flow	120 l/min. (32 gpm)
Fatigue cycle life	10 million cycles at 385 bar
Pilot ratio	2.5:1
Max. internal leakage	< 0.05 cm ³ /min
Fluid temperature range	-40 to 110 °C (-40 to 230 °F)
Installation torque	100 - 110 Nm (135 - 149 ft-lbs)
Weight	0.44 kg (0.97 lbs)
MTTFD	150 years see RE 18350-51
Cavity	SUN T-22A
Lines bodies and standard assemblies	Please refer to section "Hydraulic integrated circuit" or consult factory
Fluids	Mineral oil (HL, HLP) to DIN 51524; fast bio-degradable hydraulic fluids to VDMA 24568 (see also data sheet 90221); HETG (rape seed oil); HEPG (polyglycols); HEES (synthetic esters); other hydraulic fluids on request at viscosities of 2.8 to 500 mm ² /s (cSt)
Recommended degree of fluid contamination	ISO 4406 20/18/15
Installation position	Optional
Other Technical Data	See data sheet 18350-50

Description

Cartridge valves of type KED allow a free flow from main port 2 to main port 1. In the opposite direction, poppet is held on its seat by the spring force of compression spring and additionally by the system pressure. As main port 3 is pressurized, the sealed pilot spool is shifted to the right. This causes poppet to be pushed from its seat. The spring side of pilot spool is always connected to main port 4. Now, fluid can also flow through the valve from main port 1 to 2. To prevent malfunction, main port 4 (leakage port) must not be blocked.



Characteristic curve



Ordering code

KED 0 R 2 D A / H V *

Check valve,
pilot-to-open

Type of adjustment element

Without adjustment element = 0

Pressure range

350 bar = R

Component size = 2

Further details in clear text

Seal material

FKM seals
(other seals on request)

Attention!
Observe compatibility of seals with
hydraulic fluid used!

H = High Performance and
mounting cavity T-22A

A = Component series

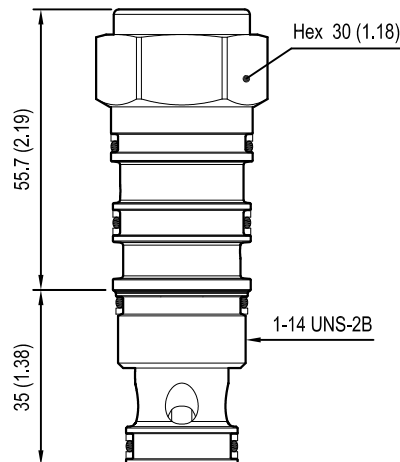
Cracking pressure

D = 2 bar (other cracking pressures on request)

Type	Material number
KED0R2DA/HV	R901098783

Type	Material number

Dimensions



Bosch Rexroth Oil Control S.p.A.

Via Leonardo da Vinci 5
P.O. Box no. 5
41015 Nonantola – Modena, Italy
Tel. +39 059 887 611
Fax +39 059 547 848
compact-hydraulics-cv@boschrexroth.com
www.boschrexroth.com/compacthydraulics

© This document, as well as the data, specifications and other information set forth in it, are the exclusive property of Bosch Rexroth Oil Control S.p.a.. It may not be reproduced or given to third parties without its consent. The data specified above only serve to describe the product. No statements concerning a certain condition or suitability for a certain application can be derived from our information. The information given does not release the user from the obligation of own judgment and verification. It must be remembered that our products are subject to a natural process of wear and aging. Subject to change.