

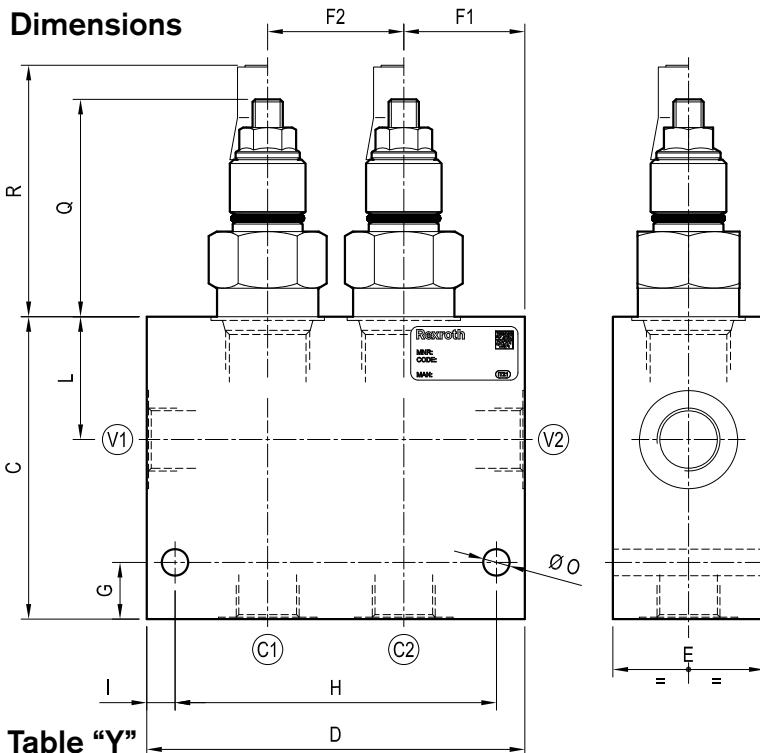
# Dual counterbalance, vented guided poppet type

Double common cavity

Cartridge style in manifold

**VBST-DE-C**

**2Y.04 - K - X - Y - Z - W**



## Technical data

Max flow:	up to 320 l/min	(85 gpm)
Max operating pressure for <b>steel</b> body:	350 bar	(5000 psi)
Max operating pressure for <b>aluminium</b> body:	210 bar	(3000 psi)

To order only manifold see data sheet RE 18325-85

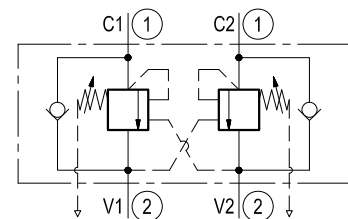
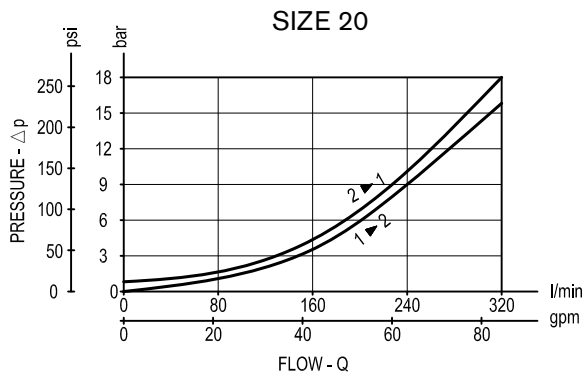
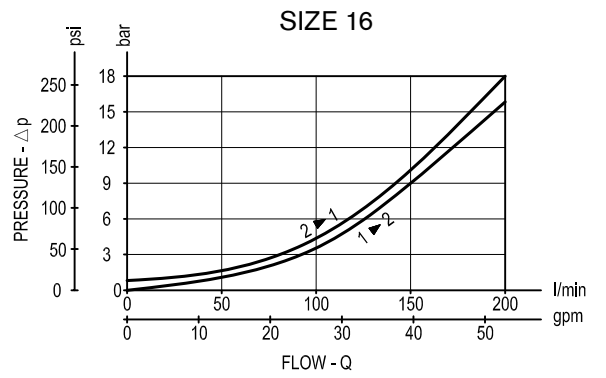
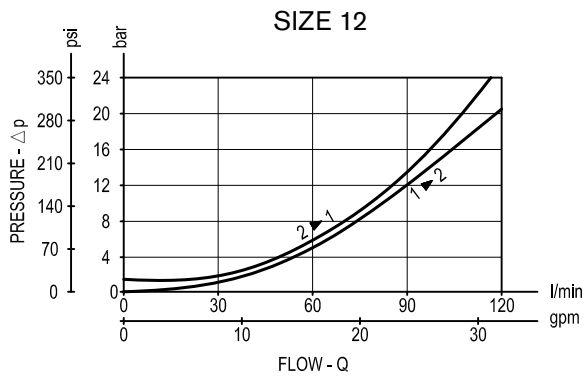
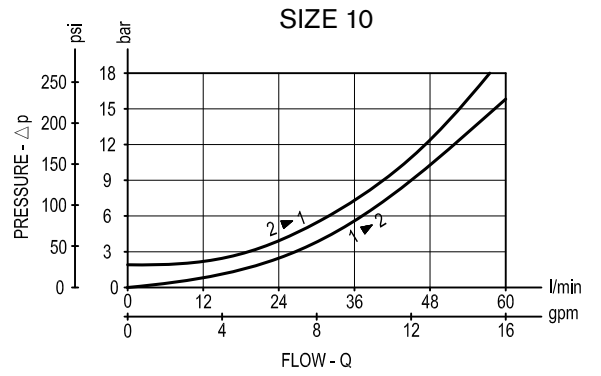
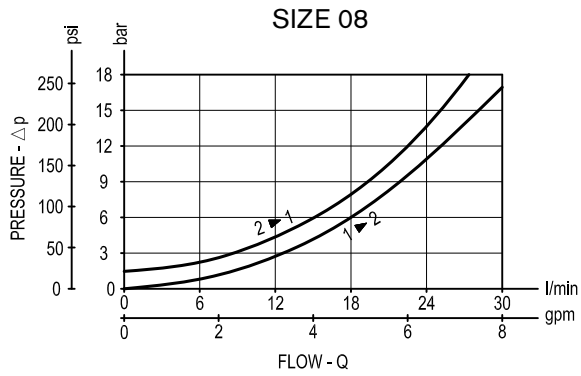


Table "Y"

Cavity	Y	PORT SIZE V1-V2-C1-C2	Max Flow l/min (gpm)	DIMENSIONS mm (Inches)												
				C	D	E	F1	F2	G	H	I	L	M	O	Q	R
SIZE 08	02	G 3/8	30 (8)	60	90	30	27	36	15	75	7.5	27.5		7	55	64
				(2.36)	(3.54)	(1.18)	(1.06)	(1.42)	(0.59)	(2.95)	(0.3)	(1.08)	(0.28)	(2.17)		
SIZE 10	02	G 3/8	60 (16)	80	100	40	32	36	15	85	7.5	32.5		7	53	59
				(3.15)	(3.94)	(1.58)	(1.26)	(1.42)	(0.59)	(3.35)	(0.30)	(1.28)	(0.28)	(2.09)		
SIZE 12	03	G 1/2	120 (32)	80	100	40	32	36	15	85	7.5	32.5		7	61	67
				(3.15)	(3.94)	(1.58)	(1.26)	(1.42)	(0.59)	(3.35)	(0.30)	(1.28)	(0.28)	(2.4)		
SIZE 16	04	G 3/4	200 (53)	90	125	50	40	45	15	105	10	41.5		7	73	80
				(3.54)	(4.92)	(1.97)	(1.58)	(1.77)	(0.59)	(4.13)	(0.39)	(1.63)	(0.28)	(2.87)		
SIZE 20	05	G 1	320 (85)	90	145	50	45	55	22	125	10	38.5		9	65	72.5
				(3.54)	(5.71)	(1.97)	(1.77)	(2.17)	(0.87)	(4.92)	(0.39)	(1.52)	(0.35)	(2.56)		
SIZE 20	06	G 1 1/4	320 (85)	120	175	60	55	65	25	150	12.5	51		11	65	72.5
				(4.72)	(6.89)	(2.36)	(2.17)	(2.56)	(0.98)	(5.91)	(0.49)	(2.01)	(0.43)	(2.56)		



Performance graphs



### Ordering code

2Y.04	K	X	Y	Z	W
<p><b>Manifold with double counterbalance, vented guided poppet type</b></p>					<p><b>Manifold material</b></p> <hr/> <p>= <b>00</b> Aluminium manifold</p> <hr/> <p>= <b>S0</b> Steel manifold</p>
<p><b>Cartridge style</b> - Common cavity (see table K on page 2)</p>					<p><b>Settings</b> - Springs (see table Z on page 2)</p>
<p><b>Cartridge style</b> - Pilot ratio (see table X on page 2)</p>					<p><b>Manifold style</b> - Dimensions and port sizes (see table Y on page 1)</p>

### Preferred types (readily available)

Type	Material number	Type	Material number
2Y0427030520S0	R934001296		
2Y0408030235S0	R934001291		
2Y0416030320S0	R934001292		
2Y0416030335S0	R934001293		
2Y0426030420S0	R934001294		
2Y0426030435S0	R934001295		
2Y0427030535S0	R934001297		
2Y0418030620S0	R934001298		

Further types available by request