

# Dual counterbalance, relief compensated, poppet type

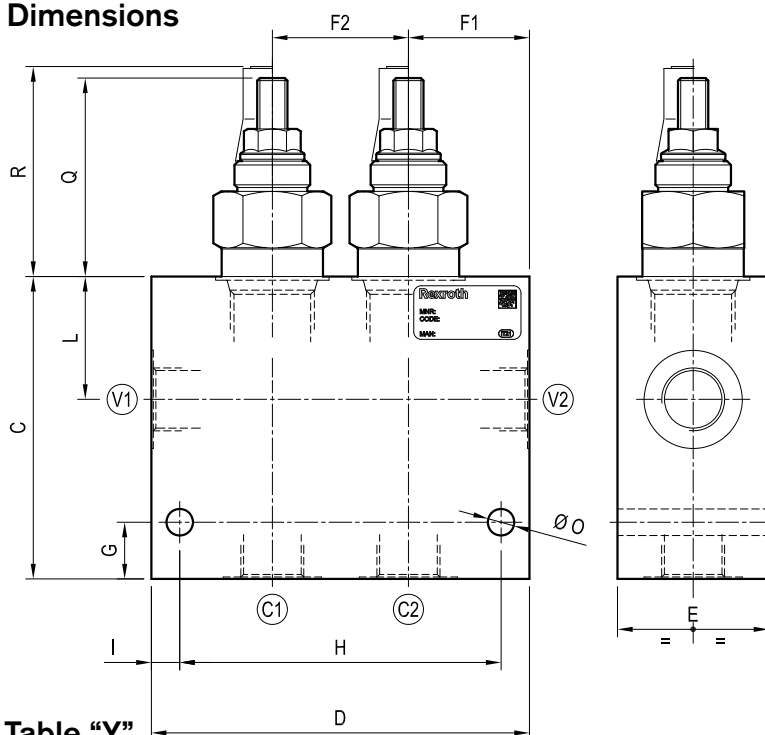
Double common cavity

Cartridge style in manifold

**VBSP-DE-C**

**2Y.03 - K - X - Y - Z - W**

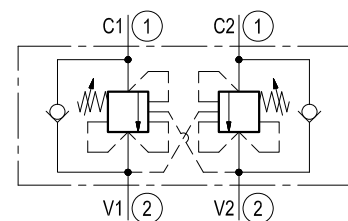
## Dimensions



## Technical data

Max flow:	up to 320 l/min	(85 gpm)
Max operating pressure for <b>steel</b> body:	350 bar	(5000 psi)
Max operating pressure for <b>aluminium</b> body:	210 bar	(3000 psi)

To order only manifold see data sheet RE 18325-85

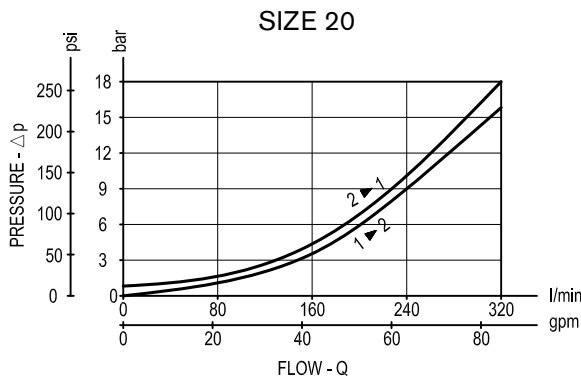
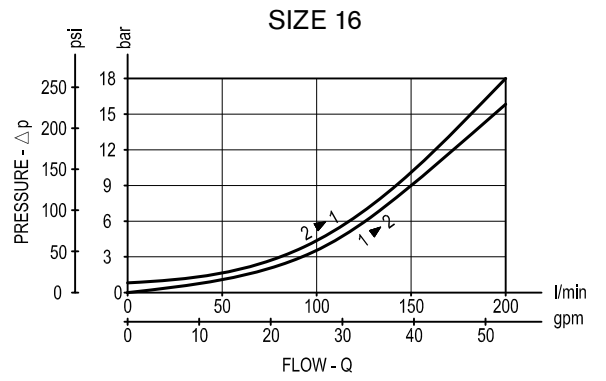
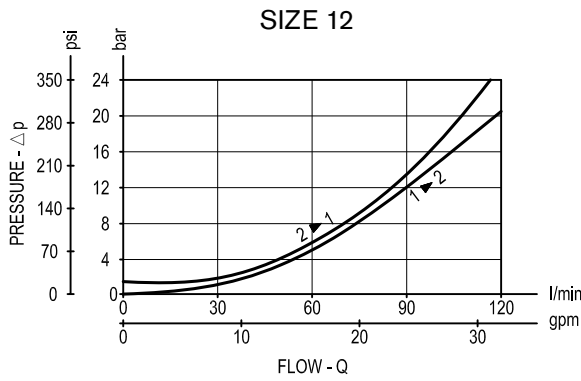
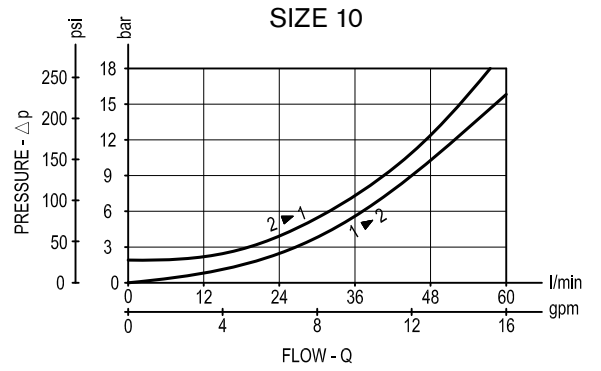
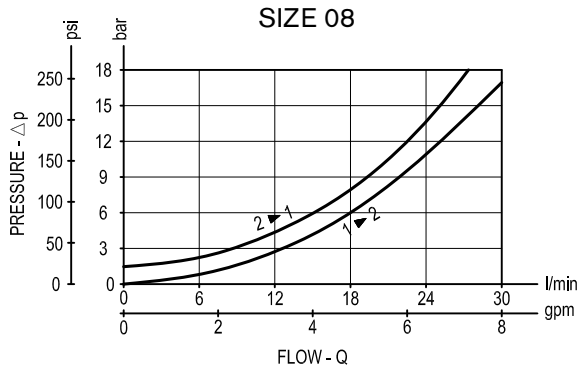


**Table "Y"**

Cavity	Y	PORT SIZE V1-V2-C1-C2	Max Flow l/min (gpm)	DIMENSIONS mm (Inches)												
				C	D	E	F1	F2	G	H	I	L	M	O	Q	R
SIZE 08	02	G 3/8	30 (8)	60 (2.36)	90 (3.54)	30 (1.18)	27 (1.06)	36 (1.42)	15 (0.59)	75 (2.95)	75 (0.3)	275 (1.08)		7 (0.28)	55 (2.17)	64 (2.52)
	03	G 1/2		80 (3.15)	100 (3.94)	40 (1.58)	32 (1.26)	36 (1.42)	15 (0.59)	85 (3.35)	75 (0.30)	32.5 (1.28)		7 (0.28)	53 (2.09)	59 (2.32)
SIZE 12	03	G 1/2	120 (32)	90 (3.54)	125 (4.92)	50 (1.97)	40 (1.58)	45 (1.77)	15 (0.59)	105 (4.13)	10 (0.39)	41.5 (1.63)		7 (0.28)	61 (2.4)	67 (2.64)
	04	G 3/4		90 (3.54)	125 (4.92)	50 (1.97)	40 (1.58)	45 (1.77)	15 (0.59)	105 (4.13)	10 (0.39)	41.5 (1.63)		7 (0.28)	61 (2.4)	67 (2.64)
SIZE 16	05	G 1	200 (53)	90 (3.54)	145 (5.71)	50 (1.97)	45 (1.77)	55 (2.17)	22 (0.87)	125 (4.92)	10 (0.39)	38.5 (1.52)		9 (0.35)	73 (2.87)	80 (3.15)
	06	G 1 1/4		120 (4.72)	175 (6.89)	60 (2.36)	55 (2.17)	65 (2.56)	25 (0.98)	150 (5.91)	12.5 (0.49)	51 (2.01)		11 (0.43)	65 (2.56)	72.5 (2.85)



Performance graphs



## Ordering code

<b>2Y.03</b>	<b>K</b>	<b>X</b>	<b>Y</b>	<b>Z</b>	<b>W</b>
--------------	----------	----------	----------	----------	----------

**Manifold with dual counterbalance, relief compensated, poppet type**

**Cartridge style** - Common cavity  
(see table K on page 2)

**Cartridge style** - Pilot ratio  
(see table X on page 2)

### Manifold material

<b>= 00</b>	Aluminium manifold
<b>= S0</b>	Steel manifold

**Settings** - Springs  
(see table Z on page 2)

**Manifold style** - Dimensions and port sizes  
(see table Y on page 1)

## Preferred types (readily available)

Type	Material number
2Y030803032000	R934003938
2Y0304030220S0	R934001325
2Y0309030320S0	R934001328
2Y0308030420S0	R934001332
2Y0308030435S0	R934001333
2Y0310030520S0	R934001335
2Y0310030535S0	R934001336
2Y0313030620S0	R934001344
2Y0313030635S0	R934001346

Type	Material number

Further types available by request