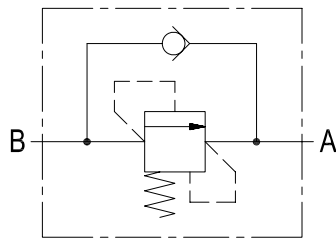
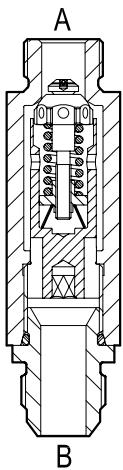


Sequence valves

JIC series direct acting poppet type

VSQ-60-LM

0T.S1.03.00.03-Z-W



Description

They are composed by a relief valve (opening "B-A") and by a reverse flow check valve "A-B". Initially the flow goes to a first line connected in parallel to the B side, not shown here, and pressure increases until reaching the selected relief setting; then the relief valve opens and the second circuit is supplied out of A port, while the actuator connected to the B side remains pressurized. The incorporated check valve allows the reverse motion of the actuators which happens without specific control of the sequence, only depending from the load/pressure conditions. Note that pressure at A needed to operate the second actuator is additive to the relief setting, and, for this reason, this valve is successfully employed to energize a secondary actuator which only requires low pressure.

Technical data

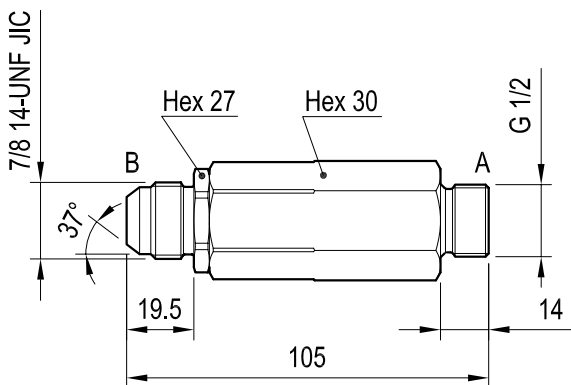
Pressure P max bar (psi)	Flow Q max l/min (gpm)	Weight kg (lbs)
350 (5000)	60 (16)	0.37 (0.82)

Steel body, zinc plated

Advantages

- Very compact design and inline mounting for space saving.
- Mounting position is unrestricted.
- Different springs available for different pressure ranges (see the "Z" , table).

Dimensions



Springs	
Z	Adj. press. range bar (psi)
05	20-100 (290-1450)
10	110-170 (1595-2465)
20	180-230 (2610-3335)
35	240-350 (3480-5075)

The valve is supplied with the relief setting requested by the customer and is non-adjustable. Refer to the table. Standard pressure setting are specified in the relevant "W" table. For special pressure setting, consult us.

Std. SETTING bar (psi) Q= 5 l/m				
W	Z=05	Z=10	Z=20	Z=35
01	20 (290)	110 (1595)	180 (2610)	240 (3480)
02	30 (435)	120 (1740)	190 (2755)	250 (3625)
03	40 (580)	130 (1885)	200 (2900)	260 (3770)
04	50 (725)	140 (2030)	210 (3045)	270 (3915)
05	60 (870)	150 (2175)	220 (3190)	280 (4060)
06	70 (1015)	160 (2320)	230 (3335)	290 (4205)
07	80 (1160)	170 (2465)		300 (4350)
08	90 (1305)			310 (4495)
09	100 (1450)			320 (4640)

Applications

They are employed to control the sequence of two or more cylinders or motors, when the second actuator must be allowed to move only after the first actuator has performed a certain function. The incorporated check valve allows free reverse motion without specific control of the sequence.

Ordering code

OT.S1.03.00.03	Z	W
-----------------------	----------	----------

Std. Setting see table "W"

Jic series direct acting poppet type

Springs see table "Z"

Type	Material number	Type	Material number	Type	Material number
OTS10300030501	R931001994	OTS10300031004	R931002012	OTS10300033503	R931002025
OTS10300030502	R931001995	OTS10300031005	R931002013	OTS10300033504	R931002026
OTS10300030503	R931001996	OTS10300031006	R931002014	OTS10300033505	R931002027
OTS10300030504	R931001997	OTS10300031007	R931002015	OTS10300033506	R931002028
OTS10300030505	R931000099	OTS10300032001	R931002016	OTS10300033507	R931002029
OTS10300030506	R931001998	OTS10300032002	R931002017	OTS10300033508	R931002030
OTS10300030507	R931002000	OTS10300032003	R931002018	OTS10300033509	R931002031
OTS10300030508	R931002004	OTS10300032004	R931002019		
OTS10300030509	R931002005	OTS10300032005	R931002020		
OTS10300031001	R931002009	OTS10300032006	R931002021		
OTS10300031002	R931002010	OTS10300033501	R931002022		
OTS10300031003	R931002011	OTS10300033502	R931002024		