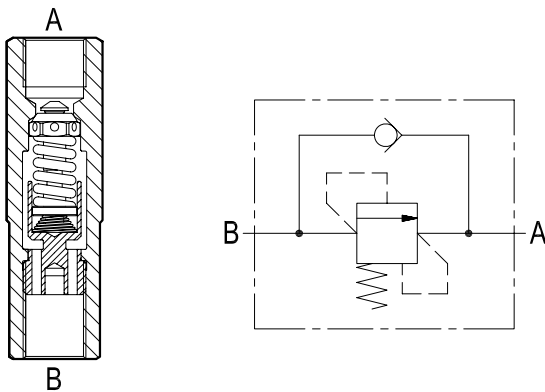
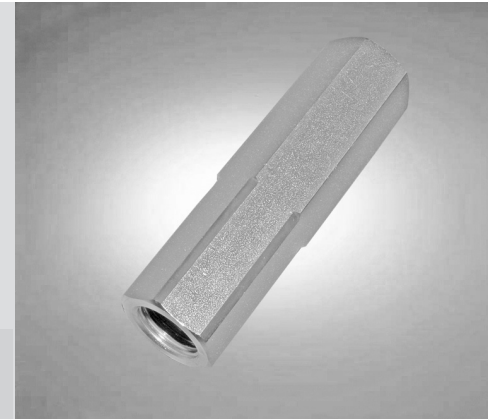


## Sequence valves Direct acting poppet type

VSQ-20-LM (G3/8)

OT.S1.01.00.02-Z-W



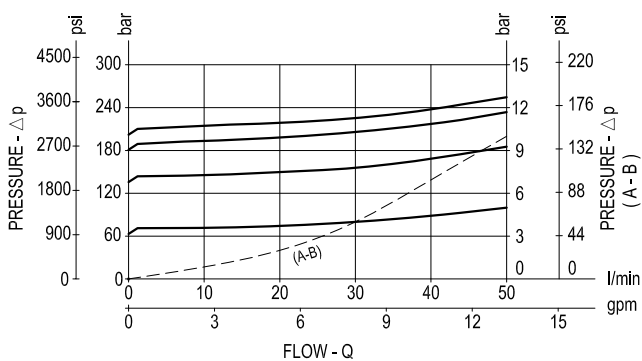
### Description

They are composed by a relief valve (opening "B-A") and by a reverse flow check valve "A-B".

Initially the flow goes to a first line connected in parallel to the B side, not shown here, and pressure increases until reaching the selected relief setting; then the relief valve opens and the second circuit is supplied out of A port, while the actuator connected to the B side remains pressurized. The incorporated check valve allows the reverse motion of the actuators which happens without specific control of the sequence, only depending from the load/pressure conditions.

Note that pressure at A needed to operate the second actuator is additive to the relief setting, and, for this reason, this valve is successfully employed to energize a secondary actuator which only requires low pressure.

### Performance



### Advantages

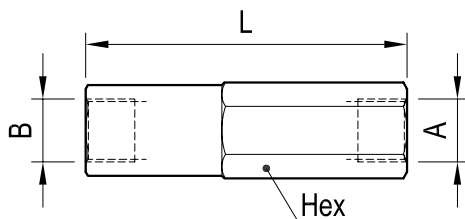
- Very compact design and inline mounting for space saving.
- Mounting position is unrestricted.
- Low  $\Delta p$  for B-A flow.
- Different springs available for different pressure ranges ( see the "Z" table).

### Technical data

Pressure P max bar (psi)	Flow Q max l/min (gpm)	Weight kg (lbs)
350 (5000)	50 (13)	0.18 (0.40)

Steel body, zinc plated

## Dimensions



## Ports size / Dimensions

Ports A-B	L mm (inches)	Hex mm (inches)
G 3/8	85 (3.35)	22 (0.87)

Springs	
Z	Adj. press. range bar (psi)
05	20-70 (290-1015)
10	80-130 (1160-1885)
20	140-200 (2030-2900)
35	210-350 (3045-5075)

The valve is supplied with Factory set opening pressure and is non-adjustable. Refer to the table. Standard pressure setting are specified in the relevant "W" table. For special pressure settings, consult us.

Std. SETTING bar (psi) Q= 5 l/m				
W	Z=05	Z=10	Z=20	Z=35
01		80 (1160)	140 (2030)	210 (3045)
02	20 (290)	90 (1305)	150 (2175)	220 (3190)
03	30 (435)	100 (1450)	160 (2320)	230 (3335)
04	40 (580)	110 (1595)	170 (2465)	240 (3480)
05	50 (725)	120 (1740)	180 (2610)	250 (3625)
06	60 (870)	130 (1885)	190 (2755)	260 (3770)
07	70 (1015)		200(2900)	270 (3915)

## Applications

They are employed to control the sequence of two or more cylinders or motors, when the second actuator must be allowed to move only after the first actuator has performed a certain function. The incorporated check valve allows free reverse motion without specific control of the sequence.

## Ordering code

OT.S1.01.00.02	Z	W
----------------	---	---

Direct acting poppet type

Std. setting see table "W"

Springs see table "Z"

Type	Material number
OTS101000205020	R931000074
OTS101000205030	R931000075
OTS101000205040	R931000076
OTS101000205050	R931000077
OTS101000205060	R931000078
OTS101000205070	R931000079
OTS101000210010	R931000083
OTS101000210020	R931000084
OTS101000210030	R931000085
OTS101000210040	R931001978

Type	Material number
OTS101000210050	R931000086
OTS101000210060	R931001980
OTS101000220010	R931000088
OTS101000220020	R931001981
OTS101000220030	R931000657
OTS101000220040	R931001982
OTS101000220050	R931000089
OTS101000220060	R931001983
OTS101000220070	R931001862
OTS101000235010	R931001985

Type	Material number
OTS101000235020	R931000656
OTS101000235030	R931001988
OTS101000235040	R931001990
OTS101000235050	R931001991
OTS101000235060	R931001992
OTS101000235070	R931001993