

Logic element, pressure compensator  
combination type  
Common cavity, Size 10

VCSQ-10A

04.84.06 - X - 85 - Z

**RE 18321-80**

Edition: 03.2016

Replaces: 01.2010



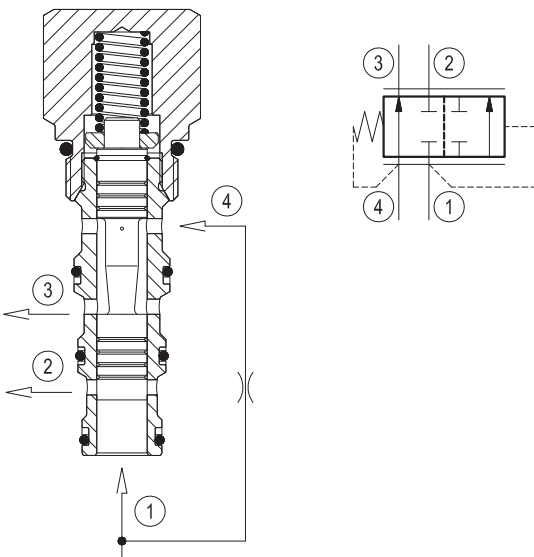
**Technical data**

Max. operating pressure	350 bar (5000 psi)
Max. inlet flow	60 l/min. (16 gpm)
Max. priority flow	40 l/min. (11 gpm)
Flow maintenance	± 10%
Fluid temperature range	-30 to 100 °C (-22 to 212 °F)
Installation torque	41 - 47 Nm (30 - 35 ft-lbs)
Weight	0.14 kg (0.31 lbs)
Cavity	CA-10A-4N (see data sheet 18325-70)
Lines bodies and standard assemblies	Please refer to section "Hydraulic integrated circuit" or consult factory
Seal kit <sup>1)</sup>	Code: RG10A4010530100 material no: R901111373
Fluids	Mineral-based or synthetics with lubricating properties at viscosities of 10 to 500 mm <sup>2</sup> /s (cSt)
Recommended degree of fluid contamination	Nominal value max. 10µm (NAS 8) / ISO 4406 19/17/14
Installation	No restrictions
Other Technical Data	See data sheet 18350-50

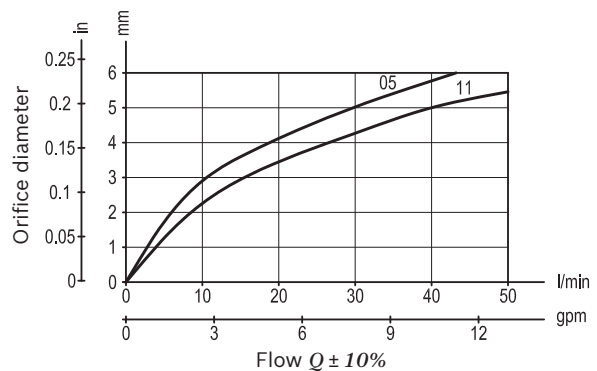
**Description**

Flow is normally allowed from 4 to 3. When pilot pressure at 1 rises above the combined pressure of the spring bias, plus pressure at 4, the valve shifts to block flow between 3 and 4, while diverting flow from 1 to 2. A constant pressure drop is maintained across a fixed (or variable) orifice upstream of 4 when installed and piloted per the diagram above. In this case, flow priority is given to 3, with flow in excess of the orifice differential requirement being by-passed to 2.

1) Only external seals for 10 valves



**Characteristic curve**



**Ordering code**

<b>04.84.06</b>	<b>X</b>	<b>85</b>	<b>Z</b>	<b>00</b>	<b>*</b>
-----------------	----------	-----------	----------	-----------	----------

Logic element, pressure compensator combination type

Adjustments  
**00** Fixed setting

**85** Common cavity, Size 10

Series 0/A to L  
 unchanged performances and dimensions

Version and options standard

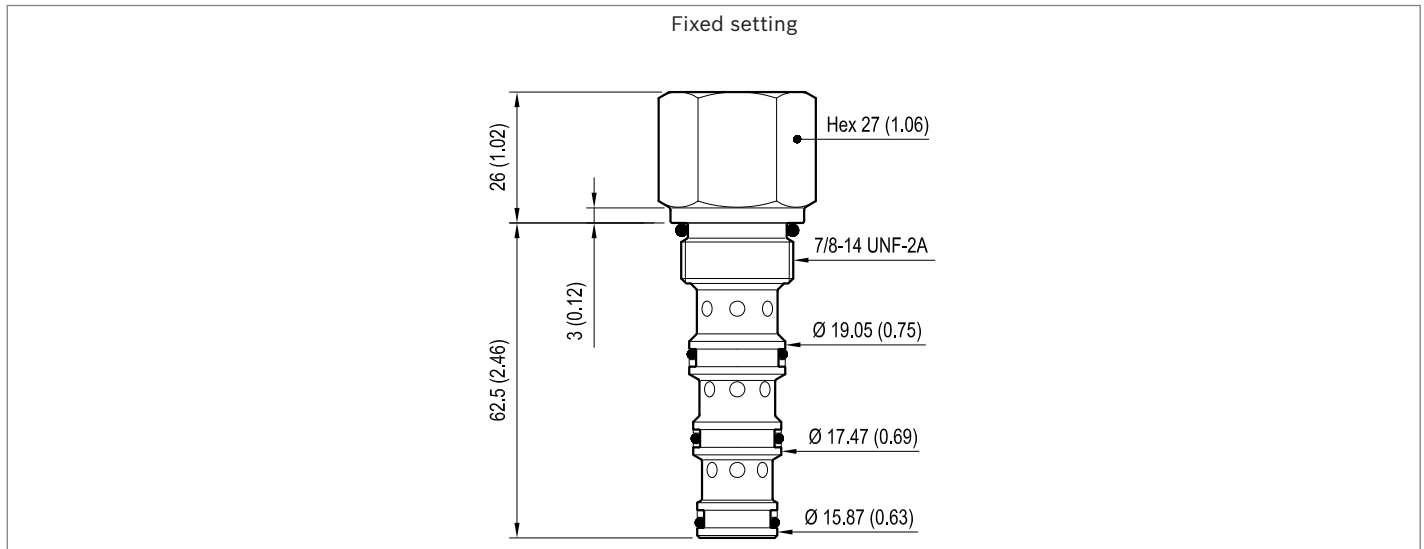
SPRINGS	
	Bias spring bar (psi)
<b>05</b>	5.5 (80) ± 20%
<b>11</b>	11.5 (167) ± 15%

**Preferred types**

Type	Material number
048406008505000	R901109385
048406008511000	R901109386

Type	Material number

**Dimensions**



**Bosch Rexroth Oil Control S.p.A.**

Via Leonardo da Vinci 5  
 P.O. Box no. 5  
 41015 Nonantola – Modena, Italy  
 Tel. +39 059 887 611  
 Fax +39 059 547 848  
 compact-hydraulics-cv@boschrexroth.com  
 www.boschrexroth.com/compacthydraulics

© This document, as well as the data, specifications and other information set forth in it, are the exclusive property of Bosch Rexroth Oil Control S.p.a.. It may not be reproduced or given to third parties without its consent. The data specified above only serve to describe the product. No statements concerning a certain condition or suitability for a certain application can be derived from our information. The information given does not release the user from the obligation of own judgment and verification. It must be remembered that our products are subject to a natural process of wear and aging. Subject to change.