

IoT Gateway

Quick Start Guide

R911378848
Edition 05



This quick start guide describes the initial commissioning of the IoT Gateway.

1 Prerequisites for the initial commissioning

- ▶ Mounted control cabinet PC (PR21) with voltage supply
- ▶ PC with an account with administrator rights
- ▶ Network cable
- ▶ License key (provided upon delivery)



The IoT Gateway runs two hours in the evaluation mode without license key. Restart the IoT Gateway.

- ▶ Internet access to access the Bosch Rexroth product catalog.
- ▶ Web browser

2 IP addresses upon delivery

Plugs	IP address	Subnet mask	Note
XF5	DHCP	DHCP	-
XF6	192.168.0.1	255.255.255.0	Opening the IoT Gateway web interface https://192.168.0.1:8888 .

To change the IP address of the control cabinet PC (PR21), refer to chapter 5 or to chapter 6.3 in the project planning R911384733).

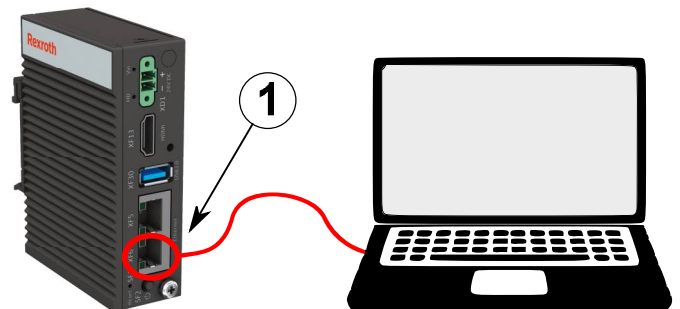
3 Setting up the IoT Gateway

Establishing a connection to the IoT Gateway

1. Connect your PC to the Ethernet port (XF6) of the IoT Gateway. Use the network cable.



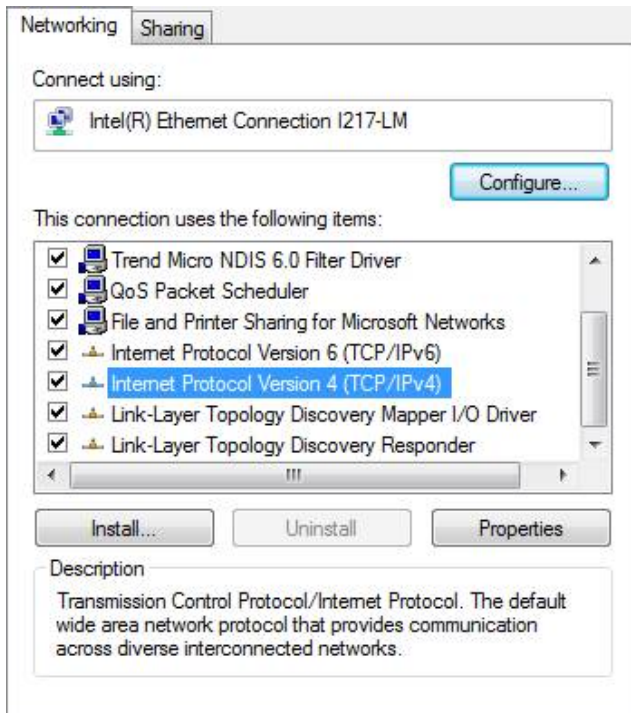
- ▶ The IP address assigned to the PC and the one of the IoT Gateway have to be in the same address space.
- ▶ Administrator rights are required to modify the IP address of the PC under Microsoft Windows.



Network connection to the control

Preparing the PC for the network configuration

1. Open the "Settings" on your PC.
2. Select "Network and Internet".
3. Select "Change adapter options".
4. Open the network adapter used.
5. Select "Properties".
6. Open the "Network" tab.
7. Select "Internet Protocol Version 4".
8. Select "Properties".



Selecting Internet protocol

9. Note down the current settings.

This data is changed in the next step. After the IoT Gateway has been configured successfully, the settings can be reset.

10. Select "Use the following IP address".

11. Enter the following address data. "X" is a digit higher than 1.

Entering an IP address

12. Apply the settings with "OK".

Opening the IoT Gateway web interface

<https://192.168.0.1:8888>

A message might be displayed in your web browser informing on an unsecure connection.

Confirm this message with "Yes, continue without further secure connection".

If you cannot open the IoT Gateway web interface, check the proxy settings of your PC. Modify the settings or disable the proxy server.

2. Log in.

User name: admin

Password: admin

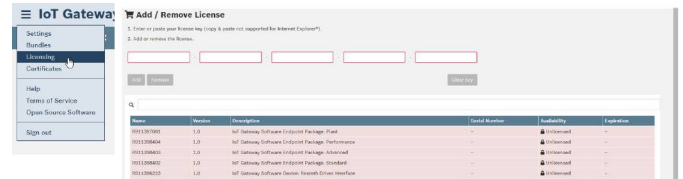
3. Change the preset login data in the following dialog.

The initial commissioning is now completed.

For detailed information, refer to the IoT Gateway web interface in the "Help" menu.

4 Licensing

Go to the menu item "Licensing" to add and remove the license keys for different IoT Gateway features. This overview lists the available features and whether they are currently enabled.



Opening "Licensing"

5 Changing the IP address of the IoT Gateway

The networks are configured as follows upon delivery:

XF5	XF6
DHCP	IP: 192.168.0.1

Network configuration XF5 and XF6


Use the netplan file `/etc/netplan/00-snapd-config.yaml` to configure the network.

For the network configuration listed in the table, the file content of the netplan file is as follows, exemplarily shown for the DHCP and fixed IP addressing:

```
network:
  version: 2
  ethernets:
    eth0:
      addresses: []
      dhcp4: true
    eth1:
      addresses: [192.168.0.1/24]
      nameservers:
        addresses: [1.1.1.1]
```

Netplan file of the PR21, Ubuntu Core standard

Use the editor "vi" to change the network configuration files. Open `sudo vi /etc/netplan/00-snapd-config.yaml` to edit the file.

Bosch Rexroth AG
Bgm.-Dr.-Nebel-Str. 2
97816 Lohr a.Main, Germany


www.boschrexroth.com/electrics



Copyright

© Bosch Rexroth AG 2020

This document, as well as the data, specifications and other information set forth in it, are the exclusive property of Bosch Rexroth AG. It may not be reproduced or given to third parties without its consent.

Development Automation Systems Control Hardware StHö (MaKo/MePe)